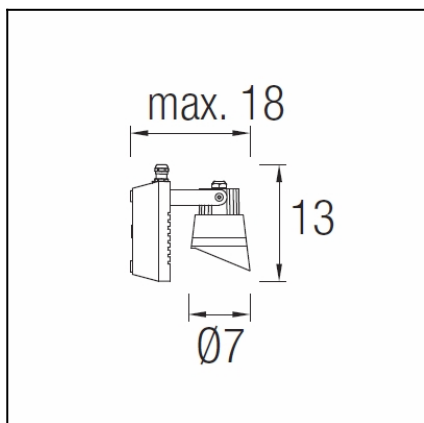


Design by Francesc Vilaró



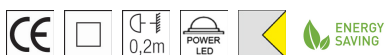
The photograph may not match the reference exactly. Please read the product description to identify the finish.



Download photometric file .ldt / .ies

TECHNICAL CHARACTERISTICS

| | |
|---|-------------------------------------|
| Type: | Spotlight |
| Adjustable $\pm 90^\circ$ on the horizontal axis. | |
| Adjustable 360° on the vertical axis. | |
| IP Protection degrees: | IP65 |
| IK Protection degrees: | IK06 |
| Bulb: | 3 x LED Cree. Neutral white - 4000K |
| Power (W): | 6.5W |
| Total power consumption (W): | 9.2 |
| Luminous efficacy (Lm/W): | 103 |
| CRI: | 75 |
| Angle of the optics/Reflector: | 40° |
| Voltage / Frequency: | 100-240V/50-60Hz |
| Warranty (Years): | 2 |
| Option to extend the guarantee: | Yes, 5 years |
| Units per box: | 6 |
| Net Weight (Kg): | 0.535 |
| EAN: | 8435381404574 |



MATERIALS / FINISHES

Structure material: High purity aluminium
Polycarbonate

Diffuser material: Glass

Structure finish: Urban grey
Urban grey

Diffuser finish: Transparent

GEAR

Multi-voltage electronic gear included (110-240 V / 50-60 Hz)

Report No.: 20130307002

Test Time: 2013-3-7 14:17

Luminaire Property

Luminaire Manufacturer: LEDS-C4
Luminaire Category:
Lamp Catalog:
Number of Lamps: 3
Luminous Length (mm): 33
Luminous Height (mm): 10
Current: 0.080 A
Power Factor: 0.457

Luminaire Description: 05-9647
Lamp Description: LED
Lumens per Lamp: 162
Luminous Width (mm): 33
Voltage: 220.0 V
Power: 8.10 W

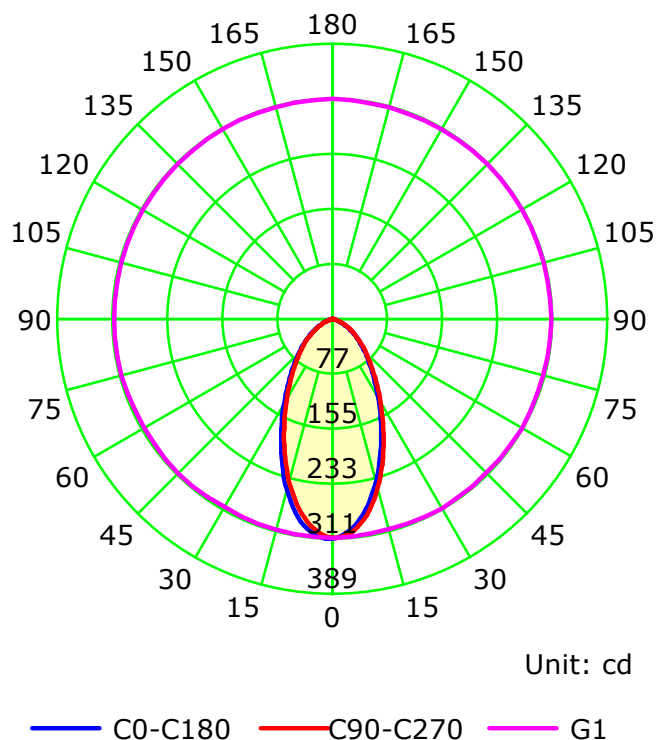
Photometric Results

CIE Class: Direct
Measurement Flux: 344 lm
Downward Ratio: 70.77%
Horizontal Diffuse Angle(10%,50%): H116.2,H53.4
Vertical Diffuse Angle(10%,50%): V115.9,V53.3
Luminaire Efficacy Rating (LER): 42
Max. Intensity: 311.99 cd

Total Rated Lamp Lumens: 486.0 lm
Efficiency: 70.77%
Upward Ratio: 0.00%
Central Intensity: 311.63 cd
Pos of Max. Intensity: H180 V1

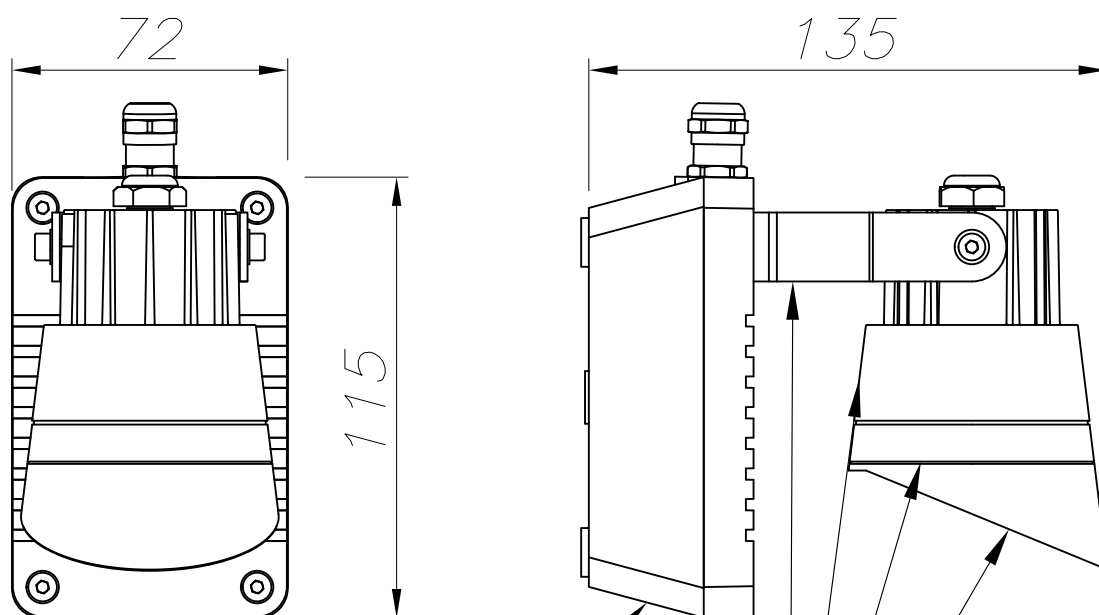
Picture Of Luminaire

Luminous Intensity Distribution Curve



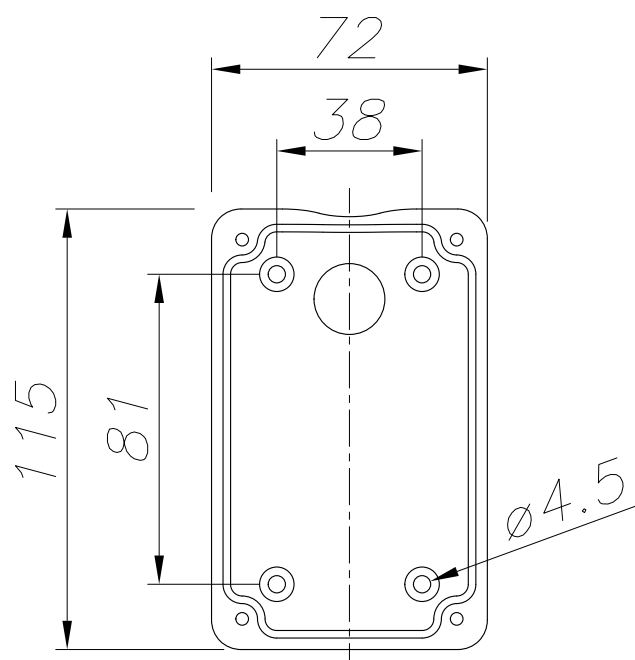
C Plane (°):0.0-360.0: 15.0
Test Lab:
Test Type: TYPE C
Temperature:
Operator:

Gamma Plane (°):0.0-90.0:1.0
Test Device: GPM-1800B
Distance: 3.150 m
Humidity:
Inspector:



POLICARBONATO PINTADO
PAINTED POLYCARBONATE

ALUMINIO DE ALTA PUREZA
HIGH QUALITY ALUMINIUM



PLANTILLA DE INSTALACIÓN
INSTALLATION TEMPLATE

