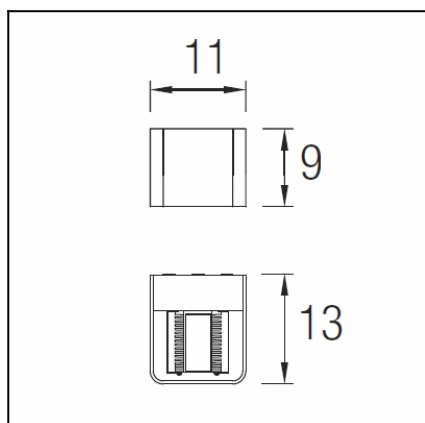


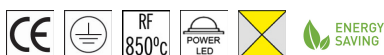
The photograph may not match the reference exactly. Please read the product description to identify the finish.



Download photometric file .ldt /.ies

TECHNICAL CHARACTERISTICS

Type:	Wall fixture
IP Protection degrees:	IP65
IK Protection degrees:	IK08
Bulb:	6 x LED Cree. Warm White - 3000K
Power (W):	6
Total power consumption (W):	8.2
Luminous efficacy (Lm/W):	91
CRI:	80
Voltage / Frequency:	100-240V/50-60Hz
Warranty (Years):	2
Option to extend the guarantee:	Yes, 5 years
Units per box:	4
Net Weight (Kg):	0.98
EAN:	8435381400392



MATERIALS / FINISHES

Structure material:	High purity aluminium	Diffuser material:	Glass
Structure finish:	Urban grey	Diffuser finish:	Matt

GEAR

Multi-voltage electronic gear included (110-240 V / 50-60 Hz)

Report No.: 20130314006

Test Time: 2013-3-15 09:41

Luminaire Property

Luminaire Manufacturer: LEDS-C4
Luminaire Category:
Lamp Catalog:
Number of Lamps: 6
Luminous Length (mm): 100
Luminous Height (mm): 35
Current: 0.076 A
Power Factor: 0.492

Luminaire Description: 05-9683
Lamp Description: LED
Lumens per Lamp: 100
Luminous Width (mm): 80
Voltage: 220.5 V
Power: 8.30 W

Photometric Results

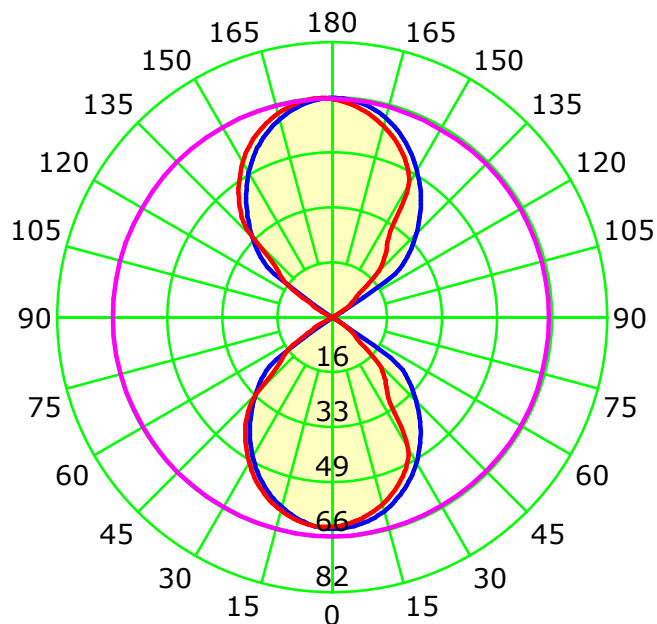
CIE Class: General Diffuse
Measurement Flux: 225 lm
Downward Ratio: 18.43%
Field Angle: H112.1 V113.4
Luminaire Efficacy Rating (LER): 27
Max. Intensity: 66.13 cd

Total Rated Lamp Lumens: 600.0 lm
Efficiency: 37.51%
Upward Ratio: 19.07%
Beam Angle: H92.4 V78.3
Central Intensity: 63.56 cd
Pos of Max. Intensity: H240 V177

Picture Of Luminaire ...



Luminous Intensity Distribution Curve

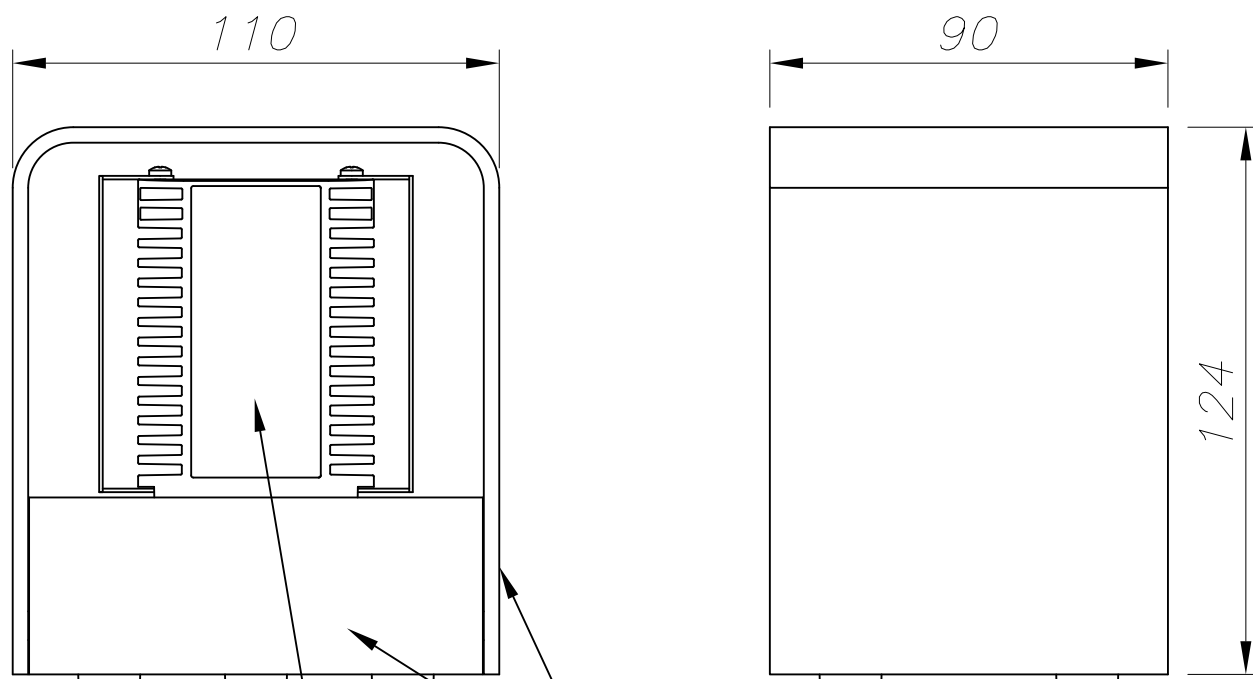


Unit: cd

— C0-C180 — C90-C270 — G177

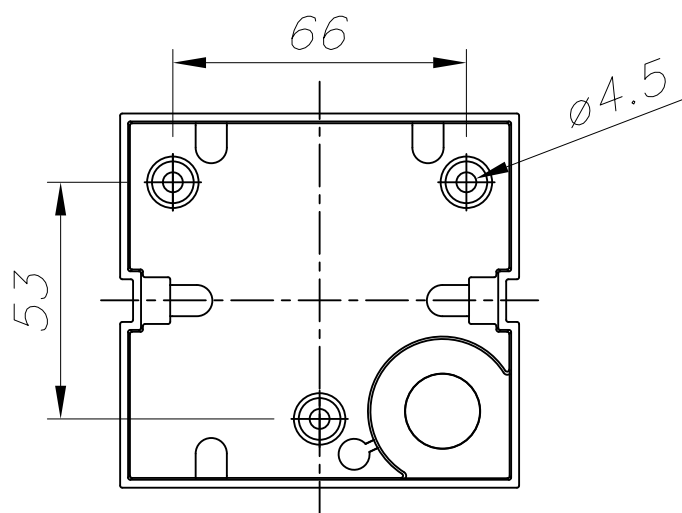
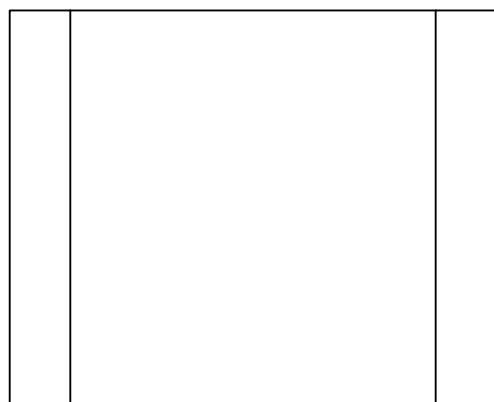
C Plane (°):0.0-360.0: 30.0
Test Lab: INVENTFINE
Test Type: TYPE C
Temperature:
Operator:

Gamma Plane (°):0.0-180.0:1.0
Test Device: GPM-1800B
Distance: 6.435 m
Humidity:
Inspector:



CRISTAL ARENADO INTERIOR
SANDFROSTED GLASS INSIDE

ALUMINIO DE ALTA PUREZA
HIGH QUALITY ALUMINIUM



PLANTILLA DE INSTALACIÓN
INSTALLATION TEMPLATE

