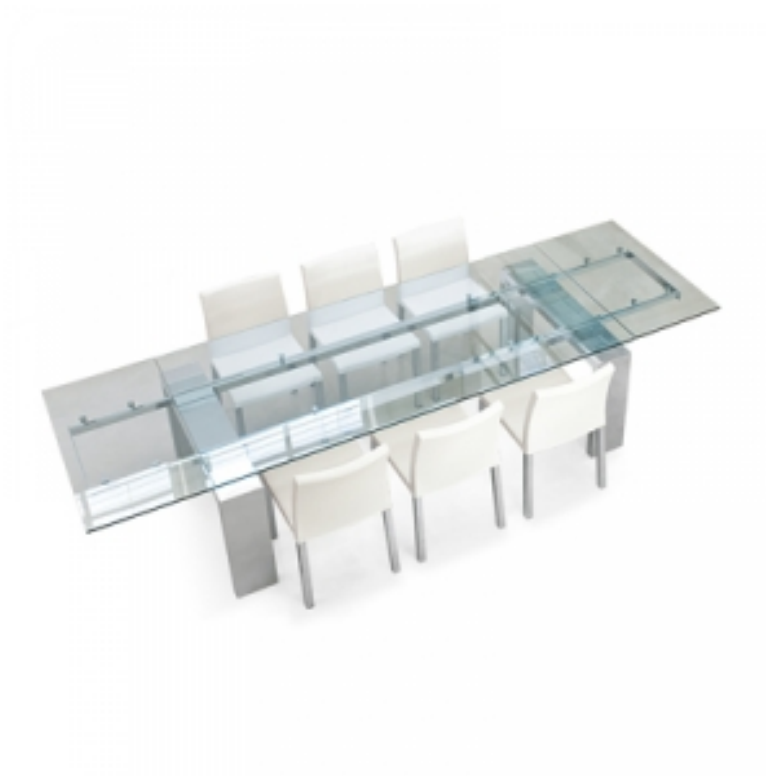


## TOM

design Peter Ross



A metropolitan and dynamic look, which feels perfectly at ease in settings of the most varied styling concepts. Tom is an extending table with polished stainless steel legs and a table top in transparent or smoked black glass, or white painted extra light glass. The two side extensions are independent and significantly increase the support surface while retaining maximum stability and solidity.

TOP/EXTENSIONS:  
transparent glass  
smoked black glass  
white painted extra-light glass

LEGS:  
glossy stainless steel

