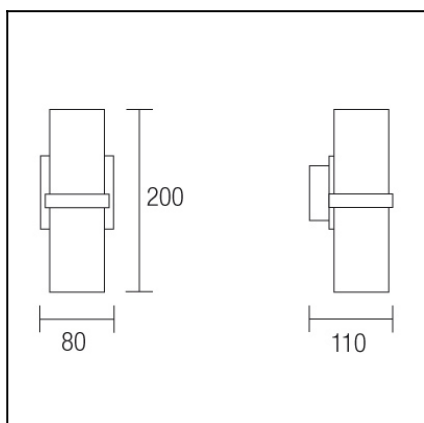




The photograph may not match the reference exactly. Please read the product description to identify the finish.



### TECHNICAL CHARACTERISTICS

|                              |                  |
|------------------------------|------------------|
| Type:                        | Wall fixture     |
| IP Protection degrees:       | IP20             |
| Lampholder:                  | 2 x G9           |
| Power (W):                   | G9 MAX 60W       |
| Bulb included:               | 2 x G9 MAX 60W   |
| Total power consumption (W): | 120              |
| Voltage / Frequency:         | 220-240V/50-60Hz |
| Warranty (Years):            | 2                |
| Units per box:               | 4                |
| Net Weight (Kg):             | 0.49             |
| EAN:                         | 8435111045961,00 |



### MATERIALS / FINISHES

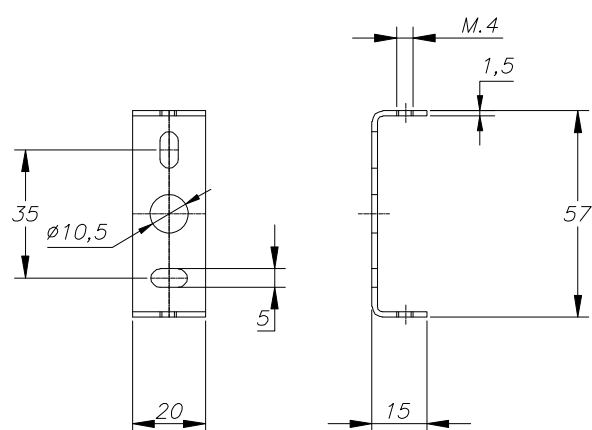
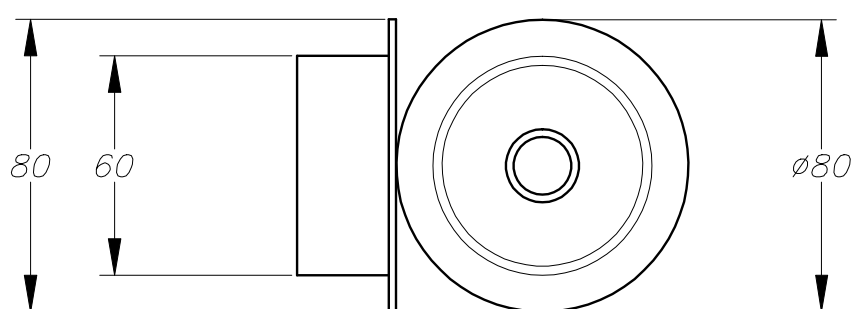
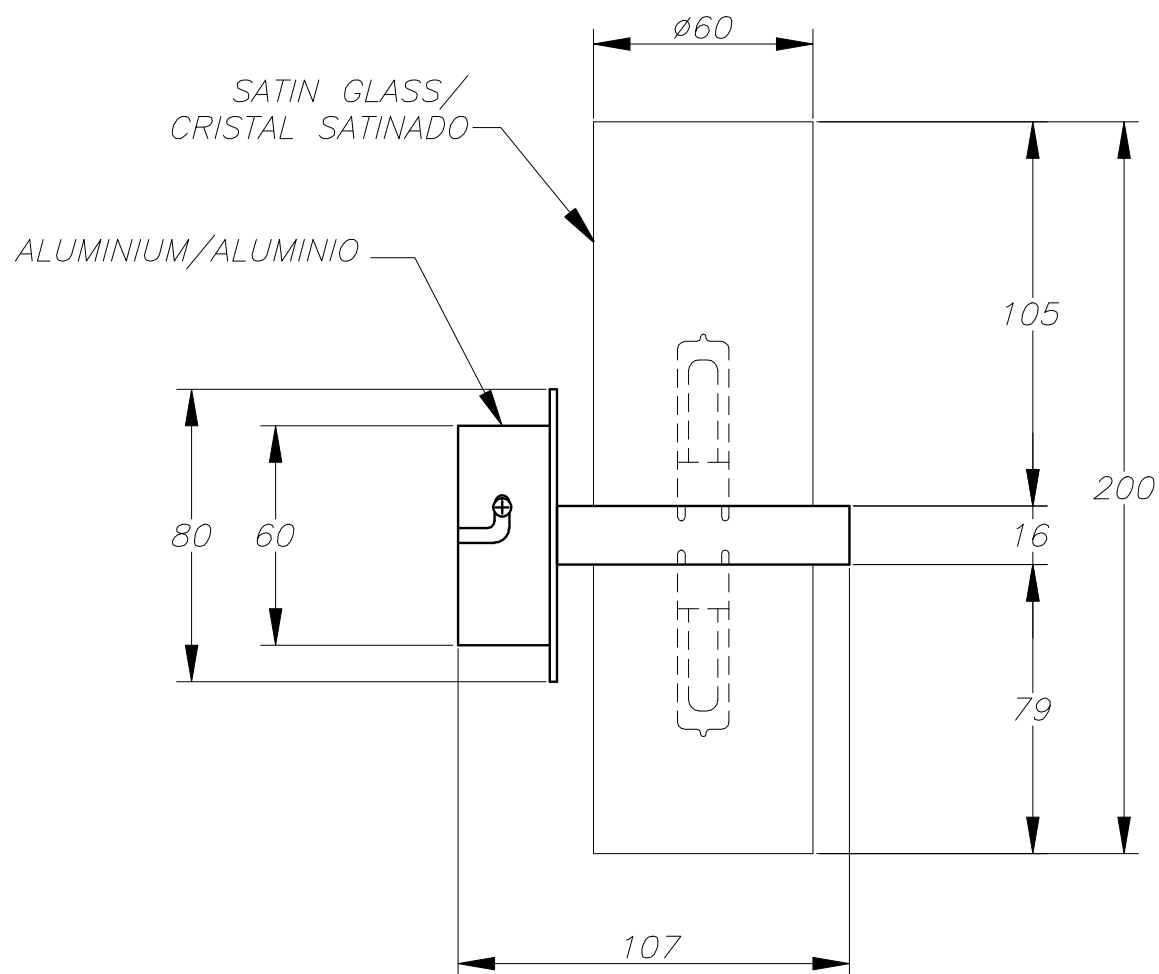
**Structure material:** Satin aluminium

**Structure finish:** Polished

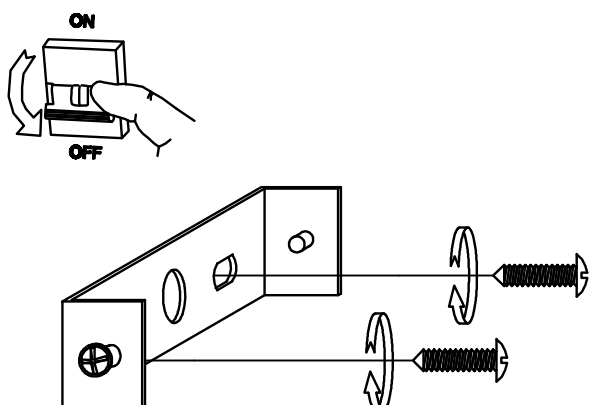
**Diffuser material:** Glass

**Diffuser finish:** Satin

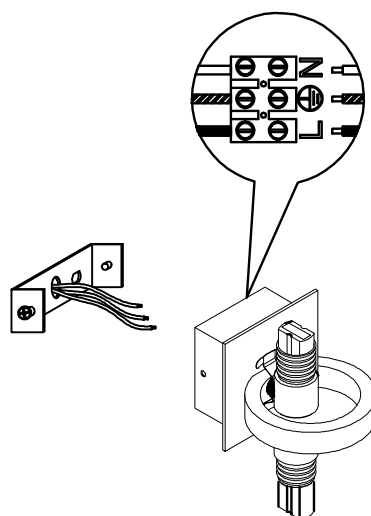
Download photometric file .ldt /.ies



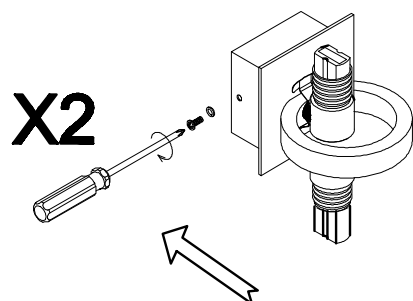
**1**



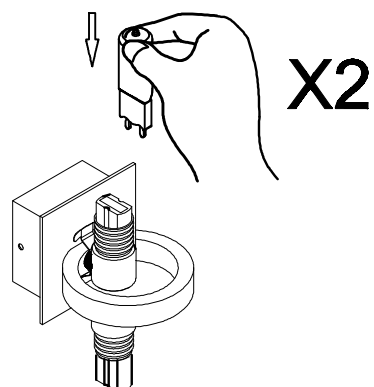
**2**



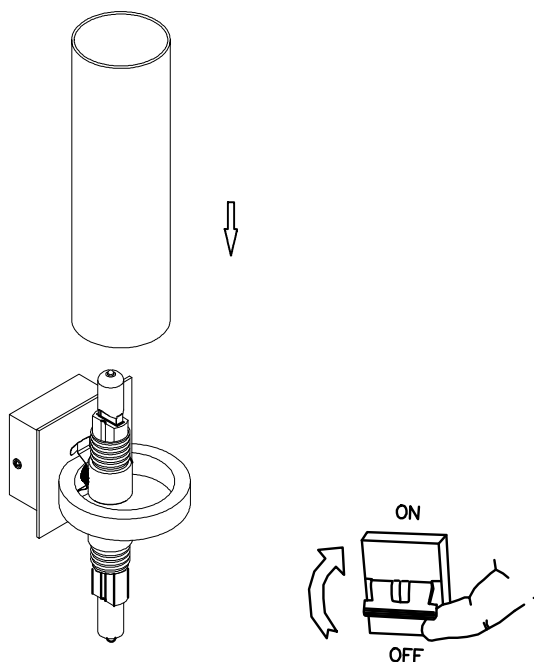
**3**



**4**



**5**



**6**

