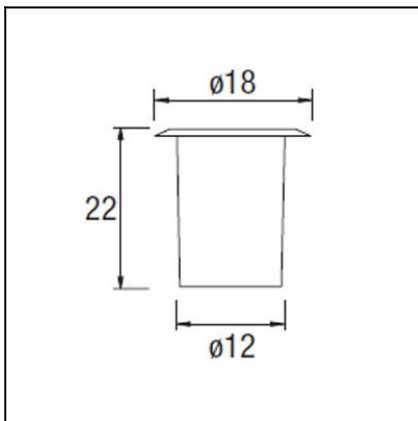




The photograph may not match the reference exactly. Please read the product description to identify the finish.

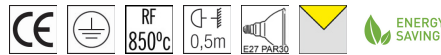


DESCRIPTION

May be flush mounted onto the ceiling. Body produced in injected aluminium, with an AISI 304 stainless steel surround and a tempered glass diffuser. For E-27 light source, compatible with LED, compact fluorescent and halogen lamps. Its wire outlets on both sides makes it suitable for an array installation. Includes flush mounting box.

TECHNICAL CHARACTERISTICS

| | |
|------------------------------|--------------------|
| Type: | Downlight |
| IP Protection degrees: | IP67 |
| IK Protection degrees: | IK08 |
| Lampholder: | 1 x E27/PAR-30 |
| Power (W): | E27/PAR-30 MAX 75W |
| Total power consumption (W): | 75 |
| Voltage / Frequency: | 230V/50-60Hz |
| Warranty (Years): | 2 |
| Units per box: | 6 |
| Net Weight (Kg): | 2.37 |
| EAN: | 8435111044568 |



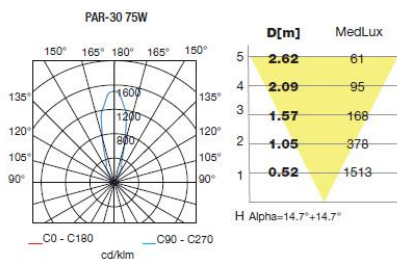
MATERIALS / FINISHES

Structure material: Stainless steel AISI304
Injected aluminium

Diffuser material: Glass

Structure finish: Polished

Diffuser finish: Tempered



Download photometric file .ldt /.ies

71-9639-CA-CA



Structure material: Stainless steel AISI316
Structure finish: Polished

