

OUT 

GEA

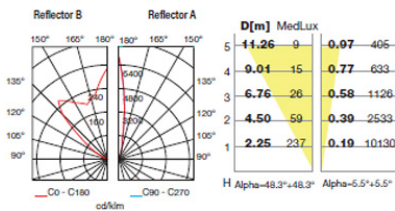
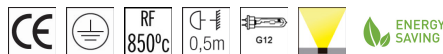
55-9323-Y4-37



The photograph may not match the reference exactly. Please read the product description to identify the finish.

TECHNICAL CHARACTERISTICS

Type:	Downlight
Adjustable $\pm 15^\circ$ on the vertical axis	
IP Protection degrees:	IP67
IK Protection degrees:	IK08
Lampholder:	1 x G12
Power (W):	G12 35W
Angle of the optics/Reflector:	12°, 100°
Voltage / Frequency:	220-240V/50Hz
Warranty (Years):	2
Units per box:	2
Net Weight (Kg):	4.78
EAN:	8435111059272



MATERIALS / FINISHES

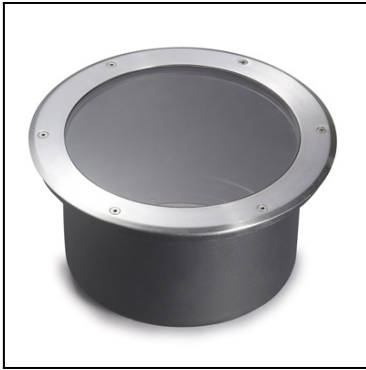
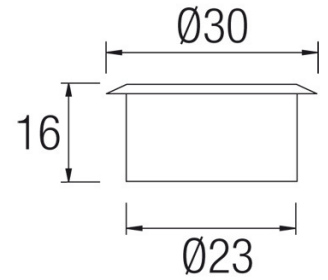

Structure material:	Stainless steel AISI304 Aluminium	Diffuser material:	Glass
Structure finish:	Polished	Diffuser finish:	Transparent

Download photometric file .ldt /.ies

GEAR

Gear included: Yes, Magnetic

71-9187-Y4-37

**Structure material:** Stainless steel AISI304**Structure finish:** Polished**Diffuser material:** Glass**Diffuser finish:** TransparentIP67 

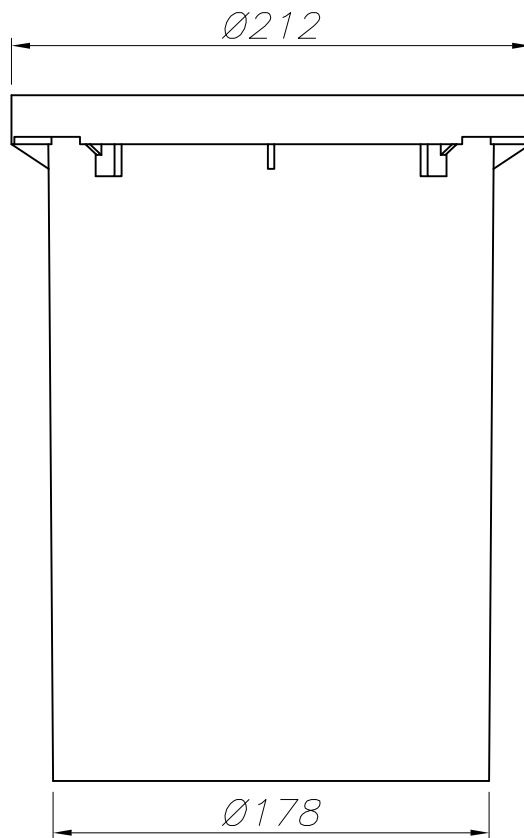
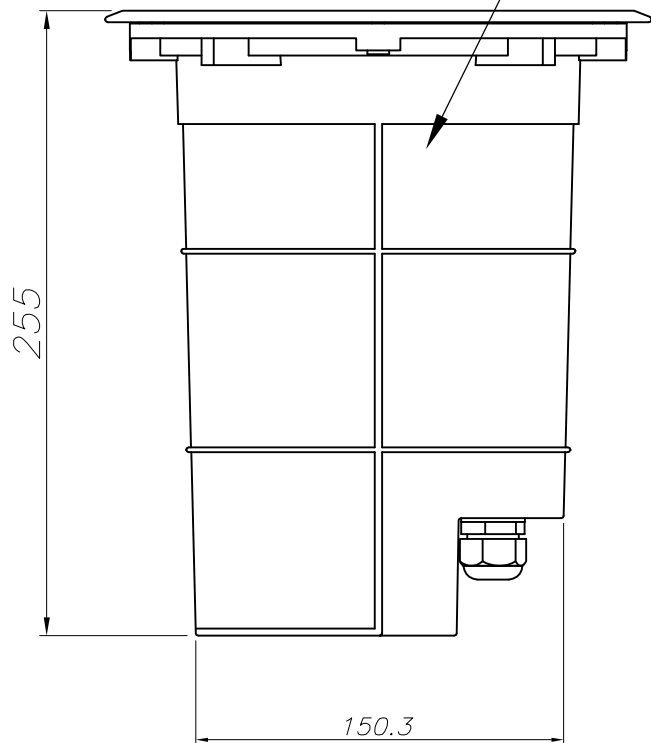
71-9453-CA-CA

**Structure material:** Stainless steel AISI316**Structure finish:** Polished

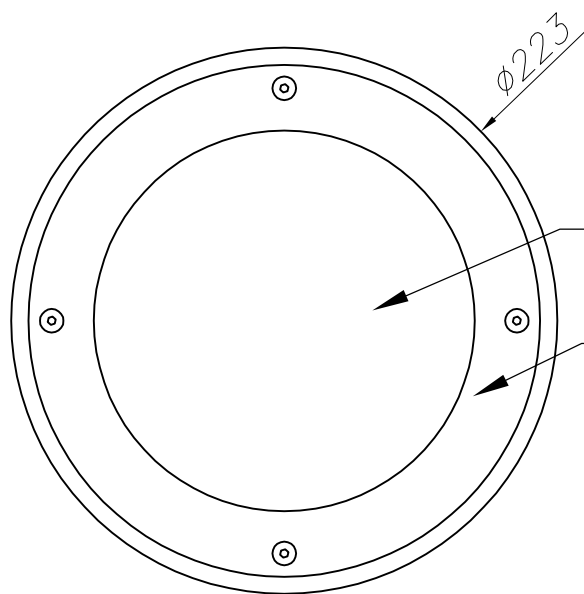
71-9638-CA-CA

**Structure material:** Stainless steel AISI316**Structure finish:** Polished

ALUMINIO INYECTADO
INJECTED ALUMINUM



CAJA DE EMPOTRAR
FLUSH FITTING BOX



CRISTAL TEMPLADO TRANSPARENTE
TEMPERED TRANSPARENT GLASS

ACERO INOXIDABLE AISI 304
STAINLESS STEEL AISI 304

