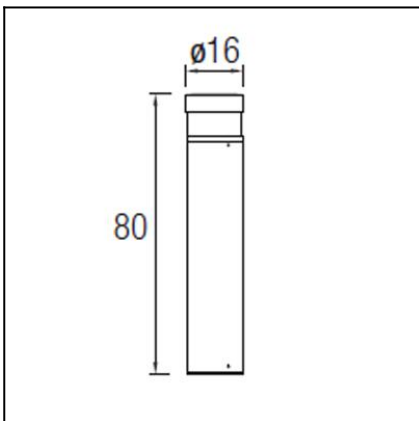




The photograph may not match the reference exactly. Please read the product description to identify the finish.

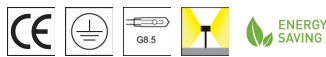


DESCRIPTION

Bollard with body produced in high grade aluminium. It comes complete with a clear polycarbonate diffuser inside and a frosted glass diffuser on the outside. Available in E-27 version for LED, compact fluorescent and halogen lamps and in HID version with 35W and 70W electronic components included. Light bulbs not included. Offered in two diameter options (16cm and 20cm) and in two finishes (light grey or dark grey).

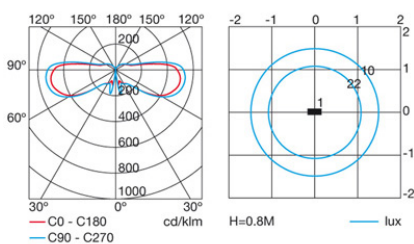
TECHNICAL CHARACTERISTICS

| | |
|------------------------|---------------|
| Type: | Beacon |
| IP Protection degrees: | IP54 |
| IK Protection degrees: | IK08 |
| Lampholder: | 1 x G8.5 |
| Power (W): | G8.5 70W |
| Voltage / Frequency: | 230V/50Hz |
| Warranty (Years): | 2 |
| Units per box: | 2 |
| Net Weight (Kg): | 5 |
| EAN: | 8435111082119 |



MATERIALS / FINISHES

| | | | |
|----------------------------|-----------------------|---------------------------|---------------------|
| Structure material: | High purity aluminium | Diffuser material: | Polycarbonate Glass |
| Structure finish: | Grey | Diffuser finish: | Transparent Matt |



GEAR

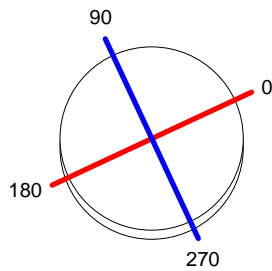
Gear included: Yes, Magnetic

Download photometric file .ldt / .ies

| Luminaria | | Ensayo | | Lámpara | |
|----------------------------|-------------------------------|-------------------------------|-------------------------------|-------------|---------------|
| Código | 55-9506-34-M2 | Código | 55-9505-34-M2 | Código | CDM-TC70W/830 |
| Nombre | Baliza NEWTON 70W CDM-TC opal | Nombre | Baliza NEWTON 35W CDM-TC opal | Número | 1 |
| Familia | - LEDS-C4 | Fecha | 05-04-2011 | Posición | Universal |
| Rendimiento | 47.48% | Sist. de Coordin. | C-G | Flujo Total | 6400.00 lm |
| Valor Máximo | 540.19 cd | Posición | C=90.00 G=80.00 | | Bisimétrico |
| Luminaria Redonda | Diam. 160 mm | Altura | 800 mm | | |
| Área Luminosa Redonda | Diam. 160 mm | Altura | 75 mm | | |
| Área Luminosa Horizontal | 0.020106 m ² | Área Emisión sobre Pl. 180° | 0.012000 m ² | | |
| Área Emisión sobre Pl. 0° | 0.012000 m ² | Área Emisión sobre Pl. 270° | 0.012000 m ² | | |
| Área Emisión sobre Pl. 90° | 0.012000 m ² | Área de deslumbramiento a 76° | 0.016508 m ² | | |
| Tipo de Simetría | Bisimétrico | Máximo Ángulo Gamma | 180 | | |
| Distancia de Ensayo | 6.44 | Flujo de Ensayo | 3300.00 lm | | |
| Operador | Asselum T2 | Voltaje de la Fuente | 230.00 V | | |
| Temperatura | 20.00 °C | Corriente de la Fuente | | | |
| Humedad | 50.00 % | Fotocélula | PRC | | |
| Notas | | | | | |

| Lámparas de la Luminaria | | | | | |
|--------------------------------|---------------|---------------------------|----------|-------|-------|
| Familia | Código | Nombre | Flujo/lm | Pot.W | Cant. |
| PHILIPS 2005 ILCOS MD,MT,ME,MC | CDM-TC70W/830 | MASTER col CDM-TC 70W/830 | 6400.00 | 71.00 | 1 |
| C.I.E. | 9 28 62 69 47 | D DIN 5040 | | B11 | |
| F UTE | -- | B NBN | | BZ 10 | |

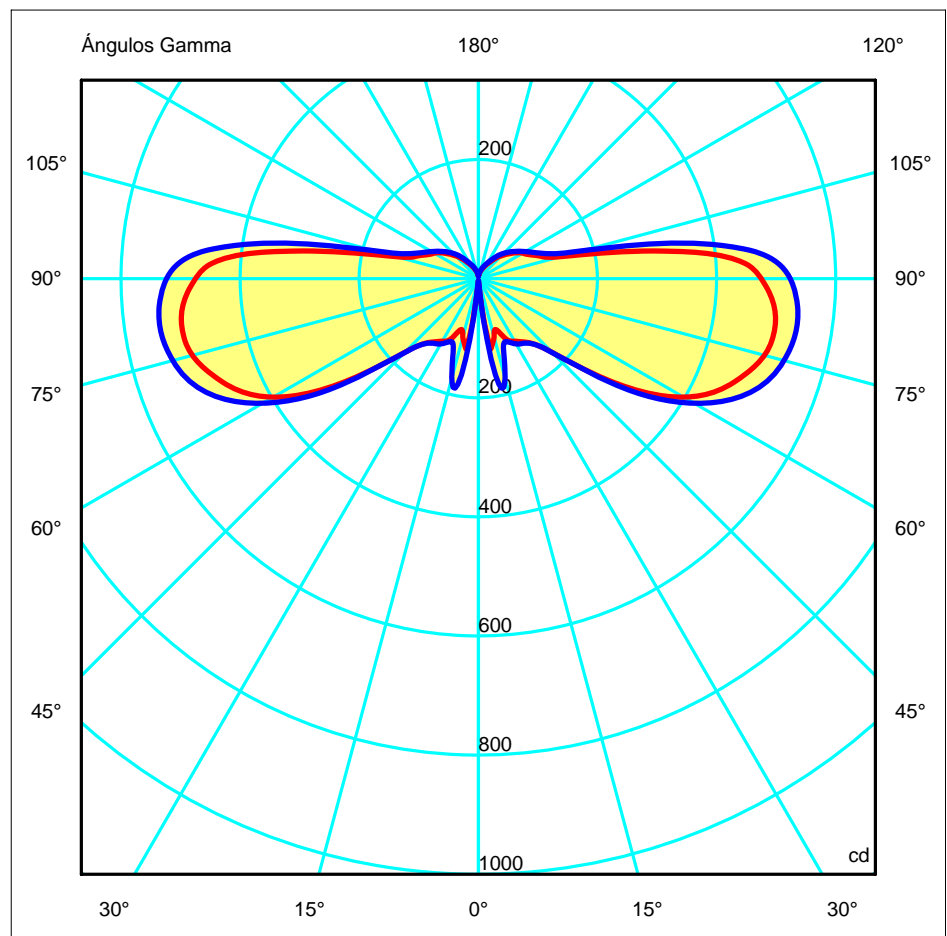
Diam=160mm

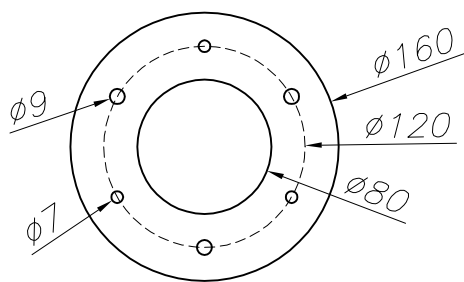
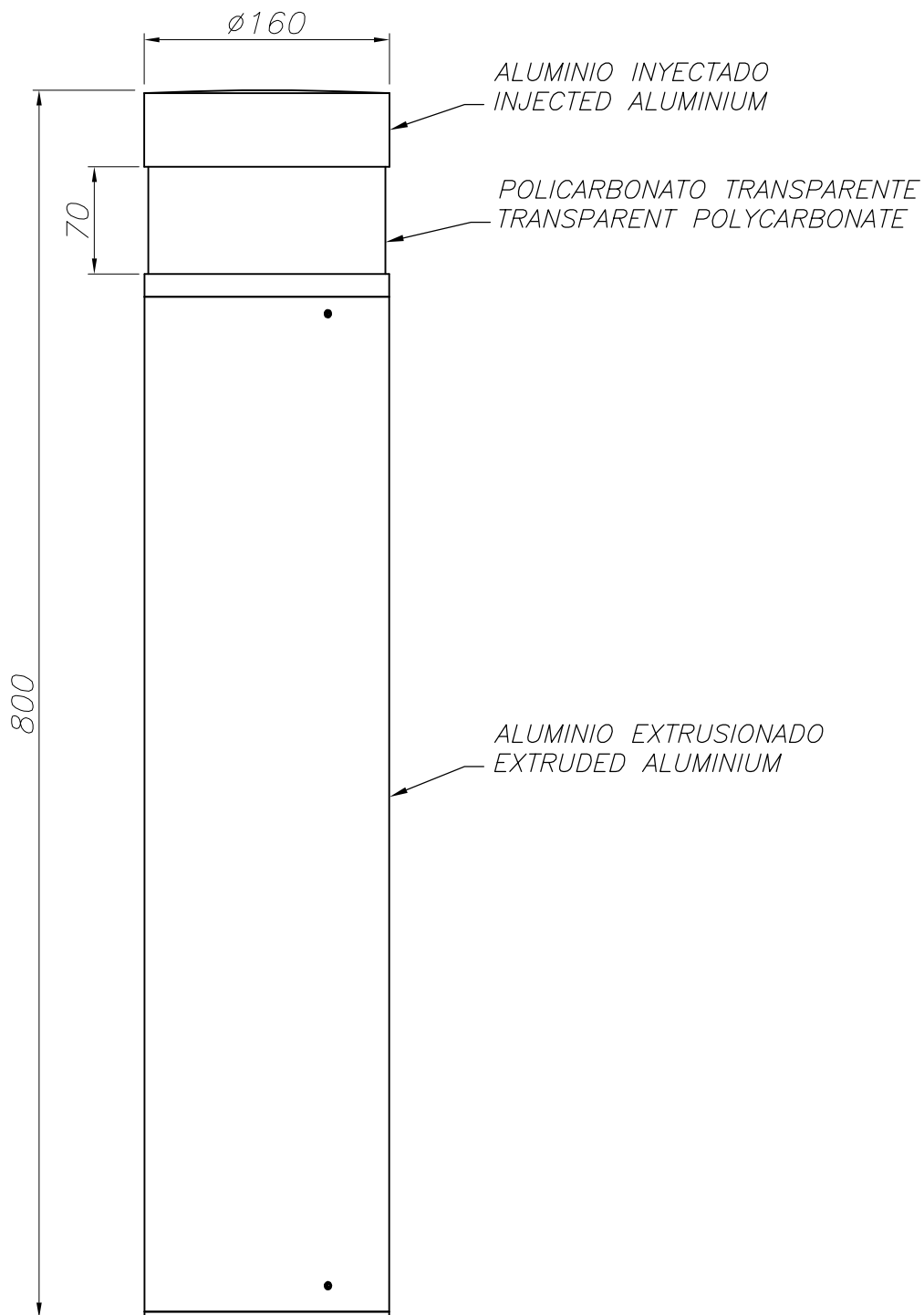


Semiplanos C

180.0 — 0.0
270.0 — 90.0

ULOR 14.61 %
DLOR 32.87 %
RN 30.77 %





PLANTILLA DE INSTALACION
INSTALLATION TEMPLATE

