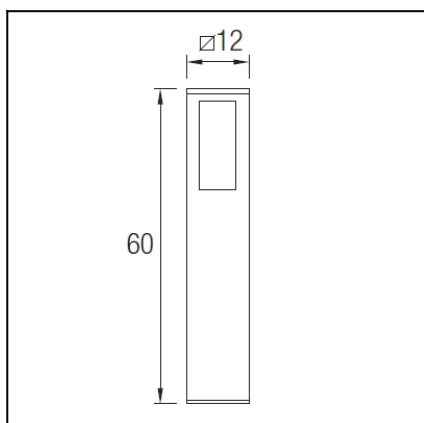


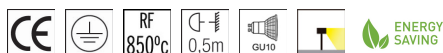


The photograph may not match the reference exactly. Please read the product description to identify the finish.



## TECHNICAL CHARACTERISTICS

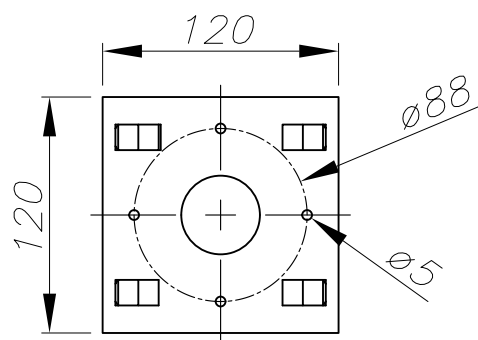
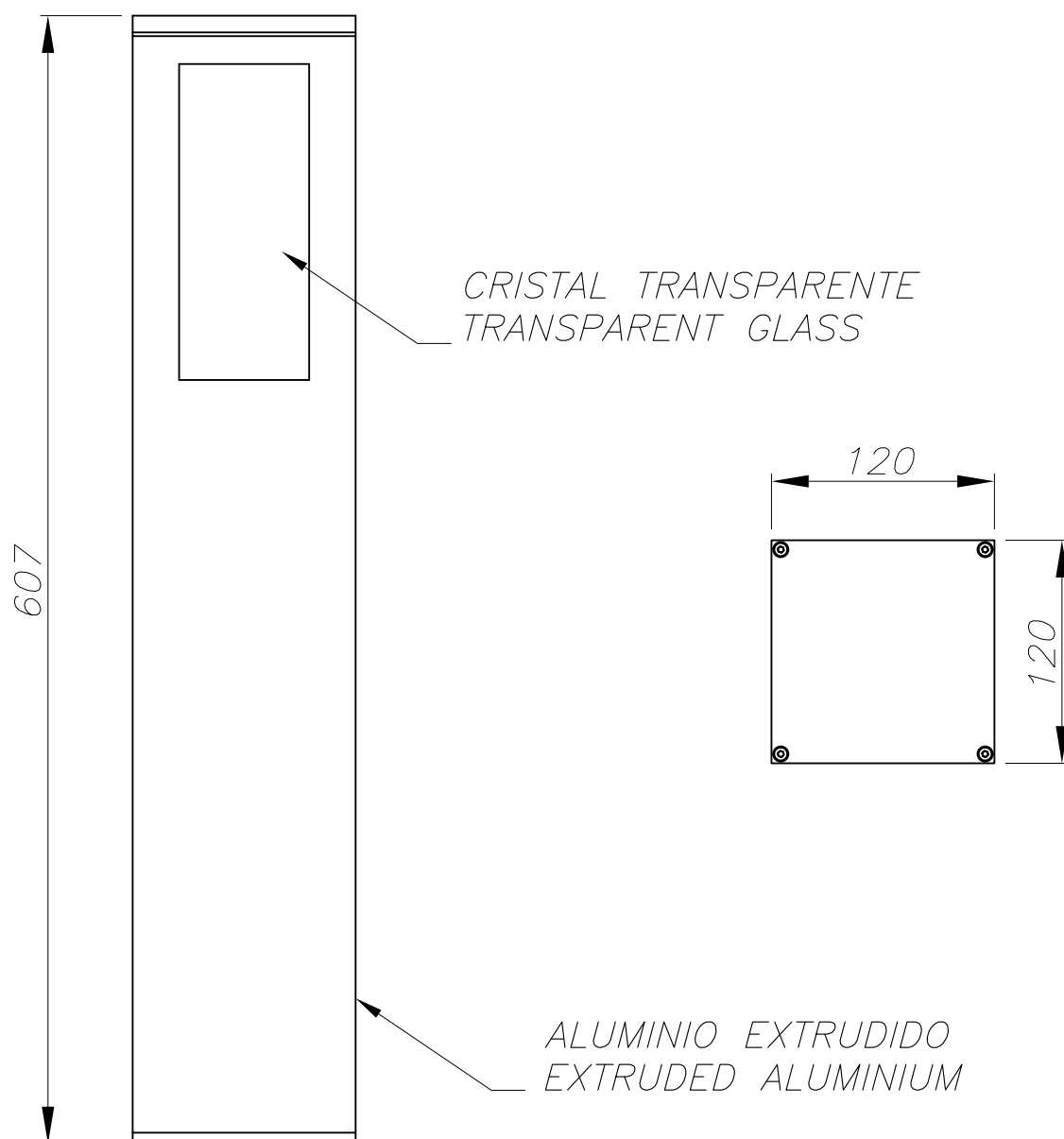
Type:	Beacon
Adjustable $\pm 45^\circ$ on the horizontal axis.	
IP Protection degrees:	IP65
IK Protection degrees:	IK08
Lampholder:	1 x GU10
Power (W):	GU10 Max.50W
Voltage / Frequency:	220-240V/50-60Hz
Warranty (Years):	2
Units per box:	2
Net Weight (Kg):	2.885
EAN:	8435381400378



## MATERIALS / FINISHES

<b>Structure material:</b>	Extruded aluminium	<b>Diffuser material:</b>	Glass
<b>Structure finish:</b>	Urban grey	<b>Diffuser finish:</b>	Transparent

Download photometric file .ldt /.ies



PLANTILLA DE INSTALACIÓN  
INSTALLATION TEMPLATE

