

# AURELIA

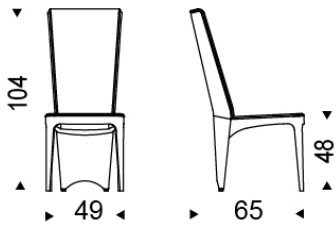
Design: Emanuele Zenere



Le informazioni qui riportate sono basate sugli ultimi dati pubblicati a listino. L'azienda si riserva il diritto di apportare modifiche ai modelli senza preavviso.

**CATELAN ITALIA** spa - Via Pilastrì 15 - 36010 Carrè - Vicenza Italy - Phone +39 0445318711 - Fax +39 0445 314289 - Email: [info@cattelanitalia.com](mailto:info@cattelanitalia.com) [www.cattelanitalia.com](http://www.cattelanitalia.com)

## DIMENSIONS



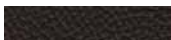
49x65x104h

## DESCRIPTION

Chair with steel frame and polyurethane foam. Cover in fabric, synthetic leather or soft leather as per sample card. The cover is not removable.

## FINISHES:

### soft leather



943 MOKA



946 MARRONE



944 BORDEAUX



941 RUBINO



942 FANGO



945 SAFARI



975 KAKI



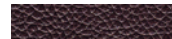
981 BISCOTTO



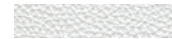
985 RESINA



992 LOBSTER



984 BRONZO



PL71 BIANCO PERLATO  
LUCIDO



PL73 NERO PERLATO  
LUCIDO



950 TORTORA



953 ARDESIA



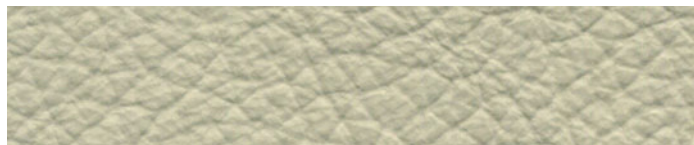
954 VERDE



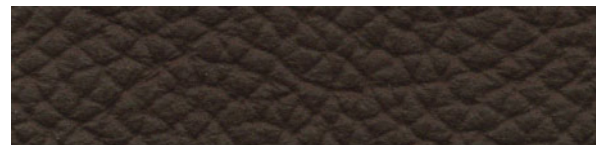
955 MORA



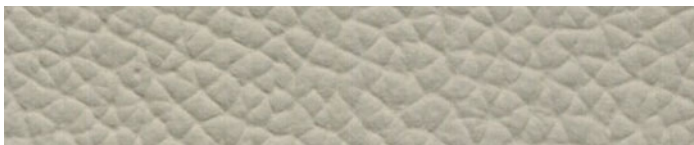
971 BIANCO



967 AVORIO



891 TESTA DI MORO



948 LINO



949 CENERE



952 SMOKE

### crocodile soft leather



CR1 TESTA DI MORO



CR71 BIANCO



CR73 NERO

## cat. A fabric



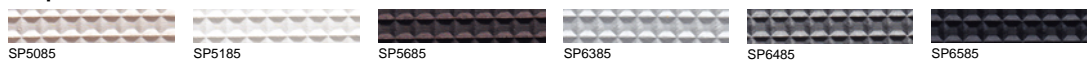
## cat. B fabric



## synthetic leather



## sculpture



## leathertex

