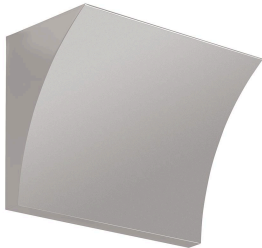
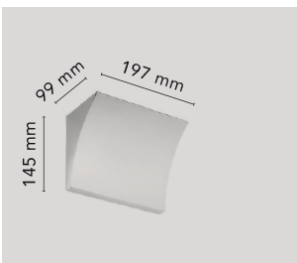


Pochette

by Rodolfo Dordoni , 2003



Wall lamp providing indirect light. Pressure die-cast Zamak alloy structure. Molded steel, galvanized white wall attachment containing the wall attachment system as well as the electrical devices. Pochette has a single dimmable light source in the traditional recessed series.



Mounting	Wall
Environment	Indoor
Finish	Chrome, Grey, Shiny white
Weight	1.6 Kg
Light sources available	1 x HD R7s 160W ECO 2900K 3100lm - RF20131
Emergency	Without
Voltage	230
Power	MAX 200W
Battery	No
Supply included	Yes

Materials Zamak

Colors

- F9700020 - Grey
- F9700057 - Chrome
- F9700009 - Shiny white