



ACUSTICO 12

80x80 60x120 30x120 60x60 30x60 30x30

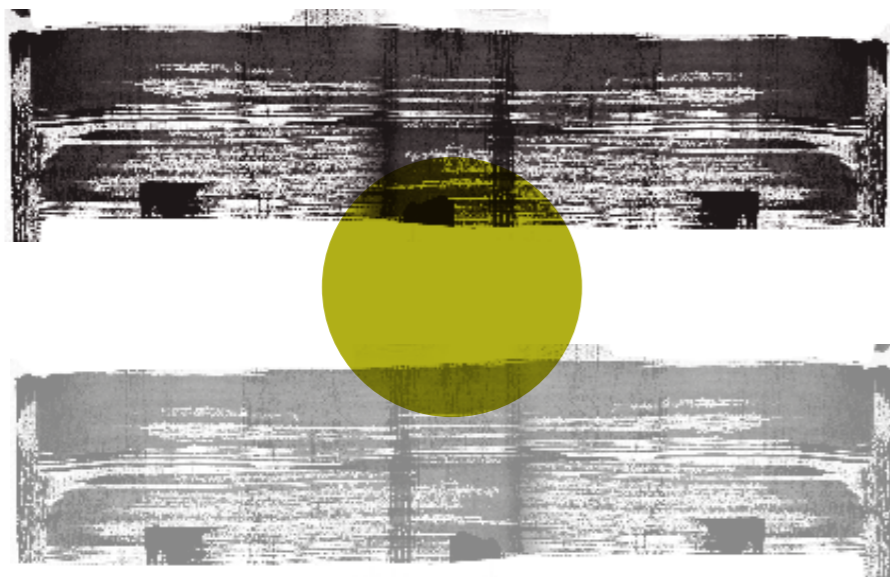
COTTO

12

il suono della terracotta,
colori **polverosi**

The sound of terracotta, dusty colours.
Le chant de la terre cuite, des couleurs poudrées.
Der Klang von Terrakotta, staubige Farben.
El sonido de la terracota, colores pulverulentos.
Звук терракоты, пыльные цвета.

(punti di vista)



point of view

idee in
movimento

Ever-developing ideas

12



807K2R
COTTO NAT. RETT.
80x80 - 31^{1/2}"x31^{1/2}"



987K2R
COTTO NAT. RETT.
60x120 - 23^{5/8}"x47^{1/4}"



987K2R
COTTO NAT. RETT.
60x120 - 23^{5/8}"x47^{1/4}"





987K6R
BROWN NAT. RETT.
60x120 - 23^{5/8}"x47^{1/4}"



607K6R
BROWN NAT. RETT.
60x60 - 23^{5/8}"x23^{5/8}"



307K6R
BROWN NAT. RETT.
30x60 - 11^{13/16}"x23^{5/8}"

307KOSR
WHITE NAT. RETT.
30x30 - 11^{13/16}"x11^{13/16}"





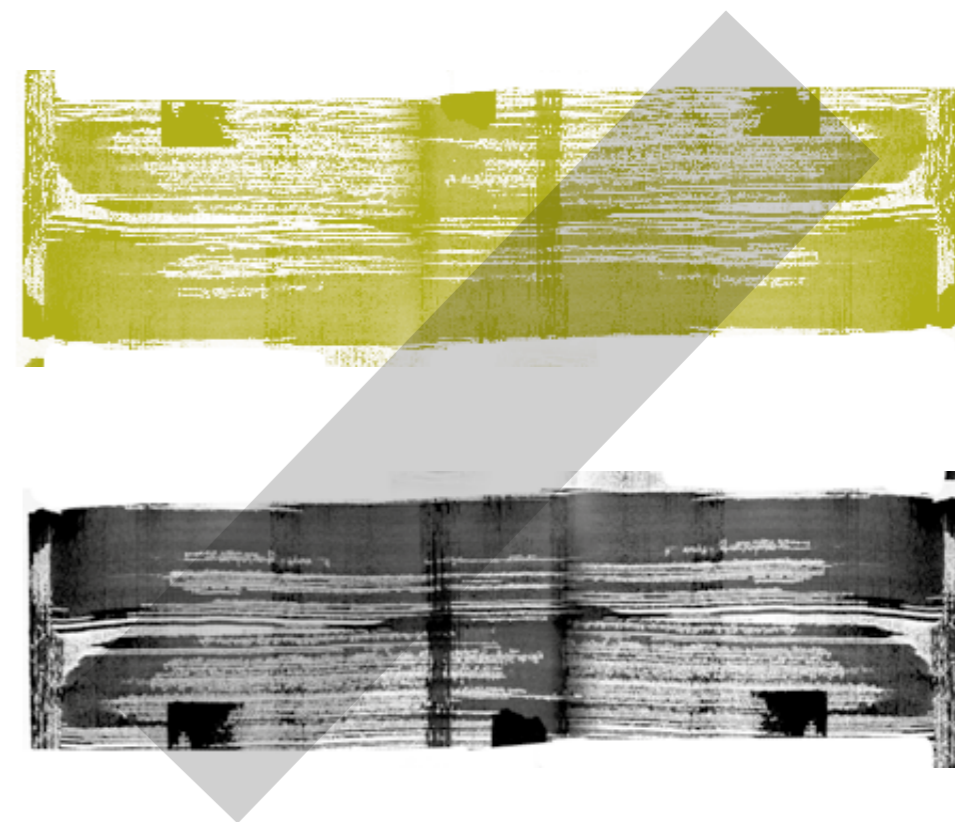
307KOSR
WHITE NAT. RETT.
30x30 - 11^{13/16}"x11^{13/16}"



forme ampie e armonia

Ample dimensions and harmony

differences / analogies



(differenze) (analogie)

307K2SR
COTTO NAT. RETT.
30x30 - 11^{13/16}"x11^{13/16}"





307K6SR
BROWN NAT. RETT.
30x30 - 11^{13/16}"x11^{13/16}"

307K6RB
ACUSTICO 30 BROWN
30x30 - 11^{13/16}"x11^{13/16}"

987KOR
WHITE NAT. RETT.
60x120 - 23⁵/₈"x47¹/₄"

607KOR
WHITE NAT. RETT.
60x60 - 23⁵/₈"x23⁵/₈"

637KOSR
WHITE NAT. RETT.
30x60 - 11¹³/₁₆"x23⁵/₈"

307KOSR
WHITE NAT. RETT.
30x30 - 11¹³/₁₆"x11¹³/₁₆"





307K8SR
GREY NAT. RETT.
30x30 - 11^{13/16}"x11^{13/16}"



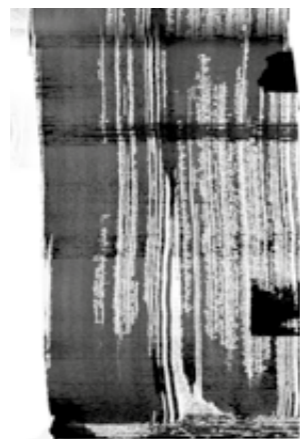
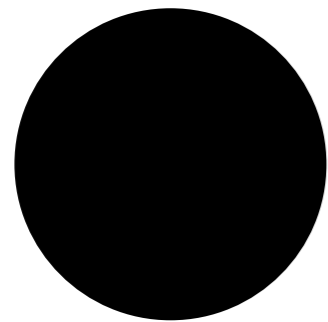


307K8SR
GREY NAT. RETT.
30x30 - 11^{13/16}"x11^{13/16}"



607K8R
GREY NAT. RETT.
60x60 - 23^{5/8}"x23^{5/8}"





(evoluzione)



12

le dimensioni si **espandono**
per rispondere
al contemporaneo

Sizes expand, reflecting contemporary tastes

evolution

307K8SR
GREY NAT. RETT.
30x30 - 11^{13/16}"x11^{13/16}"





607K8R
GREY NAT. RETT.
60x60 - 23^{5/8}"x23^{5/8}"





987K8R
GREY NAT. RETT.
60x120 - 23^{5/8}"x47^{1/4}"

607KOR
WHITE NAT. RETT.
60x60 - 23⁵/₈"x23⁵/₈"

530D3RB
PAGLIA METROPOLI - STATALE9
15x120 - 57⁸/₈"x47¹/₄"

530D3R
PAGLIA - STATALE9
15x120 - 57⁸/₈"x47¹/₄"





807K0R
WHITE NAT. RETT.
80x80 - 31¹/₂"x31¹/₂"





987K3R
SAND NAT. RETT.
60x120 - 23^{5/8}"x47^{1/4}"

607K3R
SAND NAT. RETT.
60x60 - 23^{5/8}"x23^{5/8}"

607K3RB
ACUSTICO 60 SAND
60x60 - 23^{5/8}"x23^{5/8}"



557K6R
BROWN NAT. RETT.
30x120 - 11^{13/16}"x47^{1/4}"

solutions

Evolution and style

evoluzione e
stile

12

(soluzioni)





607K2RZ
COTTO RETT.
60x60 - 23^{5/8}"x23^{5/8}"

AntiSlip



987K0R
WHITE NAT. RETT.
60x120 - 23⁵/₈"x47¹/₄"



557K8R
GREY NAT. RETT.
30x120 - 11¹³/₁₆" x 47¹/₄"



807K8R
GREY NAT. RETT.
80x80 - 31 1/2" x 31 1/2"





607K3R
SAND NAT. RETT.
60x60 - 23^{5/8}"x23^{5/8}"



637K3SR
SAND NAT. RETT.
30x60 - 11^{13/16}"x23^{5/8}"



637K8SR
GREY NAT. RETT.
30x60 - 11^{13/16}"x23^{5/8}"

40x120

20MM

X417K2R
COTTO NAT. RETT.
40x120 - 15^{3/4}"x47^{1/4}"



ACUSTICO 12 20mm offre la possibilità di realizzare des espaces extérieurs d'une grande valeur esthétique, sans toutefois renoncer aux prestations techniques.

Les caractéristiques spécifiques de ACUSTICO 12 20mm permettent d'intégrer parfaitement le matériau à l'environnement ambiant, offrant la possibilité de créer simplement et efficacement des parcours faciles à nettoyer.

L'épaisseur de ACUSTICO 12 20mm garantit une résistance élevée aux charges et aux sollicitations, la rendant idéale pour l'intérieur et l'extérieur des espaces publics.

ACUSTICO 12 20mm est facile à poser sur l'herbe, le sable et le gravier.

Une fois collé sur chape, le produit permet de réaliser des sols carrossables pour des espaces industriels et commerciaux. Idéal pour rampes d'accès et garages.

ACUSTICO 12 20mm est idéale pour la création de planchers surélevés.

ACUSTICO 12 20mm bietet eine wertige Optik und ausgezeichnete Leistungsmerkmale und ist die ideale Lösung für die Gestaltung von Außenbereichen.

Die spezifischen Eigenschaften von ACUSTICO 12 20mm gestatten eine perfekte Einbindung des Materials in den räumlichen Kontext und die einfache Gestaltung von Geh- und Fahrwegen im Außenbereich.

Die hohe Fliesenstärke von ACUSTICO 12 20mm gewährleistet eine ausgezeichnete Robustheit. Damit erweist sich die Kollektion als ideal für öffentliche Innen- und Außenbereiche.

ACUSTICO 12 20mm lässt sich problemlos auf Gras, Sand und Kies verlegen.

Für befahrbare industrielle und gewerbliche Bodenbeläge empfiehlt sich die Verbundverlegung auf Estrich. Ideal für Zufahrten und Garagen.

ACUSTICO 12 20mm ist die perfekte Lösung für Doppelböden.

ACUSTICO 12 20mm ofrece la posibilidad de revestir espacios exteriores de modo estéticamente muy agradable sin por ello tener que renunciar a unas magníficas prestaciones técnicas.

Las características específicas de ACUSTICO 12 20mm permiten integrar perfectamente el material en el entorno, brindando la posibilidad de crear de manera sencilla y eficaz caminitos y carriles al aire libre.

El elevado grosor de ACUSTICO 12 20mm garantiza una considerable resistencia, hecho por el que este tipo de material resulta de lo más idóneo para ámbitos públicos, tanto interiores como exteriores.

ACUSTICO 12 20mm se puede colocar fácilmente sobre superficies tan diversas como la hierba, la arena y la grava.

Colocado con cola sobre la capa de relleno, permite realizar pavimentaciones transitables industriales y comerciales. Ideal para rampas de acceso y garajes.

ACUSTICO 12 20mm es un material de lo más idóneo para la creación de pavimentos sobreelevados.

С помощью представленной в коллекции ACUSTICO 12 20mm можно обустроить открытые площадки, придавая им высокую эстетическую ценность и не поступаясь какими-либо техническими характеристиками.

Благодаря особым свойствам представленная в коллекции ACUSTICO 12 20mm гармонирует с окружающей средой. С ее помощью можно легко проложить надежные дорожки и переходы вне помещений.

Представленная в коллекции ACUSTICO 12 20mm отличается высокой прочностью, а потому идеально подходит для обустройства помещений общественных зданий и прилегающих территорий.

Представленная в коллекции ACUSTICO 12 20mm легко укладывается на траву, песок и щебень.

Укладка на клей поверх стяжки позволяет обустроить территорию для проезда на промышленных и коммерческих предприятиях. Идеально подходит для наклонных въездов и гаражей.

Представленная в коллекции ACUSTICO 12 20mm идеально подходит для монтажа фальшполов.

ACUSTICO 12 20mm offre la possibilità di realizzare spazi esterni di grande valore estetico, senza rinunciare alle prestazioni tecniche.

Le caratteristiche specifiche di ACUSTICO 12 20mm permettono di integrare perfettamente il materiale con l'ambiente circostante, offrendo la possibilità di creare in modo semplice ed efficace camminamenti e percorsi outdoor. L'alto spessore di ACUSTICO 12 20mm garantisce un'elevata resistenza rendendolo ideale negli ambienti interni ed esterni pubblici.

ACUSTICO 12 20mm è facile da posare su erba, su sabbia, su ghiaia.

La posa a colla su massetto permette di realizzare pavimentazioni carrabili industriali e commerciali. Ideale per rampe di accesso e garage.

ACUSTICO 12 20mm è l'ideale per la creazione di pavimenti sopraelevati.

ACUSTICO 12 20mm offers the chance to develop extremely aesthetically pleasing external spaces without compromising on technical expertise.

The specific qualities of ACUSTICO 12 20mm allow you to perfectly integrate the material in the surrounding environment, making it possible to create walkways and outdoor paths easily and effectively.

The thickness of ACUSTICO 12 20mm guarantees excellent resistance, making it ideal for use in both indoor and outdoor public spaces.

ACUSTICO 12 20mm is easy to lay on grass, sand and gravel.

By gluing it down to screed it is possible to create industrial and commercial paved driveways. Ideal for access ramps and garages.

ACUSTICO 12 20mm is ideal for the creation of cavity floors.

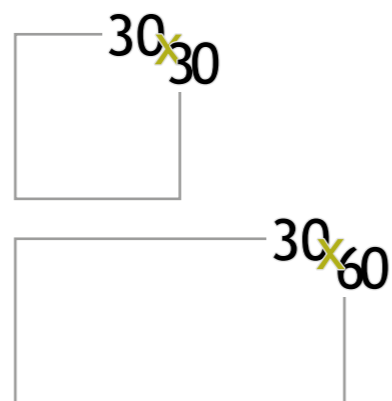


a different surfaces



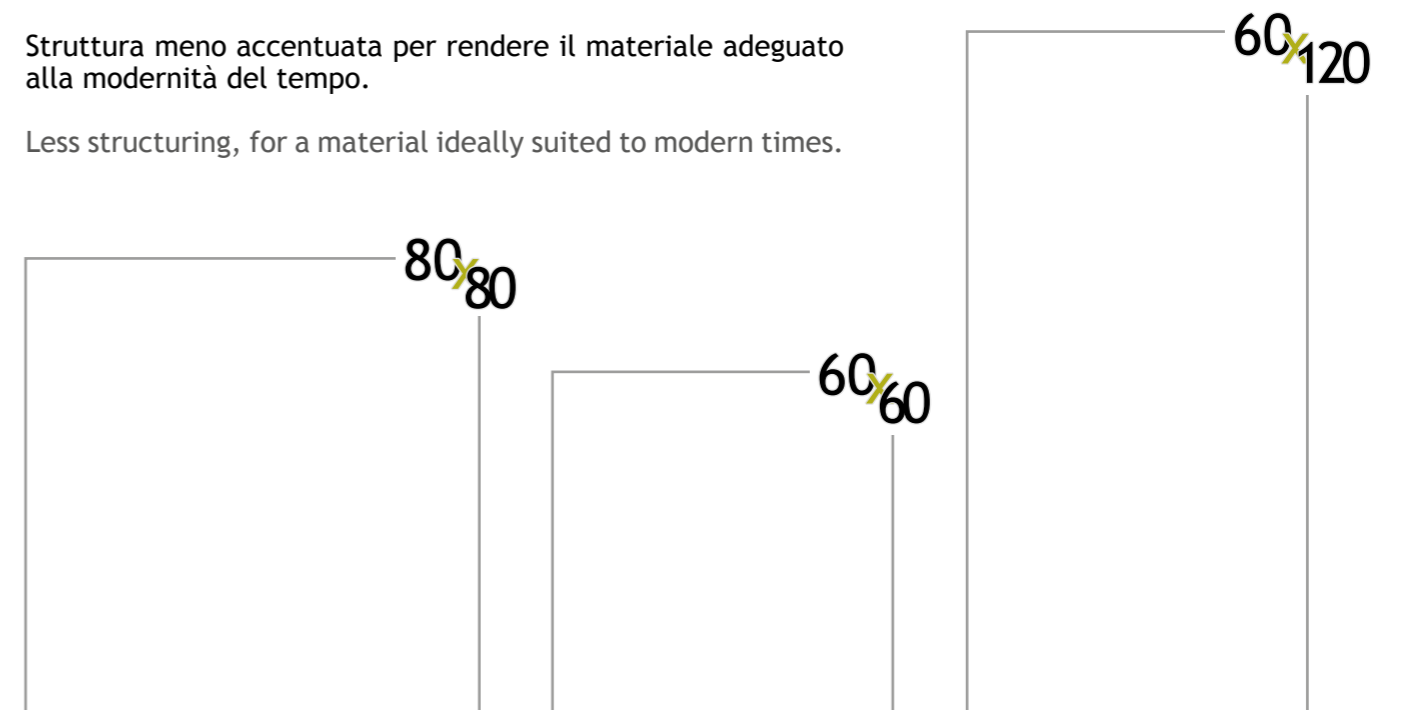
Struttura più accentuata al fine di proporre fedelmente lo spirito naturale della terracotta.

More structured surface, to express all the natural spirit of terracotta.



Struttura meno accentuata per rendere il materiale adeguato alla modernità del tempo.

Less structuring, for a material ideally suited to modern times.



colori/formati

WHITE



807KOR White Nat. Rett.
80x80_31^{1/2}"x31^{1/2}" 79A ■



607KOR White Nat. Rett.
60x60_23^{5/8}"x23^{5/8}" 71 ■



637KOSR White Nat. Rett.
30x60_11^{13/16}"x23^{5/8}" 71 ■



987KOR White Nat. Rett.
60x120_23^{5/8}"x47^{1/4}" 79B ■



557KOR White Nat. Rett.
30x120_11^{13/16}"x47^{1/4}" 80 ■



307KOSR White Nat. Rett.
30x30_11^{13/16}"x11^{13/16}" 67 ■

AntiSlip



X417KOR White Nat. Rett.
40x120_15^{3/4}"x47^{1/4}" 89 ■



607KORZ White Nat. Rett.
60x60_23^{5/8}"x23^{5/8}" 71 ■

HT
Alto traffico pedonale
(es. stazioni ferroviarie, aeroporti, centri commerciali)
Heavy pedestrian traffic
(e.g. railway stations, airports, retail malls)
Piétinement intense
(ex. gares, aéroports, centres commerciaux)
Starker Fußgängerverkehr
(z.B. Bahnhöfe, Flughäfen, Einkaufszentren)
Alto tráfico peatonal
(por ej. estaciones de tren, aeropuertos, centros comerciales).
Интенсивное пешеходное движение
(напр., железнодорожные вокзалы, аэропорты)



colori/formati

SAND



807K3R Sand Nat. Rett.
80x80_31^{1/2}"x31^{1/2}" 79A ■



607K3R Sand Nat. Rett. U₃P₃E₃C₂
60x60_23^{5/8}"x23^{5/8}" 71 ■



637K3SR Sand Nat. Rett.
30x60_11^{13/16}"x23^{5/8}" 71 ■



987K3R Sand Nat. Rett. U₃P₃E₃C₂
60x120_23^{5/8}"x47^{1/4}" 79B ■



557K3R Sand Nat. Rett.
30x120_11^{13/16}"x47^{1/4}" 80 ■



307K3SR Sand Nat. Rett. U₃P₃E₃C₂
30x30_11^{13/16}"x11^{13/16}" 67 ■

AntiSlip



607K3RZ Sand Nat. Rett.
60x60_23^{5/8}"x23^{5/8}" 71 ■

HT
Alto traffico pedonale
(es. stazioni ferroviarie, aeroporti, centri commerciali)
Heavy pedestrian traffic
(e.g. railway stations, airports, retail malls)
Piétinement intense
(ex. gares, aéroports, centres commerciaux)
Starker Fußgängerverkehr
(z.B. Bahnhöfe, Flughäfen, Einkaufszentren)
Alto tráfico peatonal
(por ej. estaciones de tren, aeropuertos, centros comerciales).
Интенсивное пешеходное движение
(напр., железнодорожные вокзалы, аэропорты)

COTTO



807K2R Cotto Nat. Rett.
80x80_31^{1/2}"x31^{1/2}" 79A ■



607K2R Cotto Nat. Rett.
60x60_23^{5/8}"x23^{5/8}" 71 ■



637K2SR Cotto Nat. Rett.
30x60_11^{13/16}"x23^{5/8}" 71 ■



987K2R Cotto Nat. Rett.
60x120_23^{5/8}"x47^{1/4}" 79B ■



557K2R Cotto Nat. Rett.
30x120_11^{13/16}"x47^{1/4}" 80 ■



307K2SR Cotto Nat. Rett.
30x30_11^{13/16}"x11^{13/16}" 67 ■

20MM



X417K2R Cotto Nat. Rett.
40x120_15^{3/4}"x47^{1/4}" 89 ■



607K2RZ Cotto Nat. Rett.
60x60_23^{5/8}"x23^{5/8}" 71 ■

AntiSlip



Alto traffico pedonale
(es. stazioni ferroviarie, aeroporti, centri commerciali)
Heavy pedestrian traffic
(e.g. railway stations, airports, retail malls)
Piétinement intense
(ex. gares, aéroports, centres commerciaux)
Starker Fußgängerverkehr
(z.B. Bahnhöfe, Flughäfen, Einkaufszentren)
Alto tráfico peatonal
(por ej. estaciones de tren, aeropuertos, centros comerciales).
Интенсивное пешеходное движение
(напр., железнодорожные вокзалы, аэропорты)



BROWN



807K6R Brown Nat. Rett.
80x80_31^{1/2}"x31^{1/2}" 79A ■



607K6R Brown Nat. Rett.
60x60_23^{5/8}"x23^{5/8}" 71 ■



637K6SR Brown Nat. Rett.
30x60_11^{13/16}"x23^{5/8}" 71 ■



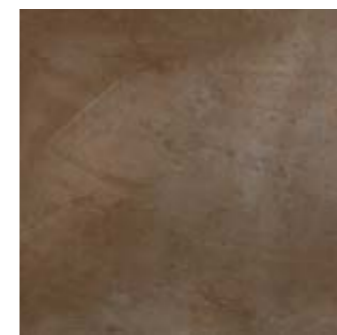
987K6R Brown Nat. Rett.
60x120_23^{5/8}"x47^{1/4}" 79B ■



557K6R Brown Nat. Rett.
30x120_11^{13/16}"x47^{1/4}" 80 ■



307K6SR Brown Nat. Rett.
30x30_11^{13/16}"x11^{13/16}" 67 ■



607K6RZ Brown Nat. Rett.
60x60_23^{5/8}"x23^{5/8}" 71 ■

AntiSlip



Alto traffico pedonale
(es. stazioni ferroviarie, aeroporti, centri commerciali)
Heavy pedestrian traffic
(e.g. railway stations, airports, retail malls)
Piétinement intense
(ex. gares, aéroports, centres commerciaux)
Starker Fußgängerverkehr
(z.B. Bahnhöfe, Flughäfen, Einkaufszentren)
Alto tráfico peatonal
(por ej. estaciones de tren, aeropuertos, centros comerciales).
Интенсивное пешеходное движение
(напр., железнодорожные вокзалы, аэропорты)

GREY



807K8R Grey Nat. Rett.
80x80_31^{1/2}"x31^{1/2}" 79A ■



607K8R Grey Nat. Rett.
60x60_23^{5/8}"x23^{5/8}" 71 ■



637K8SR Grey Nat. Rett.
30x60_11^{13/16}"x23^{5/8}" 71 ■



987K8R Grey Nat. Rett.
60x120_23^{5/8}"x47^{1/4}" 79B ■



557K8R Grey Nat. Rett.
30x120_11^{13/16}"x47^{1/4}" 80 ■



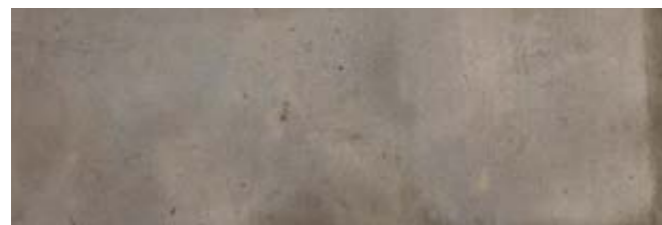
307K8SR Grey Nat. Rett.
30x30_11^{13/16}"x11^{13/16}" 67 ■

AntiSlip



607K8RZ Grey Nat. Rett.
60x60_23^{5/8}"x23^{5/8}" 71 ■

20MM



X417K8R Grey Nat. Rett.
40x120_15^{3/4}"x47^{1/4}" 89 ■



Alto traffico pedonale
(es. stazioni ferroviarie, aeroporti, centri commerciali)
Heavy pedestrian traffic
(e.g. railway stations, airports, retail malls)
Piétinement intense
(ex. gares, aéroports, centres commerciaux)
Starker Fußgängerverkehr
(z.B. Bahnhöfe, Flughäfen, Einkaufszentren)
Alto tráfico peatonal
(por ej. estaciones de tren, aeropuertos, centros comerciales).
Интенсивное пешеходное движение
(напр., железнодорожные вокзалы, аэропорты)

ACUSTICO 60



607K0RB White Nat. Rett.
60x60_23^{5/8}"x23^{5/8}"
PCS. BOX. 3 87 ■



607K3RB Sand Nat. Rett.
60x60_23^{5/8}"x23^{5/8}"
PCS. BOX. 3 87 ■



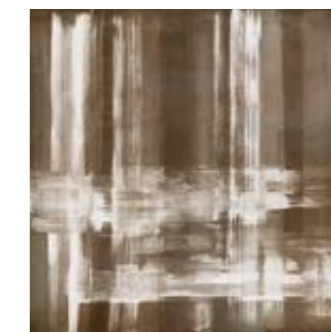
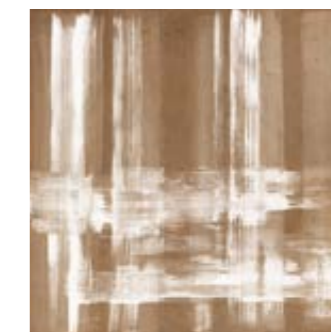
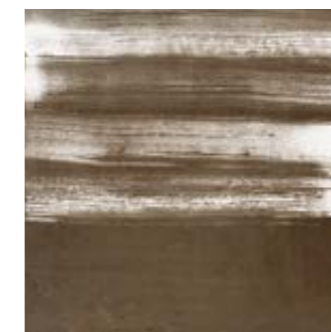
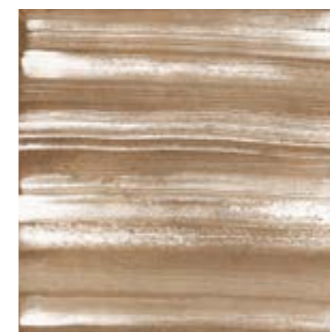
607K2RB Cotto Nat. Rett.
60x60_23^{5/8}"x23^{5/8}"
PCS. BOX. 3 87 ■



607K6RB Brown Nat. Rett.
60x60_23^{5/8}"x23^{5/8}"
PCS. BOX. 3 87 ■



607K8RB Grey Nat. Rett.
60x60_23^{5/8}"x23^{5/8}"
PCS. BOX. 3 87 ■





decors - decors - dekore - decorados - декоры

decori

ACUSTICO 30



307KORB White Nat. Rett.
30x30_11^{13/16}"x11^{13/16}"
PCS. BOX. 4 46 ■



307K3RB Sand Nat. Rett.
30x30_11^{13/16}"x11^{13/16}"
PCS. BOX. 4 46 ■



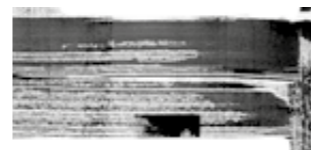
307K2RB Cotto Nat. Rett.
30x30_11^{13/16}"x11^{13/16}"
PCS. BOX. 4 46 ■



307K6RB Brown Nat. Rett.
30x30_11^{13/16}"x11^{13/16}"
PCS. BOX. 4 46 ■



307K8RB Grey Nat. Rett.
30x30_11^{13/16}"x11^{13/16}"
PCS. BOX. 4 46 ■



decors - decors - dekore - decorados - декоры

decori

MOSAICO* TESSERA/CHIP 2,3x2,3 (7/8"x 7/8")



Z307K0 White Nat.
30x30_11^{13/16}"x11^{13/16}"
PCS. BOX. 5 101 ■



Z307K3 Sand Nat.
30x30_11^{13/16}"x11^{13/16}"
PCS. BOX. 5 101 ■



Z307K2 Cotto Nat.
30x30_11^{13/16}"x11^{13/16}"
PCS. BOX. 5 101 ■



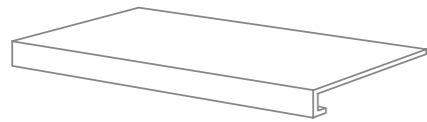
Z307K6 Brown Nat.
30x30_11^{13/16}"x11^{13/16}"
PCS. BOX. 5 101 ■



Z307K8 Grey Nat.
30x30_11^{13/16}"x11^{13/16}"
PCS. BOX. 5 101 ■

* Su rete in fibra - On fibre mesh backing - Sur filet en fibre de verre - Auf Glasfasernetz - Sobre malla de fibra - На волоконной сетке

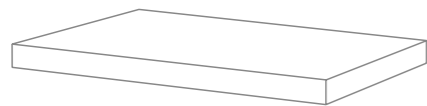
pezzi speciali



GRADONE - STEP

CR7K0R White Nat. Rett.
 CR7K3R Sand Nat. Rett.
 CR7K2R Cotto Nat. Rett.
 CR7K6R Brown Nat. Rett.
 CR7K8R Grey Nat. Rett.

33x120x3,2x3,2_12^{15/16"}x47^{1/4"}x1^{1/4"}x1^{1/4"}
 PCS. BOX 2 96 ■



ANGOLARE DX - CORNER TILE DX

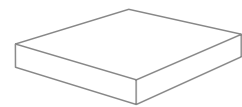
AC7K0RD White Nat. Rett.
 AC7K3RD Sand Nat. Rett.
 AC7K2RD Cotto Nat. Rett.
 AC7K6RD Brown Nat. Rett.
 AC7K8RD Grey Nat. Rett.

33x120x3,2x3,2_12^{15/16"}x47^{1/4"}x1^{1/4"}x1^{1/4"}
 PCS. BOX 1 98 ■

ANGOLARE SX - CORNER TILE SX

AC7K0RS White Nat. Rett.
 AC7K3RS Sand Nat. Rett.
 AC7K2RS Cotto Nat. Rett.
 AC7K6RS Brown Nat. Rett.
 AC7K8RS Grey Nat. Rett.

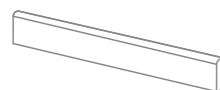
33x120x3,2x3,2_12^{15/16"}x47^{1/4"}x1^{1/4"}x1^{1/4"}
 PCS. BOX 1 98 ■



ANGOLARE - CORNER TILE

727K0R White Nat. Rett.
 727K3R Sand Nat. Rett.
 727K2R Cotto Nat. Rett.
 727K6R Brown Nat. Rett.
 727K8R Grey Nat. Rett.

33x33x3,2x3,2_12^{15/16"}x12^{15/16"}x1^{1/4"}x1^{1/4"}
 PCS. BOX 2 86 ■



BATTISCOPA - SKIRTING

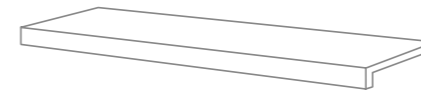
877K0R White Nat. Rett.
 877K3R Sand Nat. Rett.
 877K2R Cotto Nat. Rett.
 877K6R Brown Nat. Rett.
 877K8R Grey Nat. Rett.

7,5x60_2^{15/16"}x23^{5/8"}
 PCS. BOX 15 10 ■



pezzi speciali

20MM



GRADONE - STEP

2G7K0R White Nat. Rett.
 2G7K2R Cotto Nat. Rett.
 2G7K8R Grey Nat. Rett.

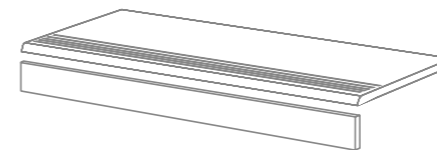
33x120x5_12^{15/16"}x47^{1/4"}x1^{5/16"}
 PCS. BOX 1 97 ■



ANGOLARE DX / SX - CORNER TILE DX / SX

2G7K0RD / 2G7K0RS White Nat. Rett.
 2G7K2RD / 2G7K2RS Cotto Nat. Rett.
 2G7K8RD / 2G7K8RS Grey Nat. Rett.

33x120x5_12^{15/16"}x47^{1/4"}x1^{5/16"}
 PCS. BOX 1 100 ■



GRADINO - STAIR TREAD

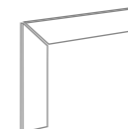
4G7K0R White Nat. Rett.
 4G7K2R Cotto Nat. Rett.
 4G7K8R Grey Nat. Rett.

33x120_12^{15/16"}x47^{1/4"}
 PCS. BOX 1 96 ■

ALZATA - RISER

2T7K0R White Nat. Rett.
 2T7K2R Cotto Nat. Rett.
 2T7K8R Grey Nat. Rett.

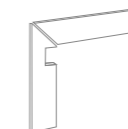
16,5x120_6^{1/2"}x47^{1/4"}
 PCS. BOX 1 71 ■



BATTISCOPA SCALA DX / SX TREAD SKIRTING DX / SX

BA7K0RD / BA7K0RS White Nat. Rett.
 BA7K2RD / BA7K2RS Cotto Nat. Rett.
 BA7K8RD / BA7K8RS Grey Nat. Rett.

7,5x60x60_2^{15/16"}x23^{5/8"}x23^{5/8"}
 PCS. BOX 2 45 ■



BATTISCOPA SCALA DX / SX TREAD SKIRTING DX / SX

BB7K0RD / BB7K0RS White Nat. Rett.
 BB7K2RD / BB7K2RS Cotto Nat. Rett.
 BB7K8RD / BB7K8RS Grey Nat. Rett.

7,5x60x60_2^{15/16"}x23^{5/8"}x23^{5/8"}
 PCS. BOX 2 45 ■



TERMINALE - ENDINGPIECE

3G7K0R White Nat. Rett.
 3G7K2R Cotto Nat. Rett.
 3G7K8R Grey Nat. Rett.

33x120x2,5_12^{15/16"}x47^{1/4"}x1^{5/16"}
 PCS. BOX 1 97 ■



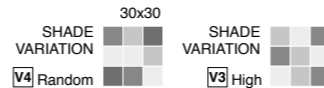
ANGOLO TERMINALE DX / SX - ENDINGPIECE CORNER DX / SX

3G7K0RD / 3G7K0RS White Nat. Rett.
 3G7K2RD / 3G7K2RS Cotto Nat. Rett.
 3G7K8RD / 3G7K8RS Grey Nat. Rett.

33x120x2,5_12^{15/16"}x47^{1/4"}x1^{5/16"}
 PCS. BOX 1 100 ■

| CARATTERISTICHE TECNICHE Technical Features - Caracteristiques Techniques - Technische Eigenschaften Technische Eigenschaften - Características Técnicas - Технические Характеристики | | NORMA Standard - Norme Norm - Norma - Норма | VALORI Value - Valeur Vorgabe - Valor - Средние | | |
|---|--|--|---|------------------------|------------|
| | PLANARITÀ Flatness - Planéité - Ebenflächigkeit - Planaridad - Плоскостность | UNI EN ISO 10545/2 | ± 0,26% / ± 1,5mm | | |
| | | ASTM C485 CALIBRATED ± 0,75% (MAX ± 0,09 IN) | - | | |
| | | ASTM C485 RECTIFIED ± 0,40% (MAX ± 0,05 IN-SIZE ≤ 60cm) (MAX ± 0,07 IN-SIZE > 60cm) | ± 0,25% | | |
| | ASSORBIMENTO D'ACQUA (VALORE MEDIO IN %) Water absorption (Average value expressed in %) - Absorption d'eau (Valeur moyenne en %) Wasseraufnahme (Durchschnittswert in %) - Absorción de agua (Valor medio en %) Поглощение воды | UNI EN ISO 10545/3 ≤ 0,5 % | CONFORME | | |
| | | ASTM C373 | COMPLIANT | | |
| | RESISTENZA ALLA FLESSIONE Modulus of rupture - Resistance a la flexion - Biegefestigkeit Resistencia a la flexion - Прочность на изгиб | UNI EN ISO 10545/4 | NAT./ANTISLIP | 20MM | |
| | | | ≥ 50 N/mm ² | ≥ 50 N/mm ² | |
| | FORZA DI ROTTURA Breaking strength - Résistance à la rupture - Bruchlast Resistencia a la rotura - Разрывное усилие | UNI EN ISO 10545/4 | ≥ 2000 N | ≥ 4000 N | |
| | | | ASTM C648 | 250 LBS | 700 LBS |
| | RESISTENZA AL GELO Frost resistance - Résistance au gel - Frostbeständigkeit - Resistencia a las heladas - Морозостойкость | UNI EN ISO 10545/12 | CONFORME | | |
| | | ASTM C1026 | UNAFFECTED | | |
| | RESISTENZA CHIMICA AD ALTE E BASSE CONCENTRAZIONI DI ACIDI E BASI Chemical resistance to high and low acid and basic concentrations Résistance chimique aux hautes et basses concentrations d'acides et de bases Chemikalienfestigkeit bei hohen und niedrigen Konzentrationen von Säuren und Basen Resistencia química con concentraciones altas y bajas de ácidos y bases Химическая стойкость к высоким и низким концентрациям кислот и щелочей | UNI EN ISO 10545/13 | GA - GLA - GHA | | |
| | | ASTM C-650 | UNAFFECTED | | |
| | RESISTENZA ALLE MACCHIE Stain resistance - Résistance aux taches - Fleckenbeständigkeit Resistencia a las manchas - Стойкость к образованию пятен | UNI EN ISO 10545/14 | 5 | | |
| | | CTI 81-7D | NO EVIDENT VARIATION | | |
| | COEFFICIENTE DI ATTRITO Slip resistance - Coefficient de glissement - Rutschfestigkeit Barfußbereich Coeficiente de atrito medio - Коэффициент трения | DIN 51130 | NATURALE | ANTISLIP/20MM | |
| | | | R10 | R11 | |
| | | | DIN 51097 | B (A+B) | C (A+B+C) |
| | | | ANSI A 137.1 - 2012 DCOF (SECTION 9.6) | WET ≥ 0,42 | WET ≥ 0,42 |
| | | | B.C.R.A. | ≥ 0,40 | ≥ 0,40 |

Per maggiori chiarimenti sui dati tecnici e sulla garanzia consultare il catalogo generale in vigore. - For further information on technical specifications, please consult our up-dated general catalogue. - Pour toutes informations supplémentaires sur les données techniques et sur les garanties, veuillez consulter le catalogue general en vigueur. - Für weitere Informationen über technische Daten und Garantie beziehen sie sich bitte auf den aktuellen Gesamtkatalog. - Para ulteriores informaciones sobre los datos técnicos y la garantía, vease el catalogo general en vigor. - Более подробную информацию о технических данных и гарантии смотрите в действующем сводном катал.



| Articolo Item Reference Artikel Artículo Артикула | Formato (cm) Size (cm) Format (cm) Formato (cm) Formato (cm) | Spessore (mm) Thickness (mm) Epaisseur (mm) Stärke (mm) Espesor (mm) Толщина (mm) | Pz. x Mq. Size (cm) Pcs / M ² Stk. x Qm Pzs x Mc. Шт. x Кв.М. | Pz. x Scat. Pieces x Box Pcs / Bte Stk. x Krt. Pzs x Caja Шт. x Кор. | Mq. x Scat. Sqm x Box M ² / Bte Qm x Krt. Mc. x Caja Кв.М. x Кор. | Peso x Scat. (Kg) Weight x Box (Kg) Poids / Bte (Kg) Gewicht x Krt. (Kg) Peso x Caja (Kg) Вес x Кор. (Kg) | Scat. x Pal. Boxes x Pal. Bte / Pal. Krt. x Pal. Cajas x Pal. Кор. x Подд. | Mq. x Pal. Sqm x Pal. M ² / Pal. Qm x Pal. Mc. x Pal. Кв.М x Подд. | Peso x Pal. (Kg) Weight x Pal. (Kg) Poids / Pal. (Kg) Gewicht x Pal. (Kg) Peso x Pal. (Kg) Вес x Подд (Kg) |
|--|--|--|---|---|---|--|---|--|---|
| 987K_R | 60x120 | 10 | 1,39 | 2 | 1,440 | 36,20 | 22 | 31,68 | 796 |
| 557K_R | 30x120 | 10 | 2,78 | 4 | 1,440 | 34,40 | 36 | 51,84 | 1238 |
| X417K_R | 40x120 | 10 | 2,08 | 1 | 0,480 | 22,50 | 48 | 23,04 | 1080 |
| 807K_R | 80x80 | 10 | 1,56 | 2 | 1,280 | 32,00 | 42 | 53,76 | 1344 |
| 607K_R/RZ | 60x60 | 10 | 2,78 | 3 | 1,080 | 25,00 | 40 | 43,20 | 1000 |
| 637K_SR | 30x60 | 10 | 5,56 | 6 | 1,080 | 25,00 | 40 | 43,20 | 1000 |
| 307K_SR | 30x30 | 10 | 11,11 | 12 | 1,080 | 26,50 | 40 | 43,20 | 1060 |
| Z3077K_ | 30x30 | 10 | 11,11 | 5 | 0,450 | 10,50 | 60 | 27,00 | 630 |



| | |
|--|--|
| Viva Made is a brand of Emilceramica S.r.l. a socio unico | Sede commerciale/amministrativa |
| emilgroup.it/viva emilgroup.it | Via Ghiarola Nuova, 29 - 41042 Fiorano Modenese (Mo) - Italy T +39 0536 835111 - info@emilceramicagroup.it F (Italy) +39 0536 835958 - (Export) +39 0536 835490 |

