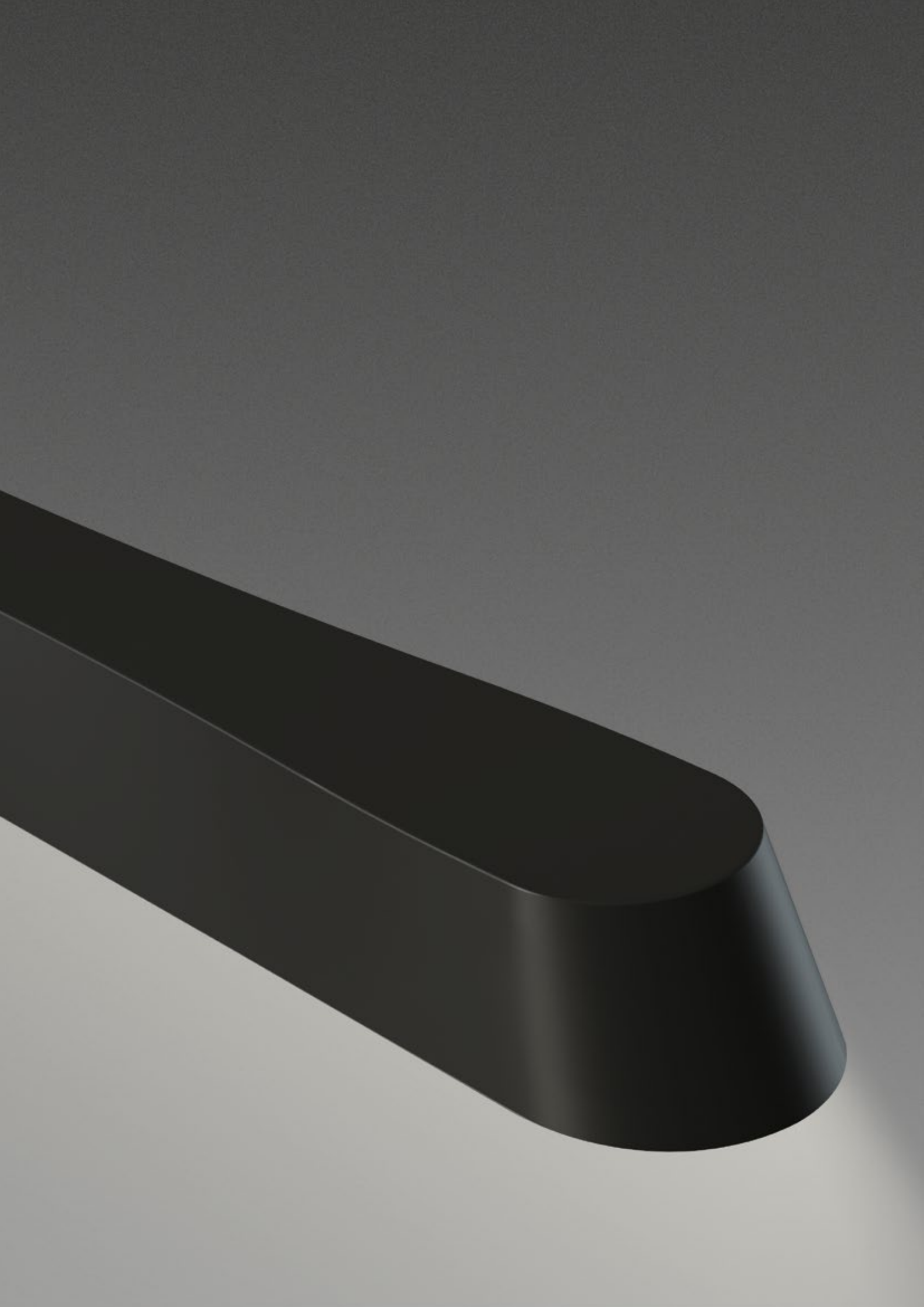
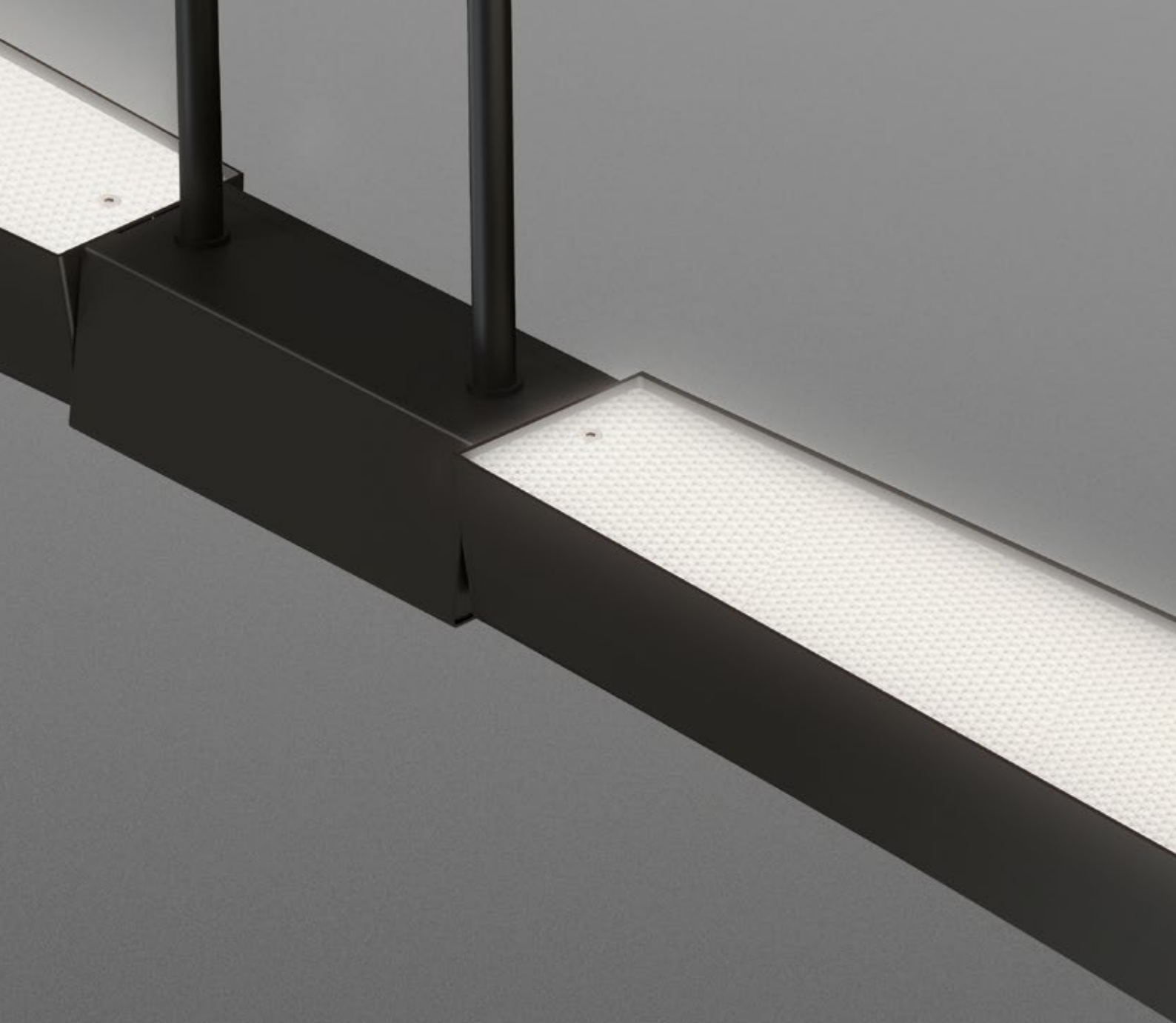




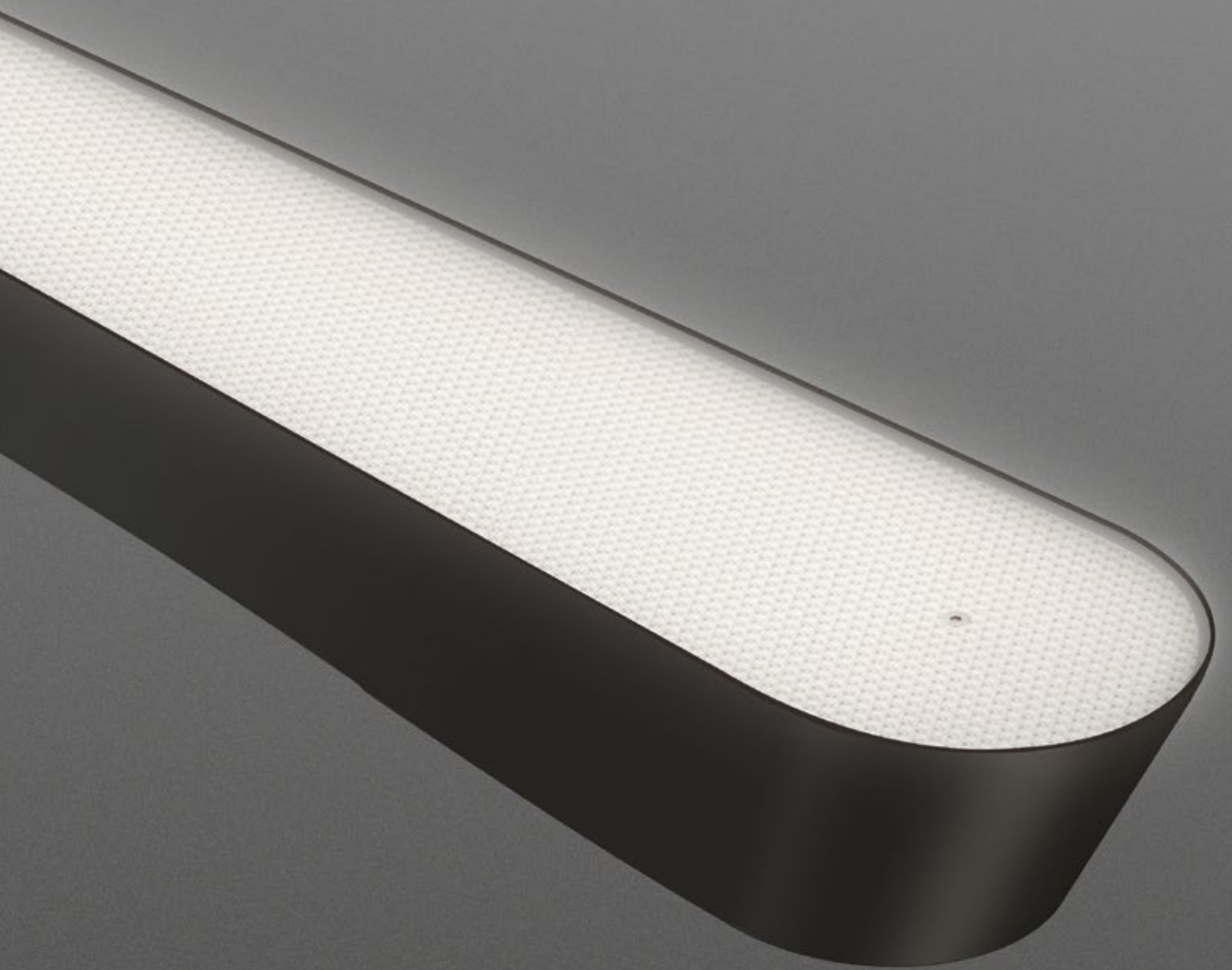
SOTTOMARINO

"In sole due mosse, un balzo di luce."





DIFFUSORE MICROPRISMATO ANTIABBAGLIAMENTO
MICROPRISMATIC ANTI-GLARE DIFFUSER



SOTTOMARINO

design: Aldo Bruno e Arianna Teardo

Sospensione a luce diretta o indiretta. Struttura in metallo ricoperta in ABS. I due corpi illuminanti ruotano di 180° consentendo di orientare il flusso luminoso. Diffusore in metacrilato opale o microprismato antiabbagliamento.

Suspension with direct or indirect light. Structure made in painted metal covered in ABS. The two bodies turn of 180° allowing the direction of the luminous flux. Opal acrylic diffuser or microprismatic anti-glare.

Pendelleuchte, installierbar mit direkter oder indirekter Lichtausstrahlung. Gehäuse aus ABS-beschichtetem Metall. Die beiden Leuchtkörper können um 180° gedreht werden, um den Lichtstrom zu orientieren. Diffusor aus Opal-Methacryl oder mit Miniprismen als Blendschutz.

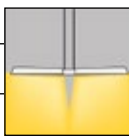
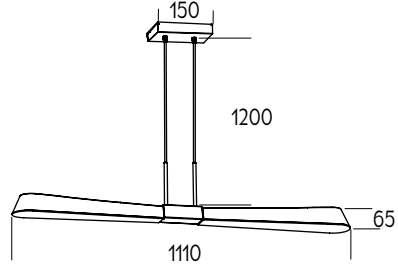




COMPOSIZIONE CODICE / SETTLEMENT CODE

Completare il codice inserendo il numero corrispondente al colore desiderato, nell'apposito spazio  Complete the code by entering the number corresponding to the desired color in the space provided 

COLORI DI SERIE/STANDARD COLORS

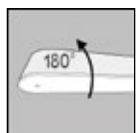

- RAL 9016 - Bianco opaco/Matt white: **1**
- RAL 9005 - Nero opaco/Matt black: **7**

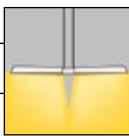
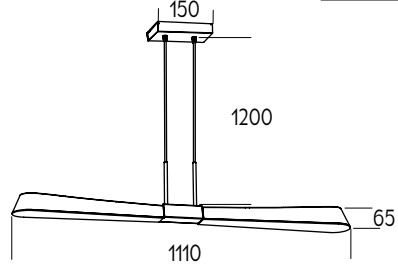




altri colori a richiesta / other color on request

SOTTOMARINO	IP20		VERSIONE	W MAX	LUMEN*	LUMEN/W	CODICE/CODE	
							LED 3000 K	LED 4000 K
			LED ON/OFF	36 W	5200	144	132  .W	132  .N
			LED DM	36 W	5200	144	132  .WD	132  .ND

DIFFUSORE IN METACRILATO OPALE
OPAL ACRYLIC DIFFUSER

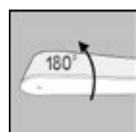

Rotazione, luce indiretta
Rotation, indirect light

SOTTOMARINO/MP	IP20		VERSIONE	W MAX	LUMEN*	LUMEN/W	CODICE/CODE	
							LED 3000 K	LED 4000 K
			LED ON/OFF	36 W	5200	144	133  .W	133  .N
			LED DM	36 W	5200	144	133  .WD	133  .ND

DIFFUSORE MICROPRISMATO ANTIABBAGLIAMENTO
MICROPRISMATIC ANTI-GLARE DIFFUSER

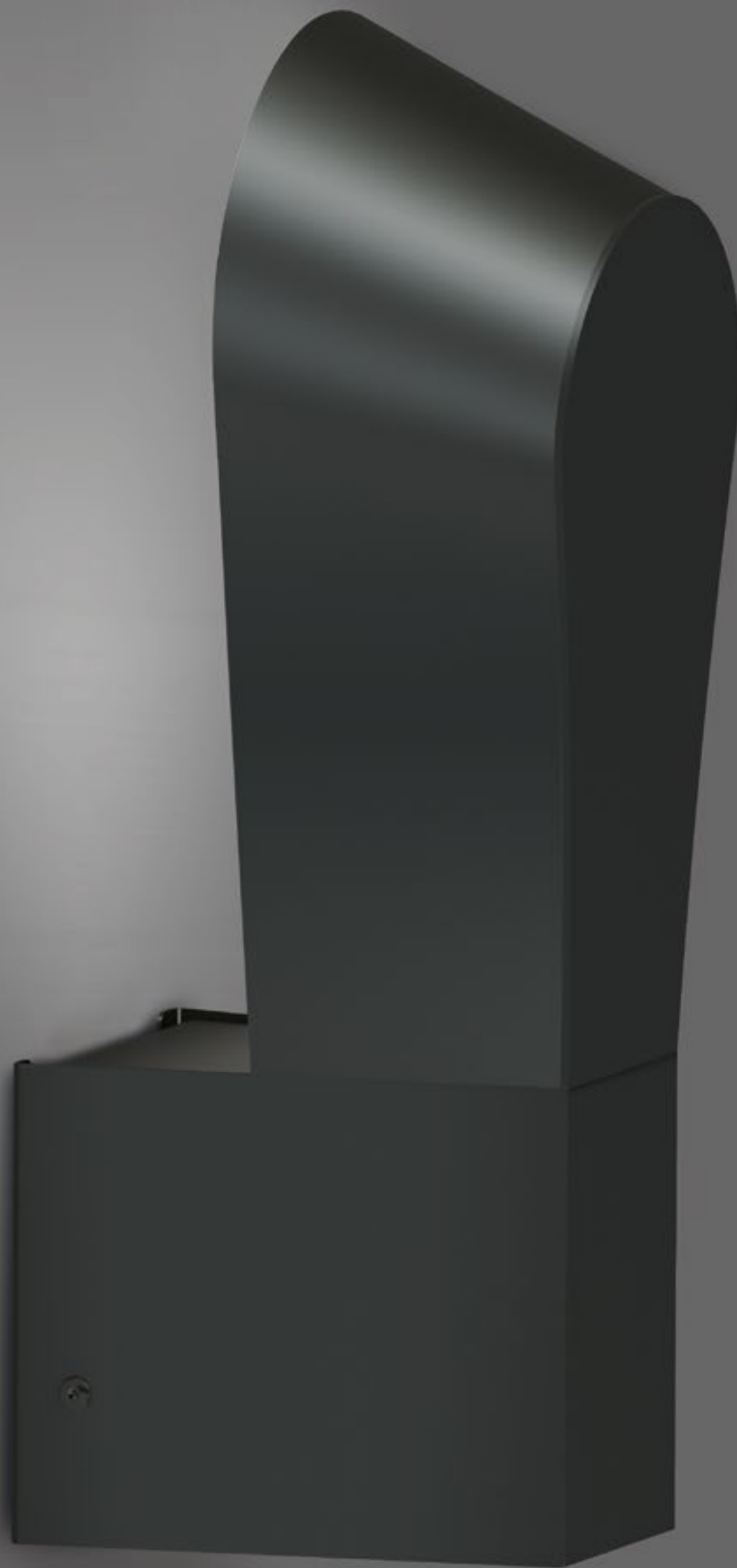
Rotazione, luce indiretta
Rotation, indirect light

* Flusso minimo nominale/Nominal minimum flux

LED DM: dimmerabile DALI/dimmable DALI
dimmerabile push/dimmable push





SOTTOMARINO AP

"Mi guardi o non mi guardi? Allora mi nascondo."


SOTTOMARINO AP design: Aldo Bruno e Arianna Teardo


Applique. Struttura in metallo ricoperta in ABS. La parte illuminante ruota di 180° consentendo di orientare il flusso luminoso. Diffusore in metacrilato opale.

Wall lamp. Structure made in painted metal covered in ABS. The lighted part turns of 180° allowing the direction of the luminous flux. Opale acrylic diffuser.

Wandleuchte. Gehäuse aus ABS-beschichtetem Metall. Der Leuchtkörper kann um 180° gedreht werden, um den Lichtstrom zu orientieren. Diffusor aus Opal-Methacryl.

COMPOSIZIONE CODICE / SETTLEMENT CODE

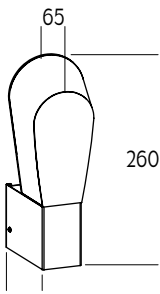
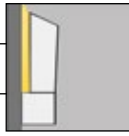


Completare il codice inserendo il numero corrispondente al colore desiderato, nell'apposito spazio 

Complete the code by entering the number corresponding to the desired color in the space provided 

COLORI DI SERIE/STANDARD COLORS

- RAL 9016 - Bianco opaco/Matt white: **1**
- RAL 9005 - Nero opaco/Matt black: **7**

altri colori a richiesta / other color on request

SOTTOMARINO AP IP20		VERSIONE	W MAX	LUMEN*	LUMEN/W	CODICE/CODE	
		LED ON/OFF	12 W	1740	145	LED 3000 K	LED 4000 K
						134  .W	134  .N

Rotazione, luce diretta
Rotation, direct light



* Flusso minimo nominale/Nominal minimum flux