

Pop P07 bi-color

Harbour design 2017

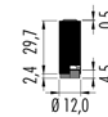
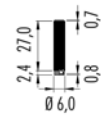
Ceiling item for interior lighting available in two dimensions with diameter cm 6,0 and 12,0, consisting of an upper painted aluminium cylinder and a lower brushed brass cylinder with transparent paint.

Articolo a plafone per interni disponibile nelle misure con Ø 6,0cm e Ø 12,0cm, composto da un cilindro superiore in alluminio verniciato, e da uno inferiore in ottone spazzolato verniciato trasparente.

Deckenartikel für Innen lieferbar in zwei Maße: Durchmesser von 6,0 und 12,0cm. Aus zwei Zylinder zusammengesetzt: ein oberer Zylinder aus lackiertem Aluminium und ein unterer Zylinder aus gebürstet und transparent lackiertem Messing bestehend.

Plafonnier pour intérieur disponible en deux dimensions avec diamètre 6,0 et 12,0cm, composé d'un cylindre extérieur en aluminium verni et d'un cylindre intérieur en laiton brossé et verni transparent.

Plafón para interior disponible en dos dimensiones con diámetro de 6,0 a 12,0cm, compuesto por un cilindro superior en aluminio pintado, y por uno inferior en latón cepillado y pintado transparente.



IP20	©	CE	MC-E=3
220-240V	11W	CRI>85	
P07.3	<input type="checkbox"/> S	dim. IGBT - TRIAC	
Led color	<i>Nominal lm</i>	<i>Beam spread</i>	
2 = 2700 °K	1195	S = 22°	
3 = 3000 °K	1257		
4 = 4000 °K	1313		

IP20	©	CE	MC-E=3
220-240V	18,5W	CRI>85	
P07.5	<input type="checkbox"/> S	dim. IGBT - TRIAC	
P07A5	<input type="checkbox"/> S	dim. DALI	
P07B5	<input type="checkbox"/> S	dim. Push	
P07C5	<input type="checkbox"/> S	dim. 1...10V	
Led color	<i>Nominal lm</i>	<i>Beam spread</i>	
2 = 2700 °K	2176	S = 24°	
3 = 3000 °K	2301		
4 = 4000 °K	2400		

<input type="checkbox"/>	Up	Down	Diffuser color
KS	●	●	Black/Brass - Nero/Ottone
WS	○	●	White/Brass - Bianco/Ottone
BS	●	●	Blue/Brass - Blu/Ottone
GS	●	●	Green/Brass - Verde/Ottone
PS	●	●	Rose/Brass - Rosa/Ottone
RS	●	●	Red/Brass - Rosso/Ottone



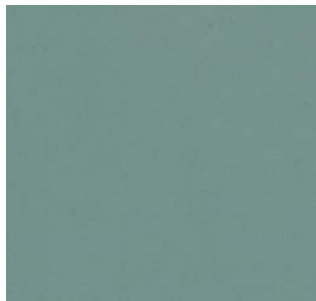
Pop P07 bi-color Ø 6,0



Red/Rosso



Rose/Rosa



Green/Verde



Blue/Blu



Brass/Ottone



Copper/Rame

The colour rendering of these samples is approximate, not being possible to faithfully reproduce by offset printing.

I campioni colore sono solamente indicativi, non essendo possibile la riproduzione fedele a mezzo stampa offset.

Durch den Offset-Druck sind leichte Farbabweichungen der hier gezeigten Muster möglich.

Les échantillons de couleurs sont indicatifs, l'impression papier ne permettant pas une reproduction fidèle.

Las muestras de color son sólo indicativas, no siendo posible una reproducción fiel mediante impresión en papel.

Ⓐ Alimentatore incluso
control gear included
Vorschaltgerät mitgeliefert
platine d'alimentation fournie
alimentador incluido

Ⓒ Converter incluso
Converter included
Konverter mitgeliefert
Convertisseur fourni
Convertidor incluido

Ⓕ Lampadina inclusa
including bulb
Leuchtmittel inklusiv
ampoule comprise
bombilla incluida

Ⓓ Trasformatore incluso
transformer included
Trafo mitgeliefert
transformateur fournie
transformador incluido

Ⓐ Alimentatore non incluso
control gear not included
Vorschaltgerät nicht mitgeliefert
platine d'alimentation non fournie
alimentador excluido

Ⓒ Converter non incluso
Converter not included
Konverter nicht mitgeliefert
Convertisseur non fourni
Convertidor excluido

Ⓕ Lampadina non inclusa
Bulb not included
Leuchtmittel nicht mitgeliefert
Ampoule non fourni
Bombilla excluida

Ⓓ Trasformatore non incluso
transformer not included
Trafo nicht mitgeliefert
transformateur non fournie
transformador excluido

IP identification

IP2X protezione contro corpi estranei ≥ 12mm
protection against solid objects ≥ 12mm
Schutz gegen Fremdkörpern ≥ 12 mm
protection contre des corps étrangers ≥ 12mm
protegido contra objetos extraños ≥ 12mm

IP4X protection against solid objects ≥ 1mm
protezione contro corpi estranei ≥ 1mm
Schutz gegen Fremdkörpern ≥ 1mm
protection contre des corps étrangers ≥ 1mm
protegido contra objetos extraños ≥ 1mm

IPX0 nessuna protezione
no protection
kein Schutz
non protégé
sin protección

“Creativity is inventing, experimenting, growing, taking risks, breaking rules, making mistakes, and having fun.”

Mary L. Cook