



WING PENDANT

PRODUCT SHEET



REF. 10200.PN

FEATURES

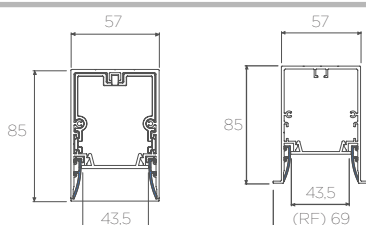
- IP: 43
- Installation: Pendant
- High: 85 mm
- Light Direction: Fixed
- Minimum distance to lightened objects: 0.5 m
- Lamps : LED
- Protection class: Class I
- Indirect light: Optional

LED MODULES

STANDARD POWER - HIGH POWER

- Efficiency 3K: 132 lm/W
- Efficiency 4K: 136 lm/W
- Energy efficiency : A++
- Driver: Included
- Life time: 50.000h
- LED working constant current: 350mA
- Color rendering current: CRI ≥80
- LED Guarantee: 5 years

MEASURES



FINISH



CENTRAL FINISH



OPTIC COVER

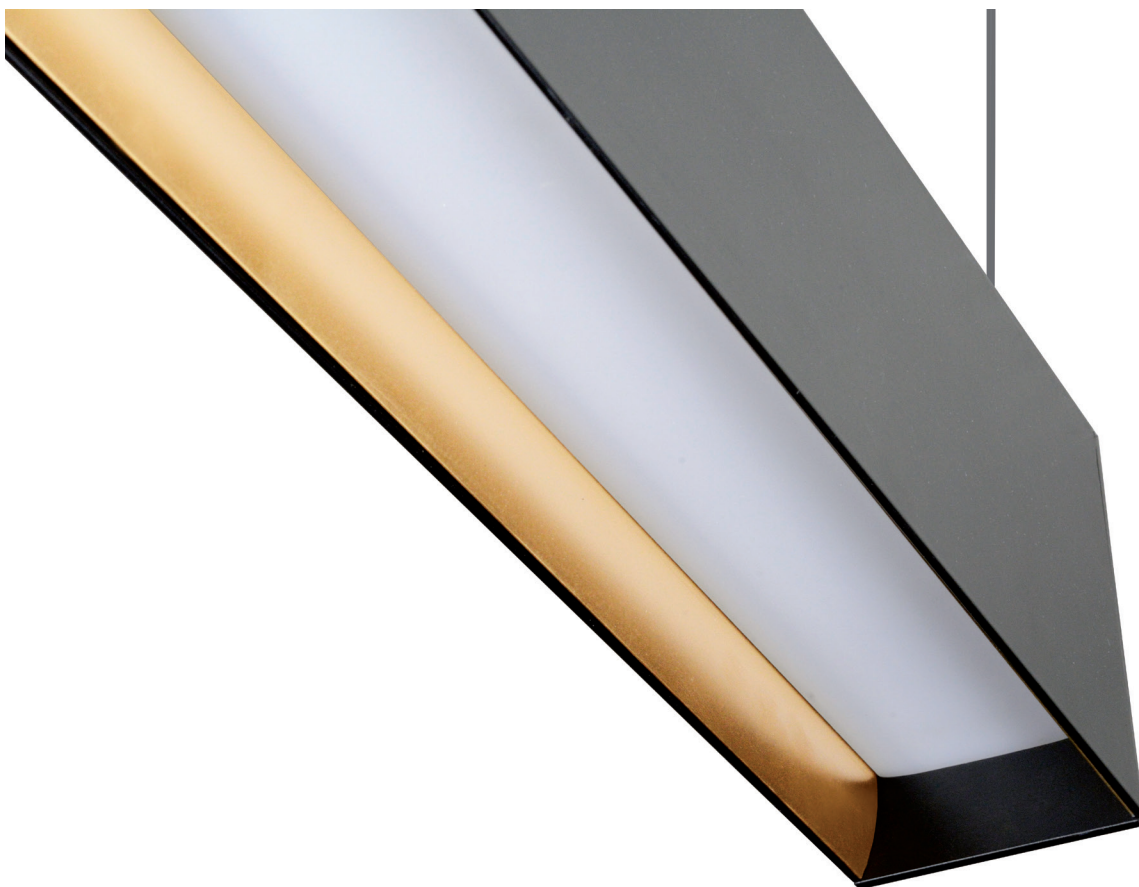


- OPAL
- ICE
- MICROPRISMATIC

DIMMABLE OPTIONS

- 1.10V
- PUSH
- DALI





Date: _____

Company: _____

Project: _____

Quantity: _____

Features: _____



Partida Madrigueres Sud 11
03700 DENIA (Alicante) SPAIN
TEL.0034-965 781 218

www.bpmlighting.com