

Berker W.1

Rest assured: The Berker W.1, tested in accordance with protection rating IP55, always makes a good impression. The switch has won multiple awards for its design, being not only extremely hard-wearing but also waterproof – and having an optional LED light ring.



	Page
W.1 - SCHUKO socket outlets with hinged cover	3
W.1 - Multiple SCHUKO socket outlets with hinged cover	5
W.1 International outlet systems	8
W.1 - Switches / Push-buttons	9
W.1 - Combinations	12
W.1 - Blind switches	13
W.1 - Heating emergency switches	14
W.1 - Communication / multimedia technology	15
W.1 - Modular system	17
W.1 - Supplementary products	26



47403515

IP55

SCHUKO socket outlet with hinged cover surface-mounted

Description	P.U.	Price Group	Price	Art No.
SCHUKO socket outlet with hinged cover surface-mount. Berker W.1, grey/light grey matt	10		on demand	47403515
SCHUKO socket outlet with hinged cover surface-mounted Berker W.1, polar white matt	1		on demand	47403512
SCHUKO socket outlet with red hinged cover surface-mounted with labelling field, with screw-in lift terminals, Berker W.1, grey/light grey matt	1		on demand	47403521
SCHUKO socket outlet with green hinged cover surface-mounted Berker W.1, grey/light grey matt	1		on demand	47403523
SCHUKO socket outlet with yellow hinged cover surface-mounted Berker W.1, grey/light grey matt	1		on demand	47403524
SCHUKO socket outlet with orange hinged cover surface-mounted Berker W.1, grey/light grey matt	1		on demand	47403527
SCHUKO socket outlet w. green hing. cov. and symbol Berker W.1, grey/light grey matt	1		on demand	47403533



47633505



IP55

SCHUKO socket outlet with hinged cover surface-mounted - enhanced contact protection

Description	P.U.	Price Group	Price	Art No.
SCHUKO socket outlet with hinged cover surface-mounted with enhanced touch protection, Berker W.1, grey/light grey matt	10		on demand	47633505
SCHUKO socket outlet with hinged cover surface-mounted with enhanced touch protection, Berker W.1, polar white matt	1		on demand	47633502



47413515



SCHUKO socket outlet with hinged cover surface-mounted - labelling field

Description	P.U.	Price Group	Price	Art No.
SCHUKO socket outlet with hinged cover surface-mounted with labelling field, Berker W.1, grey/light grey matt	10		on demand	47413515
SCHUKO socket outlet with hinged cover surface-mounted Labelling field, Berker W.1, polar white matt	1		on demand	47413512

SCHUKO socket outlet with hinged cover surface-mounted - labelling field - lock - differing closures - enhanced contact protection

Description	P.U.	Price Group	Price	Art No.
SCHUKO socket outlet with hinged cover surface-mounted with labelling field, Lock - differing lockings, enhanced contact protection, Berker W.1	1		on demand	47393505
SCHUKO socket outlet with hinged cover surface-mounted with labelling field, with enhanced touch protection, enhanced contact protection, Berker W.1, polar white matt	1		on demand	47693502



47393505



IP55

SCHUKO socket outlet with hinged cover surface-mounted - labelling field - lock - identical closures - enhanced contact protection

Description	P.U.	Price Group	Price	Art No.
SCHUKO socket outlet with hinged cover surface-mounted with labelling field, Lock - identical lockings, enhanced contact protection, Berker W.1	1		on demand	47893505
SCHUKO socket outlet with hinged cover surface-mounted with labelling field, Lock - identical lockings, enhanced contact protection, Berker W.1, polar white matt	1		on demand	47893502



47893505



IP55

Socket with earthing pin Folding lid

Description	P.U.	Price Group	Price	Art No.
SCHUKO socket outlet insert with hinged cover surface-mounted/flush-mounted Berker W.1, polar white matt	1		on demand	47063522
SCHUKO socket outlet insert with hinged cover surface-mounted/flush-mounted Berker W.1	10		on demand	47063525



47063522





47703525

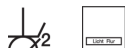
IP55

SCHUKO socket outlet 2gang vertical with hinged cover surface-mounted

Description	P.U.	Price Group	Price	Art No.
SCHUKO socket outlet 2gang vertical with hinged cover surface-mounted Berker W.1, grey/light grey matt	5		on demand	47703525
SCHUKO socket outlet 2gang vertical with hinged cover surface-mounted Berker W.1, polar white matt	1		on demand	47703522
Combination change-over switch/SCHUKO socket outlet with hinged cover surface-mounted with enhanced touch protection, Berker W.1, polar white matt	1		on demand	47803522
Combination change-over switch/SCHUKO socket outlet with hinged cover surface-mounted with enhanced touch protection, Berker W.1	5		on demand	47803525
Combination series switch/SCHUKO socket outlet with hinged cover surface-mounted with enhanced touch protection, Berker W.1, polar white matt	1		on demand	47903522
Combination series switch/SCHUKO socket outlet with hinged cover surface-mounted with enhanced touch protection, Berker W.1	5		on demand	47903525



47703535



IP55

SCHUKO socket outlet 2gang vertical with hinged cover surface-mounted - labelling field

Description	P.U.	Price Group	Price	Art No.
SCHUKO socket outlet 2gang vertical with hinged cover surface-mounted with labelling field, Berker W.1, grey/light grey matt	5		on demand	47703535
SCHUKO socket outlet 2gang vertical with hinged cover surface-mounted with labelling field, Berker W.1, polar white matt	1		on demand	47703532

SCHUKO socket outlet 2gang horizontal with hinged cover surface-mounted

Description	P.U.	Price Group	Price	Art No.
SCHUKO socket outlet 2gang horizontal with hinged cover surface-mounted Berker W.1, grey/light grey matt	5		on demand	47843515
SCHUKO socket outlet 2gang horizontal with hinged cover surface-mounted Berker W.1, polar white matt	1		on demand	47843512
SCHUKO socket outlet 2gang horizontal with hinged cover surface-mounted with enhanced touch protection, Berker W.1, polar white matt	1		on demand	47753542
SCHUKO socket outlet 2gang horizontal with hinged cover surface-mounted with enhanced touch protection, Berker W.1	5		on demand	47753545
SCHUKO socket outlet 2gang horizontal with hinged cover surface-mounted with labelling field, enhanced contact protection, Berker W.1, polar white matt	1		on demand	47753552
SCHUKO socket outlet 2gang horizontal with hinged cover surface-mounted with labelling field, enhanced contact protection, Berker W.1	5		on demand	47753555
SCHUKO socket outlet 2gang horizontal with hinged cover surface-mounted with enhanced touch protection, Berker W.1, polar white matt	1		on demand	47843532
SCHUKO socket outlet 2gang horizontal with hinged cover surface-mounted with enhanced touch protection, Berker W.1	5		on demand	47843535



47843515



IP55

SCHUKO socket outlet 2gang horizontal with hinged cover surface-mounted

Description	P.U.	Price Group	Price	Art No.
SCHUKO socket outlet 2gang horizontal with hinged cover surface-mounted Berker W.1, grey/light grey matt	5		on demand	47753525
SCHUKO socket outlet 2gang horizontal with hinged cover surface-mounted Berker W.1, polar white matt	1		on demand	47753522



47753525



IP55

SCHUKO socket outlet 2gang horizontal with hinged cover surface-mounted - labelling field

Description	P.U.	Price Group	Price	Art No.
SCHUKO socket outlet 2gang horizontal with hinged cover surface-mounted with labelling field, Berker W.1, grey/light grey matt	5		on demand	47753535
SCHUKO socket outlet 2gang horizontal with hinged cover surface-mounted with labelling field, Berker W.1, polar white matt	1		on demand	47753532



47753535



IP55

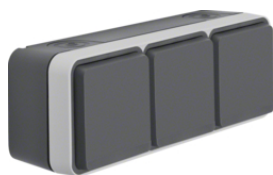
**SCHUKO socket outlet 2gang horizontal with hinged cover surface-mounted - labelling field - lock - differing closures - enhanced contact protection**

Description	P.U.	Price Group	Price	Art No.
SCHUKO socket outlet 2gang horizontal with hinged cover surface-mounted with labelling field, Locks - differing lockings, enhanced contact protection, Berker W.1	5		on demand	47893525
SCHUKO socket outlet 2gang horizontal with hinged cover surface-mounted with labelling field, Locks - differing lockings, enhanced contact protection, Berker W.1, polar white matt	1		on demand	47893522

47893525



IP55

**SCHUKO socket outlet 3gang horizontal with hinged cover surface-mounted**

Description	P.U.	Price Group	Price	Art No.
SCHUKO socket outlet 3gang horizontal with hinged cover surface-mounted Berker S.1/B.3/B.7, grey/light grey matt	1		on demand	47733515
SCHUKO socket outlet 3gang horizontal with hinged cover surface-mounted Berker S.1/B.7, polar white matt	1		on demand	47733512

47733515



IP55

French Socket outlets

Description	P.U.	Price Group	Price	Art No.
Socket outlet with earthing pin and hinged cover surface-mounted enhanced contact protection, Berker W.1, polar white matt	1		on demand	6768813512
Socket outlet with earthing pin and hinged cover surface-mounted enhanced contact protection, Berker W.1, grey/light grey matt	10		on demand	6768813515
Socket outlet with earthing pin and hinged cover surface-mounted with labelling field, enhanced contact protection, Berker W.1, polar white matt	1		on demand	6768813522
Socket outlet with earthing pin and hinged cover surface-mounted with labelling field, enhanced contact protection, Berker W.1, grey/light grey matt	10		on demand	6768813525
Double socket outlet with earthing pin and hinged cover surface-mounted Berker W.1, polar white matt	1		on demand	6768823512
Double socket outlet with earthing pin and hinged cover surface-mounted Berker W.1, grey/light grey matt	5		on demand	6768823515
Double socket outlet with earthing pin and hinged cover surface-mounted Berker W.1, polar white matt	1		on demand	6768823522
Double socket outlet with earthing pin and hinged cover surface-mounted Berker W.1, grey/light grey matt	5		on demand	6768823525
3gang socket outlet with earthing pin and hinged cover surface-mounted with screw-in lift terminals, Berker W.1, polar white matt	1		on demand	6768833512
3gang socket outlet with earthing pin and hinged cover surface-mounted with screw-in lift terminals, Berker W.1, grey/light grey matt	1		on demand	6768833515



6768813512

IP55



30763505

IP55

Change-over/intermediate switch surface-mounted

Description	P.U.	Price Group	Price	Art No.
Change-over switch surface-mounted Berker W.1, grey/light grey matt	10		on demand	30763505
Change-over switch surface-mounted Berker W.1, polar white matt	1		on demand	30763502
Intermediate switch surface-mounted Berker W.1, grey/light grey matt	10		on demand	30773505
Intermediate switch surface-mounted Berker W.1, polar white matt	1		on demand	30773502



30763555



IP55

Change-over switch surface-mounted - labelling field - illuminated

Description	P.U.	Price Group	Price	Art No.
Change-over switch surface-mounted with labelling field - illuminated, Berker W.1, grey/light grey matt	10		on demand	30763555
Change-over switch surface-mounted with labelling field - illuminated, Berker W.1, polar white matt	1		on demand	30763552



30763525



IP55

Illuminated change-over switch surface-mounted - lens

Description	P.U.	Price Group	Price	Art No.
Illuminated change-over switch surface-mounted with lens, Berker W.1, grey/light grey matt	10		on demand	30763525
Illuminated change-over switch surface-mounted with lens, Berker W.1, polar white matt	1		on demand	30763522



31763505



IP55

Control change-over switch surface-mounted - lens

Description	P.U.	Price Group	Price	Art No.
Control change-over switch surface-mounted with lens, Berker W.1	10		on demand	31763505
Control change-over switch surface-mounted with lens, Berker W.1, polar white matt	1		on demand	31763502

Push-button, change-over contact, illuminated, surface-mounted - lens

Description	P.U.	Price Group	Price	Art No.
Push-button change-over contact, illuminated surface-mounted with lens, Berker W.1, grey/light grey matt	10		on demand	50763505
Push-button change-over contact, illuminated surface-mounted with lens, Berker W.1, polar white matt	1		on demand	50763502
Push-button, NO contact surface-mounted Berker W.1, polar white matt	1		on demand	50453522
Push-button, NO contact surface-mounted Berker W.1	10		on demand	50453525



50763505

IP55

Push-button, change-over contact surface-mounted - labelling field - illuminated

Description	P.U.	Price Group	Price	Art No.
Push-button, change-over contact surface-mounted with labelling field - illuminated, Berker W.1, grey/light grey matt	10		on demand	50763555
Push-button, change-over contact surface-mounted with labelling field - illuminated, Berker W.1, polar white matt	1		on demand	50763552



50763555

IP55

On/off switch 2pole with imprint "0" and "I" surface-mounted

Description	P.U.	Price Group	Price	Art No.
On/off switch 2pole with imprint "0" and "I" surface-mounted Berker W.1, grey/light grey matt	10		on demand	30723505
On/off switch 2pole with imprint "0" and "I" surface-mounted Berker W.1, polar white matt	1		on demand	30723502



30723505



IP55

Series switch surface-mounted

Description	P.U.	Price Group	Price	Art No.
Series switch surface-mounted Berker W.1, grey/light grey matt	10		on demand	30753505
Series switch surface-mounted Berker W.1, polar white matt	1		on demand	30753502



30753505



IP55



50753515

IP55

Series push-button, 2 change-over contacts surface-mounted, isolated input terminals

Description	P.U.	Price Group	Price	Art No.
Series push-button, 2 change-over contacts surface-mounted, isolated input terminals Berker W.1, grey/light grey matt	10		on demand	50753515
Series push-button, 2 change-over contacts surface-mounted, isolated input terminals Berker W.1, polar white matt	1		on demand	50753512
Blind series push-button with imprinted symbol arrow surface-mounted Berker W.1, polar white matt	1		on demand	50753502
Blind series push-button with imprinted symbol arrow surface-mounted Berker W.1, grey/light grey matt	1		on demand	50753505



32713505



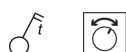
IP55

Key change-over switch with imprint surface-mounted, isolated input terminals - lock - differing closures - key can be removed in 2 positions

Description	P.U.	Price Group	Price	Art No.
Key change-over switch with imprint surface-mounted, isolated input terminals Lock - differing lockings, Key can be removed in 2 positions, Berker W.1, grey/light grey matt	1		on demand	32713505
Key change-over switch with imprint surface-mounted, isolated input terminals Lock - differing lockings, Key can be removed in 2 positions, Berker W.1, polar white matt	1		on demand	32713502



42273512



IP55

Mechanical timer setting knob

Description	P.U.	Price Group	Price	Art No.
Mechanical timer 15 min surface-mounted with setting knob, Berker W.1, polar white matt	1		on demand	42273512
Mechanical timer 15 min surface-mounted with setting knob, Berker W.1	1		on demand	42273515

Combination change-over switch/SCHUKO socket outlet with hinged cover surface-mounted

Description	P.U.	Price Group	Price	Art No.
Combination change-over switch/SCHUKO socket outlet with hinged cover surface-mounted Berker W.1, grey/light grey matt	5		on demand	47803515
Combination change-over switch/SCHUKO socket outlet with hinged cover surface-mounted Berker W.1, polar white matt	1		on demand	47803512



47803515

IP55

Combination series switch/SCHUKO socket outlet with hinged cover surface-mounted

Description	P.U.	Price Group	Price	Art No.
Combination series switch/SCHUKO socket outlet with hinged cover surface-mounted Berker W.1, grey/light grey matt	5		on demand	47903515
Combination series switch/SCHUKO socket outlet with hinged cover surface-mounted Berker W.1, polar white matt	1		on demand	47903512



47903515



IP55



30753525



IP55

Blind series switch 1 pole with imprinted symbol arrow surface-mounted

Description	P.U.	Price Group	Price	Art No.
Blind series switch 1 pole with imprinted symbol arrow surface-mounted Berker W.1, grey/light grey matt	1		on demand	30753525
Blind series switch 1 pole with imprinted symbol arrow surface-mounted Berker W.1, polar white matt	1		on demand	30753522



32723515



IP44

Key switch for blinds with imprint surface-mounted, isolated input terminals - lock - differing closures - key can be removed in 3 positions

Description	P.U.	Price Group	Price	Art No.
Key switch for blinds with imprint surface-mounted, isolated input terminals with lock - differing lockings, Key can be removed in 3 positions, Berker W.1, grey/light grey matt	1		on demand	32723515
Key switch for blinds with imprint surface-mounted, isolated input terminals with lock - differing lockings, Key can be removed in 3 positions, Berker W.1, polar white matt	1		on demand	32723512

Control change-over switch with imprint "Heizung Notschalter" surface-mounted - lens

Description	P.U.	Price Group	Price	Art No.
Change-over switch with imprint "Heizung" surface-mounted with lens, Berker W.1, grey/light grey matt	1		on demand	35663505
Change-over switch with imprint "Heizung" surface-mounted with lens, Berker W.1, polar white matt	1		on demand	35663502



35663505



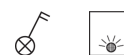
IP55

Control on/off switch, 2pole with imprint "Heizung Notschalter - 0 - I" surface-mounted - lens

Description	P.U.	Price Group	Price	Art No.
Control on/off switch 2pole with imprint "Heizung - 0 - I" surface-mounted with lens, Berker W.1, grey/light grey matt	1		on demand	35623505
Control on/off switch 2pole with imprint "Heizung - 0 - I" surface-mounted with lens, Berker W.1, polar white matt	1		on demand	35623502



35623505



IP55



14093505



IP55

FCC socket outlet 8pole shielded with hinged cover surface-mounted, cat.6 - labelling field

Description	P.U.	Price Group	Price	Art No.
FCC socket outlet 8pole shielded with hinged cover surface-mounted, cat.6 with labelling field, Berker W.1, grey/light grey, matt	1		on demand	14093505
FCC socket outlet 8pole shielded with hinged cover surface-mounted, cat.6 with labelling field, Berker W.1, polar white matt	1		on demand	14093502



12033515



IP55

Aerial socket, 2hole with hinged cover surface-mounted, single socket

Description	P.U.	Price Group	Price	Art No.
Aerial socket 2hole with hinged cover surface-mounted, single socket Berker W.1, grey/light grey matt	1		on demand	12033515
Aerial socket 2hole with hinged cover surface-mounted, single socket Berker W.1, polar white matt	1		on demand	12033512



12033525



IP55

Aerial socket, 2hole with hinged cover surface-mounted, throughpass socket

Description	P.U.	Price Group	Price	Art No.
Aerial socket 2hole with hinged cover surface-mounted, throughpass socket Berker W.1, grey/light grey matt	1		on demand	12033525
Aerial socket 2hole with hinged cover surface-mounted, throughpass socket Berker W.1, polar white matt	1		on demand	12033522



12033535



IP55

Aerial socket, 3hole with hinged cover surface-mounted, single socket

Description	P.U.	Price Group	Price	Art No.
Aerial socket 3hole with hinged cover surface-mounted, single socket Berker W.1, grey/light grey matt	1		on demand	12033535
Aerial socket 3hole with hinged cover surface-mounted, single socket Berker W.1, polar white matt	1		on demand	12033532

Loudspeaker connector box with hinged cover surface-mounted - labelling field

Description	P.U.	Price Group	Price	Art No.
Loudspeaker connector box with hinged cover surface-mounted with labelling field, Berker W.1, grey/light grey, matt	1		on demand	11963505
Loudspeaker connector box with hinged cover surface-mounted with labelling field, Berker W.1, polar white matt	1		on demand	11963502



11963505



IP55

Stereo loudspeaker connector box with hinged cover surface-mounted - labelling fields

Description	P.U.	Price Group	Price	Art No.
Stereo loudspeaker connector box with hinged cover surface-mounted with labelling fields, Berker W.1, grey/light grey matt	1		on demand	11963515
Stereo loudspeaker connector box with hinged cover surface-mounted with labelling fields, Berker W.1, polar white matt	1		on demand	11963512



11963515



IP55



47063515


SCHUKO socket outlet insert with hinged cover surface-mounted/flush-mounted - enhanced contact protection

Description	P.U.	Price Group	Price	Art No.
SCHUKO socket outlet insert with hinged cover surface-mounted/flush-mounted with enhanced touch protection, Berker W.1, grey matt	10		on demand	47063515
SCHUKO socket outlet insert with hinged cover surface-mounted/flush-mounted with enhanced touch protection, Berker W.1, polar white matt	1		on demand	47063512



6768803515

Socket outlet insert with earthing pin and hinged cover surface-mounted/flush-mounted - enhanced contact protection

Description	P.U.	Price Group	Price	Art No.
Socket outlet insert with earthing pin and hinged cover surface-mounted/flush-mounted with enhanced touch protection, Berker W.1, grey matt	10		on demand	6768803515
Socket outlet insert with earthing pin and hinged cover surface-mounted/flush-mounted with enhanced touch protection, Berker W.1, polar white matt	1		on demand	6768803512
Socket outlet with earthing pin and red hinged cover surface-mounted Berker W.1	1		on demand	6745643501
Socket outlet with earthing pin and green hinged cover surface-mounted Berker W.1	1		on demand	6745643503
Socket outlet with earthing pin and yellow hinged cover surface-mounted Berker W.1	1		on demand	6745643504
Socket outlet with earthing pin and orange hinged cover surface-mounted Berker W.1	1		on demand	6745643507
Socket outlet with earthing pin and green hinged cover and imprinted symbol e-bike surface-mounted Berker W.1	10		on demand	6745643513
Socket outlet with earthing pin surface-mounted with enhanced touch protection, Screw terminals, Surface-mounted, white glossy	10		on demand	67600640



6130763515

Change-over/intermediate switch insert surface-mounted/flush-mounted

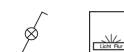
Description	P.U.	Price Group	Price	Art No.
Change-over switch insert with rocker surface-mounted/flush-mounted Berker W.1, grey matt	10		on demand	6130763515
Change-over switch insert with rocker surface-mounted/flush-mounted Berker W.1, polar white matt	1		on demand	6130763512
Intermediate switch insert with rocker surface-mounted/flush-mounted Berker W.1, grey matt	10		on demand	6130773515
Intermediate switch insert with rocker surface-mounted/flush-mounted Berker W.1, polar white matt	1		on demand	6130773512

Change-over switch insert with rocker surface-mounted/flush-mounted - labelling field - illuminated

Description	P.U.	Price Group	Price	Art No.
Change-over switch insert with rocker surface-mounted/flush-mounted with labelling field - illuminated, Berker W.1, grey matt	10		on demand	30863535
Change-over switch insert with rocker surface-mounted/flush-mounted with labelling field - illuminated, Berker W.1, polar white matt	1		on demand	30863532



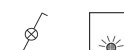
30863535


Change-over switch insert with rocker, illuminated surface-mounted/flush-mounted - lens

Description	P.U.	Price Group	Price	Art No.
Illuminated change-over switch insert with rocker surface-mounted/flush-mounted with lens, Berker W.1, grey matt	10		on demand	30863525
Illuminated change-over switch insert with rocker surface-mounted/flush-mounted with lens, Berker W.1, polar white matt	1		on demand	30863522



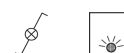
30863525


Control change-over switch insert, rocker surface-mounted/flush-mounted - lens

Description	P.U.	Price Group	Price	Art No.
Control change-over switch insert, rocker surface-mounted/flush-mounted with lens, Berker W.1, grey matt	10		on demand	30863515
Control change-over switch insert, rocker surface-mounted/flush-mounted with lens, Berker W.1, polar white matt	1		on demand	30863512



30863515


Push-button insert with rocker, surface-mounted/flush-mounted

Description	P.U.	Price Group	Price	Art No.
Push-button insert, NO contact with rocker surface-mounted/flush-mounted Berker W.1	10		on demand	50453515
Push-button insert, NO contact with rocker surface-mounted/flush-mounted Berker W.1, polar white matt	1		on demand	50453512
Push-button insert, NO contact with rocker surface-mounted/flush-mounted Berker W.1, grey, matt	10		on demand	50463515
Push-button insert, NO contact with rocker surface-mounted/flush-mounted Berker W.1, polar white matt	1		on demand	50463512



50453515



50463525

**Push-button insert, change-over contact, illuminated surface-mounted/flush-mounted - lens**

Description	P.U.	Price Group	Price	Art No.
Push-button insert, change-over contact, illuminated surface-mounted/flush-mounted with lens, Berker W.1, grey matt	10		on demand	50463525
Push-button insert, change-over contact, illuminated surface-mounted/flush-mounted with lens, Berker W.1, polar white matt	1		on demand	50463522



50413515

**Push-button insert, NO contact with rocker surface-mounted/flush-mounted - labelling field - illuminated**

Description	P.U.	Price Group	Price	Art No.
Push-button insert, NO contact with rocker surface-mounted/flush-mounted with labelling field - illuminated, Berker W.1, grey matt	10		on demand	50413515
Push-button insert, NO contact with rocker surface-mounted/flush-mounted with labelling field - illuminated, Berker W.1, polar white matt	1		on demand	50413512



30423515

**On/off switch insert 2pole with rocker and imprint "0" and "1" surface-mounted/flush-mounted**

Description	P.U.	Price Group	Price	Art No.
On/off switch insert 2pole with rocker and imprint "0" and "1" surface-mounted/flush-mounted Berker W.1, grey matt	10		on demand	30423515
On/off switch insert 2pole with rocker and imprint "0" and "1" surface-mounted/flush-mounted Berker W.1, polar white matt	1		on demand	30423512



30553515

**Series switch insert with rocker 2gang surface-mounted/flush-mounted, common input terminal**

Description	P.U.	Price Group	Price	Art No.
Series switch insert with rocker 2gang surface-mounted/flush-mounted, common input terminal Berker W.1, grey matt	10		on demand	30553515
Series switch insert with rocker 2gang surface-mounted/flush-mounted, common input terminal Berker W.1, polar white matt	1		on demand	30553512

Double change-over switch insert with rocker 2gang surface-mounted/flush-mounted, isolated input terminals

Description	P.U.	Price Group	Price	Art No.
Double change-over switch insert with rocker 2gang surface-mounted/flush-mounted, isolated input terminals Berker W.1	10		on demand	30483515
Double change-over switch insert with rocker 2gang surface-mounted/flush-mounted, isolated input terminals Berker W.1, polar white matt	1		on demand	30483512



30483515

Series push-button insert, 2 NO contacts with rocker 2gang surface-mounted/flush-mounted common input terminal

Description	P.U.	Price Group	Price	Art No.
Series push-button insert, 2 NO contacts with rocker 2gang surface-mounted/flush-mounted common input terminal Berker W.1, grey matt	10		on demand	50423515
Series push-button insert, 2 NO contacts with rocker 2gang surface-mounted/flush-mounted common input terminal Berker W.1, polar white matt	1		on demand	50423512
Blind series push-button insert with rocker 2gang with imprinted symbol arrow surface-mounted/flush-mounted Berker W.1, polar white matt	1		on demand	50553512
Blind series push-button insert with rocker 2gang with imprinted symbol arrow surface-mounted/flush-mounted Berker W.1, grey matt	10		on demand	50553515



50423515

Blind series switch insert 1pole with rocker 2gang with imprinted symbol Arrows surface-mounted/flush-mounted

Description	P.U.	Price Group	Price	Art No.
Blind series switch insert 1pole with rocker 2gang with imprinted symbol Arrows surface-mounted/flush-mounted Berker W.1, grey matt	10		on demand	30653515
Blind series switch insert 1pole with rocker 2gang with imprinted symbol Arrows surface-mounted/flush-mounted Berker W.1, polar white matt	1		on demand	30653512
Blind series push-button insert with rocker 2gang with imprinted symbol arrow surface-mounted/flush-mounted Berker W.1, polar white matt	1		on demand	50553522
Blind series push-button insert with rocker 2gang with imprinted symbol arrow surface-mounted/flush-mounted Berker W.1	1		on demand	50553525
Blind series push-button with imprinted symbol arrow surface-mounted Berker W.1, polar white matt	1		on demand	50753532
Blind series push-button with imprinted symbol arrow surface-mounted Berker W.1	10		on demand	50753535



30653515



44713512

**SAFETY EMERGENCY push-button insert, NC contact + NO contact surface-mounted/flush-mounted**

Description	P.U.	Price Group	Price	Art No.
SAFETY EMERGENCY push-button insert, NC contact + NO contact surface-mounted/flush-mounted Berker W.1, grey matt	1		on demand	44713512



44713515

**SAFETY EMERGENCY push-button insert, NC contact + NO contact surface-mounted/flush-mounted - lock - differing closures**

Description	P.U.	Price Group	Price	Art No.
SAFETY EMERGENCY push-button insert, NC contact + NO contact surface-mounted/flush-mounted Lock - identical lockings, Berker W.1, grey matt	1		on demand	44713515



14093515

**FCC socket outlet insert 8pole shielded, cat.6 with hinged cover surface-mounted/flush-mounted**

Description	P.U.	Price Group	Price	Art No.
FCC socket outlet insert 8pole shielded with hinged cover surface-mounted/flush-mounted, cat.6 with labelling field, Berker W.1, light grey matt	1		on demand	14093515
FCC socket outlet insert 8pole shielded with hinged cover surface-mounted/flush-mounted, cat.6 with labelling field, Berker W.1, polar white matt	1		on demand	14093512



14103505

**FCC socket outlet insert 8/8pole shielded, cat.6 with hinged cover surface-mounted/flush-mounted**

Description	P.U.	Price Group	Price	Art No.
FCC socket outlet insert 8/8pole shielded with hinged cover surface-mounted/flush-mounted, cat.6 with labelling field, Berker W.1, light grey matt	1		on demand	14103505
FCC socket outlet insert 8/8pole shielded with hinged cover surface-mounted/flush-mounted, cat.6 with labelling field, Berker W.1, polar white matt	1		on demand	14103502

Loudspeaker connection boxes-insert with hinged cover surface-mounted/flush-mounted

Description	P.U.	Price Group	Price	Art No.
Loudspeaker connection boxes-insert with hinged cover surface-mounted/flush-mounted with labelling field, Berker W.1	1		on demand	11963525
Loudspeaker connection boxes-insert with hinged cover surface-mounted/flush-mounted with labelling field, Berker W.1, polar white matt	1		on demand	11963522



11963525



Stereo loudspeaker connection boxes-insert with hinged cover surface-mounted/flush-mounted

Description	P.U.	Price Group	Price	Art No.
Stereo loudspeaker connection boxes-insert with hinged cover surface-mounted/flush-mounted with labelling fields, Berker W.1	1		on demand	11963535
Stereo loudspeaker connection boxes-insert with hinged cover surface-mounted/flush-mounted with labelling fields, Berker W.1, polar white matt	1		on demand	11963532



11963535



Insert of LED signal light, red/green lighting surface-mounted/flush-mounted

Description	P.U.	Price Group	Price	Art No.
Insert of LED signal light, red/green lighting surface-mounted/flush-mounted Berker W.1, grey matt	1		on demand	51733515



51733515



Insert of LED signal light, white lighting surface-mounted/flush-mounted

Description	P.U.	Price Group	Price	Art No.
Insert of LED signal light, white lighting surface-mounted/flush-mounted Berker W.1, grey matt	1		on demand	51733525



51733525





51733535

**Insert of LED signal light, blue lighting surface-mounted/flush-mounted**

Description	P.U.	Price Group	Price	Art No.
Insert of LED signal light, blue lighting surface-mounted/flush-mounted Berker W.1, grey matt	1		on demand	51733535



19058001

Foil for LED signal light insert

Description	P.U.	Price Group	Price	Art No.
Foil with imprint symbol Man for LED signal light Accessories	1		on demand	19058001
Foil with imprint symbol Lady for LED signal light Accessories	1		on demand	19058002
Foil with imprint symbol Wheelchair for LED signal light Accessories	1		on demand	19058003
Foil with imprint symbol Stairs for LED signal light Accessories	1		on demand	19058004
Foil with imprint symbol for Lift for LED signal light Accessories	1		on demand	19058005



19058011

Foil bi-colour for LED signal light insert

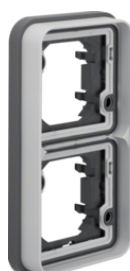
Description	P.U.	Price Group	Price	Art No.
Foil bi-colour with imprint symbol for Do not disturb / Make up room for LED signal light Accessories	1		on demand	19058011
Foil bi-colour with imprint symbol for Wait/ Enter for LED signal light Accessories	1		on demand	19058012



13283505

Frame 1gang for flush-mounted installation

Description	P.U.	Price Group	Price	Art No.
Frame 1gang for flush-mounted installation with sealing, Berker W.1, light grey matt	10		on demand	13283505
Frame 1gang for flush-mounted installation with sealing, Berker W.1, polar white matt	10		on demand	13283502



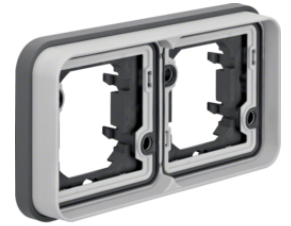
13293515

Frame 2gang vertical for flush-mounted installation

Description	P.U.	Price Group	Price	Art No.
Frame 2gang vertical for flush-mounted installation with sealing, Berker W.1, light grey matt	5		on demand	13293515
Frame 2gang vertical for flush-mounted installation with sealing, Berker W.1, polar white matt	5		on demand	13293512

Frame 2gang horizontal for flush-mounted installation

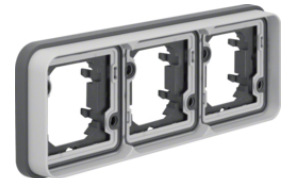
Description	P.U.	Price Group	Price	Art No.
Frame 2gang horizontal for flush-mounted installation with sealing, Berker W.1, light grey matt	5		on demand	13293505
Frame 2gang horizontal for flush-mounted installation with sealing, Berker W.1, polar white matt	5		on demand	13293502



13293505

Frame 3gang horizontal for flush-mounted installation

Description	P.U.	Price Group	Price	Art No.
Frame 3gang horizontal for flush-mounted installation with sealing, Berker W.1, light grey matt	1		on demand	13303505
Frame 3gang horizontal for flush-mounted installation with sealing, Berker W.1, polar white matt	1		on demand	13303502



13303505

Housing with frame surface-mounted

Description	P.U.	Price Group	Price	Art No.
Housing with frame surface-mounted Berker W.1, grey/light grey matt	10		on demand	6118913505
Housing with frame surface-mounted Berker W.1, polar white matt	10		on demand	6118913502



6118913505

Surface-mounted housing 2gang vertical, with frame surface-mounted

Description	P.U.	Price Group	Price	Art No.
Surface-mounted housing 2gang vertical, with frame surface-mounted Berker W.1, grey/light grey matt	5		on demand	6719333505
Surface-mounted housing 2gang vertical, with frame surface-mounted Berker W.1, polar white matt	5		on demand	6719333502



6719333505

Surface-mounted housing 2gang horizontal, with frame surface-mounted

Description	P.U.	Price Group	Price	Art No.
Surface-mounted housing 2gang horizontal, with frame surface-mounted Berker W.1, grey/light grey matt	5		on demand	6719323505
Surface-mounted housing 2gang horizontal, with frame surface-mounted Berker W.1, polar white matt	5		on demand	6719323502
Surface-mounted housing 2gang horizontal, with frame surface-mounted Berker W.1, grey/light grey matt	5		on demand	6719323515
Surface-mounted housing 2gang horizontal, with frame surface-mounted Berker W.1, polar white matt	5		on demand	6719323512



6719323505



Surface-mounted housing 3gang horizontal, with frame surface-mounted

Description	P.U.	Price Group	Price	Art No.
Surface-mounted housing 3gang horizontal, with frame surface-mounted Berker W.1, grey/light grey matt	1		on demand	6019303505
Surface-mounted housing 3gang horizontal, with frame surface-mounted Berker W.1, polar white matt	1		on demand	6019303502

6019303505



12033542

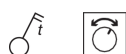


Aerial sockets insert 2hole with hinged cover surface-mounted, single socket

Description	P.U.	Price Group	Price	Art No.
Aerial sockets insert 2hole with hinged cover surface-mounted, single socket Berker W.1, polar white matt	1		on demand	12033542
Aerial sockets insert 2hole with hinged cover surface-mounted, single socket Berker W.1, grey matt	1		on demand	12033545
Aerial sockets insert 2hole with hinged cover surface-mounted, throughpass socket Berker W.1, polar white matt	1		on demand	12033552
Aerial sockets insert 2hole with hinged cover surface-mounted, throughpass socket Berker W.1, grey matt	1		on demand	12033555
Aerial sockets insert 3hole with hinged cover surface-mounted, single socket Berker W.1, polar white matt	1		on demand	12033562
Aerial sockets insert 3hole with hinged cover surface-mounted, single socket Berker W.1, grey matt	1		on demand	12033565



42273522



Mechanical timer setting knob

Description	P.U.	Price Group	Price	Art No.
Insert for mechanical timer 15 min with setting knob, Berker W.1, polar white matt	1		on demand	42273522
Insert for mechanical timer 15 min with setting knob, Berker W.1, grey matt	1		on demand	42273525

LED unit 230 V, for switches/push-buttons

Description	P.U.	Price Group	Price	Art No.
LED unit 230 V, for switches/push-buttons Accessories, red	10		on demand	16773500
LED unit 230 V, for switches/push-buttons Berker W.1, blue	10		on demand	16883500
LED unit 230 V, for for wiring with switches/push-buttons Berker W.1, red	10		on demand	16863501
LED unit 230 V, for for wiring with switches/push-buttons Berker W.1, blue	10		on demand	16863502
LED unit 12...24 V, for for wiring with switches/push-buttons Berker W.1, red	10		on demand	16873501
LED unit 12...24 V, for for wiring with switches/push-buttons Berker W.1, blue	10		on demand	16873502



16773500

Lens with imprint

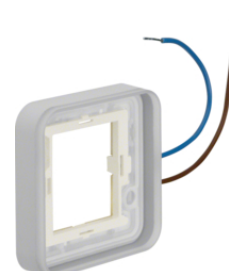
Description	P.U.	Price Group	Price	Art No.
Lens with imprinted symbol for light Berker W.1, transparent	1		on demand	18223501
Lens with imprinted symbol for bell Berker W.1, transparent	1		on demand	18223502
Lens with imprinted symbol for door opener Berker W.1, transparent	1		on demand	18223503



18223501

Frame 1gang, can be illuminated 230 V, for housing surface-mounted

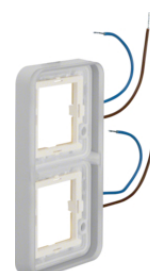
Description	P.U.	Price Group	Price	Art No.
Frame 1gang, can be illuminated 230 V, for housing surface-mounted Berker W.1, white	1		on demand	13383512
Frame 1gang, can be illuminated 230 V, for housing surface-mounted Berker W.1, blue	1		on demand	13383513



13383512

Frame 2gang, vertical, can be illuminated 230 V, for housing surface-mounted

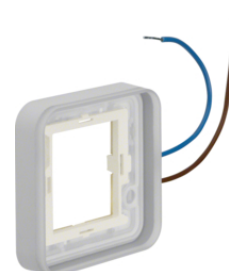
Description	P.U.	Price Group	Price	Art No.
Frame 2gang, vertical, illuminated 230 V, for housing surface-mounted Berker W.1	1		on demand	13393512
Frame 2gang, vertical, illuminated 230 V, for housing surface-mounted Berker W.1	1		on demand	13393513



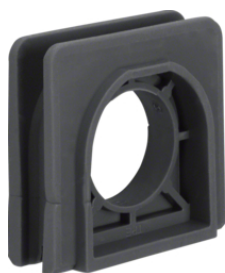
13393512

Frame 1gang, can be illuminated 12 ... 24 V, for housings surface-mounted

Description	P.U.	Price Group	Price	Art No.
Frame 1gang, can be illuminated 12 ... 24 V, for housings surface-mounted Berker W.1, white	1		on demand	13383502
Frame 1gang, can be illuminated 12 ... 24 V, for housings surface-mounted Berker W.1, blue	1		on demand	13383503



13383502



18153515

Connector for multiple combinations surface-mounted

Description	P.U.	Price Group	Price	Art No.
Connector for multiple combinations surface-mounted Berker W.1, grey matt	10		on demand	18153515



18033515

Cable entry for 2 cables

Description	P.U.	Price Group	Price	Art No.
Cable entry for 2 cables Berker W.1, grey matt	10		on demand	18033515
Cable entry for 2 cables Berker W.1, polar white matt	10		on demand	18033512



18163515

Tube entry M20 x 1.5, boltable

Description	P.U.	Price Group	Price	Art No.
Cable entry M20 x 1.5, boltable Berker W.1, grey matt	10		on demand	18163515



18143515

Cable and tube entry

Description	P.U.	Price Group	Price	Art No.
Cable and tube entry Berker W.1, grey matt	10		on demand	18143515
Cable and tube entry Berker W.1, polar white matt	10		on demand	18143512
Cable entries M20 x 1.5, can be screwed with union nut Berker W.1, grey matt	10		on demand	18163525
Coduit entry 2gang, M20 x 1.5, boltable Berker W.1, grey matt	10		on demand	18893505



18033500

Cover plug for screw holes

Description	P.U.	Price Group	Price	Art No.
Cover plug for screw holes Berker W.1, grey matt	10		on demand	18033500

Accessories

Description	P.U.	Price Group	Price	Art No.
Insert with plug-in opening Ø 22 mm Berker W.1	1		on demand	42913505



42913505