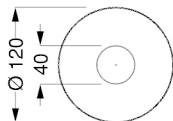
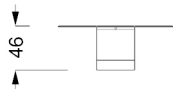
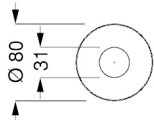
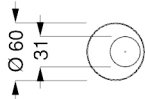
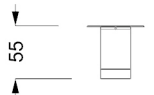


TAU 40 STEEL VETRO

DISEGNO RICCARDO LUCATELLO

mc kg



Tavolini a cilindro in finitura ottone dark (105M) lucido con inserto alla base in ottone (104M) opaco. Giunzione in acciaio lucido. Piano in vetro bronzo sp.10mm con piastra in metallo finitura ottone (104M)

Low and side tables with cylinder base in shiny dark brass (105M) finish with a bottom section in matt brass (104M). Junction plate in shiny steel. Top in bronze glass 10mm thick with metal plate in brass (104M) finish.

Couch- und Beistelltische mit Zylinderbasis Ausführung: oben dark Messing (105M) glänzend und unten Messing (104M) satiniert matt. Platte aus Bronze Glas 10mm st. mit Metallscheibe Messing (104M) Finish.

Tables basse et guéridons avec base à cylindre en finition laiton dark (105M) brillant avec partie finale en laiton (104M) satiné matt. Plateau en verre bronze ép.10mm avec plaque en metal finition laiton (104M).

MISURE STANDARD/STANDARD SIZE/STANDARDGRÖSSEN/MESURES STANDARDS

Ø 60 x 55 h

Ø 80 x 46 h

Ø 120 x 46 h