

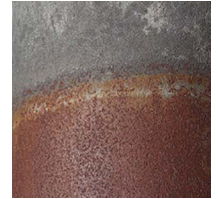


## 15v Pendant Natural GP2000-N-2



### Available colors



Natural



Zinc

	North America	Europe
<b>Bulb</b>	Max 15W LED, GU10, 120V	Max 15W LED, GU10, 220-240V
<b>Color temperature</b>	2700K (recommended)	2700K (recommended)
<b>Lumen output</b>	Dependent on bulb	Dependent on bulb
<b>Cord</b>	Black, 6.5ft (16ft available)	Black fabric, 2m (5m available)
<b>Canopy</b>	Black powder coated, Ø 5, H 1 (in)	Rusted steel, Ø 10, H 2.5 (cm)
<b>Material</b>	Naturally rusted steel	Naturally rusted steel
<b>Size</b>	Ø 2.5, H 6 (in)	Ø 6, H 15 (cm)
<b>Weight</b>	2.2lbs	1.0kg
<b>Fire retardant</b>		
<b>Country of origin</b>	The Netherlands	The Netherlands
<b>Certification</b>		

For use in dry location. After the natural oxidation process, all items are treated to stop further rusting. The material will not come off of stain.

### Designed in Seattle, Washington, USA.

Custom cords and canopies are available. Contact our offices for more information.

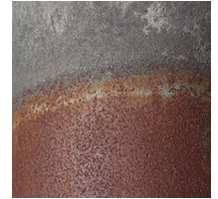


## 15v Pendant Zinc GP2000-Z-2



### Available colors



Natural



Zinc

	North America	Europe
<b>Bulb</b>	Max 15W LED, GU10, 120V	Max 15W LED, GU10, 220-240V
<b>Color temperature</b>	2700K (recommended)	2700K (recommended)
<b>Lumen output</b>	Dependent on bulb	Dependent on bulb
<b>Cord</b>	Black, 6.5ft (16ft available)	Black fabric, 2m (5m available)
<b>Canopy</b>	Black powder coated, Ø 5, H 1 (in)	Rusted steel, Ø 10, H 2.5 (cm)
<b>Material</b>	Naturally rusted steel	Naturally rusted steel
<b>Size</b>	Ø 2.5, H 6 (in)	Ø 6, H 15 (cm)
<b>Weight</b>	2.2lbs	1.0kg
<b>Fire retardant</b>		
<b>Country of origin</b>	The Netherlands	The Netherlands
<b>Certification</b>		

For use in dry location. After the natural oxidation process, all items are treated to stop further rusting. The material will not come off of stain.

### Designed in Seattle, Washington, USA.

Custom cords and canopies are available. Contact our offices for more information.