

**MIDJ**  
INITALY

# Apelle DS CU Chair

design Beatriz Sempere, 2013

Chair with four ways base in lacquered steel. It comes with white wheels combined with a white base or with chrome wheels with black edge combined with the black base. Seat and backrest in hide.



## Colors and Materials

### Structure



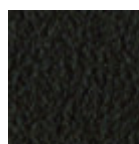
White Steel



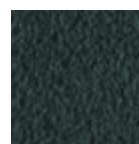
Black Steel



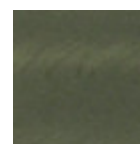
Sand Steel



Brown Steel



Grafite Steel



Industrial Steel

1 color



Fango Steel



Bronze Steel



Pastel Yellow Steel



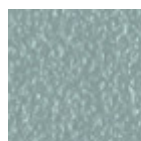
Ocher Steel



Red steel



Sage Green Steel



Light blue steel



Ocean Blue Steel



Light Grey Steel



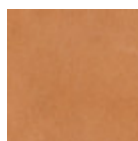
Facepowder Pink Steel

### Coating



Hide

20 Colors



Tuscan Hide

3 Colors

## Dimensions

## Volumetric Details

**Weight** 10.5 Kg  
**Volume** 0.31 mc  
**Package** 1

Image not found or type unknown

	cm	inch
A	84	33.1
B	53	20.9
C	56	22.1
D	47	18.5

## Downloads

- Apelle catalog (pdf) - <https://www.midj.com/images/uploads/resources/apelle-catalogo-2017.pdf>  
3D Autocad Apelle DS CU (zip) - <https://www.midj.com/images/uploads/resources/3d-midj-apelle-ds-cu-autocad.zip>  
3ds Apelle DS CU (zip) - <https://www.midj.com/images/uploads/resources/3ds-midj-apelle-ds-cu.zip>  
3D pCon Planner Apelle DS CU (zip) - <https://www.midj.com/images/uploads/resources/3d-midj-apelle-ds-cu-pcon.zip>  
3D SketchUp Apelle DS CU (zip) - <https://www.midj.com/images/uploads/resources/3d-midj-apelle-ds-cu-sketchup.zip>  
3D obj Apelle DS CU (zip) - <https://www.midj.com/images/uploads/resources/3d-midj-apelle-ds-cu-obj.zip>

## Materials Certifications

Hide

FIRE RESISTANCE:  
Technical Bulletin 117/00 sez E part. 1  
EN 1021 parte 1/94, parte 2/94  
BS 5852/90

PROPRIETIES AND ADVANTAGES  
The hide is a hygienic and very practical product: it resists to wear, it's impermeable to water but, at the same time, the hide wicks air and sweat. The hide is obtained from the skin of bovines breeds and slaughtered for food purposes and subsequently treated with chromium salts.

CLEANING INSTRUCTIONS  
Use only a damp, non abrasive cloth; do not use products containing solvents or alcohol that may damage the surface. It is advisable to test an invisible area of the product before cleaning it all. For good preservation of the product purchased, it is unadvisable to expose it to direct sunlight that may alter its features and colours. Any surface imperfections are natural features of hide and guarantee that it is an original product.

## Materials Certifications

Tuscan Hide

Tuscan Hide does not fear to get aged since the oldest it gets the more unique it becomes.  
It is a material deriving from animal's leather which suffer a process called "vegetable tanning" with natural tannins and with the help of some products biologically compatible whether for the dyeing or for the finishing.  
Any possible imperfection, sign, scar, stain of the Tuscan hide surface are a natural characteristics which guarantees its originality.