



Master Extendable Table

design Paolo Vernier, 2017

Extendible table with steel frame. Top available in different sizes and finishes.

Also available fixed version in size 190x100 cm.

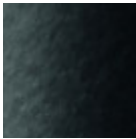


Colors and Materials

Structure

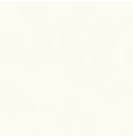


White Steel



Black Steel

Coating

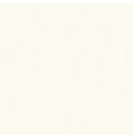


White Fenix



Black Fenix

Extensions



White Fenix



Black Fenix

Dimensions

Dimensions not found or type unknown

	A	B	C	D
	(cm)	(cm)	(cm)	(cm)
	(inch)	(inch)	(inch)	(inch)
190x100	76	190	100	
(cm)	29.9	74.8	39.4	
(inch)				

	A	B	C	D
	(cm)	(cm)	(cm)	(cm)
	(inch)	(inch)	(inch)	(inch)
140/190x90				
(cm)	76	140	90	190
(inch)	29.9	55.1	35.4	74.8
160/210x90				
(cm)	76	160	90	210
(inch)	29.9	63	35.4	82.7

Volumetric Details

Weight 64.5 Kg

Volume 0.51 mc

Package 4

Downloads

3D Master 190x90 (zip) - <https://www.midj.com/images/uploads/resources/master-190-3d.zip>

3D Master 140/190x90 (zip) - <https://www.midj.com/images/uploads/resources/master-140-90x90-3d.zip>

3D Master 160/210x90 (zip) - <https://www.midj.com/images/uploads/resources/master-160-210x90-3d.zip>