

Nenè quadro Table

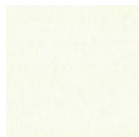
design Paolo Vernier, 2013

Nenè stackable table with four legs base in lacquered steel. Melamine or hpl top.

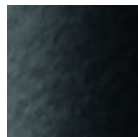


Colors and Materials

Structure



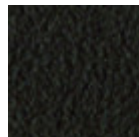
White Steel



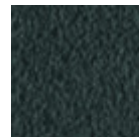
Black Steel



Sand Steel

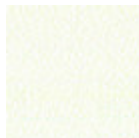


Brown Steel

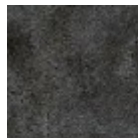


Grafite Steel

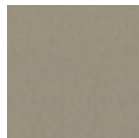
Coating



White Melamine



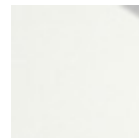
Black Melamine



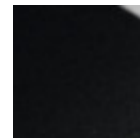
Sand melamine



Graphite Melamine



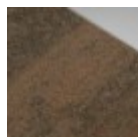
White hpl black core



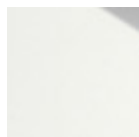
Black hpl



Hpl Cemento



Hpl Corten



White hpl white core

Dimensions

Dimensions
Image not found or type unknown

	A (cm)	B (cm)	C (cm)
	(inch)	(inch)	(inch)
75x75			
(cm)	75	75	75
(inch)	29.5	29.5	29.5
85x85			
(cm)	75	85	85
(inch)	29.5	33.5	33.5

Volumetric Details

Weight 22.5 Kg
Volume 0.29 mc
Package 3

Downloads

3D Nenè 75x75 (zip) - <https://www.midj.com/images/uploads/resources/nene-75x75-3d.zip>

