

Nenè rettangolare Table

design Paolo Vernier, 2013

Nenè table with four legs base in lacquered steel. Melamine or veneered wood top.

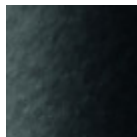


Colors and Materials

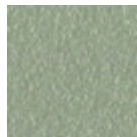
Structure



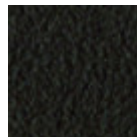
White Steel



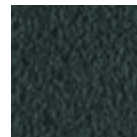
Black Steel



Sand Steel



Brown Steel



Grafite Steel

Coating



Melamine

8 Colors

Dimensions

Dimensions not found or type unknown

	cm	inch
A	75	29.5
B	140	55.1
C	90	35.4

Volumetric Details

Weight 32 Kg

Volume 0.29 mc

Package 3

Downloads

3D Nenè 140x90 (zip) - <https://www.midj.com/images/uploads/resources/nene-140x90-3d.zip>