

# Ola H75 M Stool

design Paolo Vernier, 2016

Stool with painted steel structure and base, suitable for outdoor use.



## Colors and Materials

### Structure



White Steel



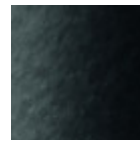
Sand Steel



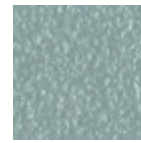
Pastel Yellow Steel



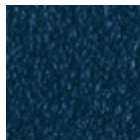
Grafite Steel



Black Steel



Light blue steel



Ocean Blue Steel



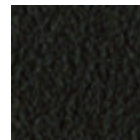
Bronze Steel



Fango Steel



Light Grey Steel



Brown Steel



Ocher Steel



Facepowder Pink  
Steel

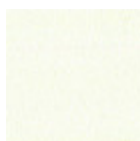


Red steel

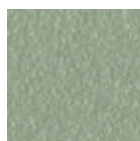


Sage Green Steel

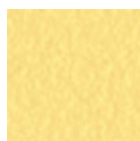
### Coating



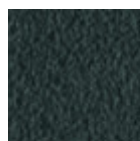
White Steel



Sand Steel



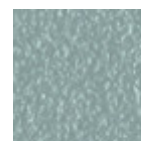
Pastel Yellow Steel



Grafite Steel



Black Steel



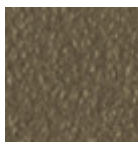
Light blue steel



Ocean Blue Steel



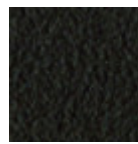
Bronze Steel



Fango Steel



Light Grey Steel



Brown Steel



Ocher Steel



Facepowder Pink Steel



Red steel



Sage Green Steel

## Dimensions

Dimensions

## Volumetric Details

Weight 9 Kg

Volume 0.28 mc

Package 1

Image not found or type unknown

	cm	inch
A	100	39.4
B	50	19.7
C	52	20.1
D	75	29.5