

# Ola S M LG Chair

design Paolo Vernier, 2016

Ola chair with structure in lacquered steel and wooden shell.

The Ola chair is stackable up to eight units.



## Colors and Materials

### Structure



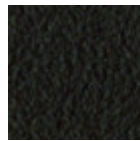
White Steel



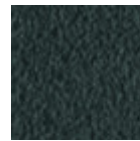
Black Steel



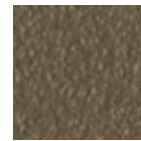
Sand Steel



Brown Steel



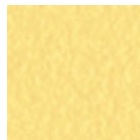
Grafite Steel



Fango Steel



Bronze Steel



Pastel Yellow Steel



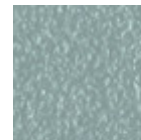
Ocher Steel



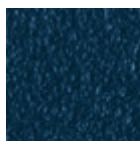
Red steel



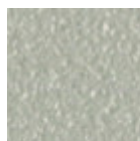
Sage Green Steel



Light blue steel



Ocean Blue Steel

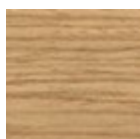


Light Grey Steel

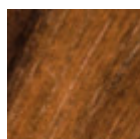


Facepowder Pink  
Steel

### Coating



Lacquered veneered  
wood



Veneered flamed  
walnut

9 Colors

## Dimensions

---

## Volumetric Details

**Weight** 14 Kg

**Volume** 0.31 mc

**Package** 1

Image not found or type unknown

|          | cm | inch |
|----------|----|------|
| <b>A</b> | 82 | 32.3 |
| <b>B</b> | 49 | 19.3 |
| <b>C</b> | 54 | 21.3 |
| <b>D</b> | 45 | 17.7 |

---

## Downloads

[Ola Catalog \(pdf\)](https://www.midj.com/images/uploads/resources/Midj_2016_catalogo_Ola.pdf) - [https://www.midj.com/images/uploads/resources/Midj\\_2016\\_catalogo\\_Ola.pdf](https://www.midj.com/images/uploads/resources/Midj_2016_catalogo_Ola.pdf)

[3D Ola S \(zip\)](https://www.midj.com/images/uploads/resources/ola-s-ts-3d.zip) - <https://www.midj.com/images/uploads/resources/ola-s-ts-3d.zip>

## Materials Certifications

### Lacquered veneered wood

#### FEATURES AND PLUS

The veneered tops are the result of a process of bonding of thin wooden sheets, obtained by the horizontal rotary cut of the trunks applied to various types of supports to produce furniture elements, which look similar to solid wood but with better performance in terms of resistance to woodworms, lightness and more stability over time.

#### MAINTENANCE

For the regular cleaning schedule of stained veneered tops, use a damp cloth with mild soap diluted in water or specific products. Dry with a cloth or absorbent paper. Do not use abrasive products. . In case of accidental release of liquid substances, dab immediately the surface with absorbent paper or a dry, clean cloth. Avoid proximity to heat sources. Expose the veneered wood surfaces to light, for example by opening periodically the extensions of the tables that are placed inside the structures, or by moving any objects such as vases and accessories generally resting on the top.