



# Passepartout S M CU\_M Chair

design Midj R&D, 2013

Stakable chair with four square leg frame in chrome or lacquered steel.  
Shell upholstered in hide or regenerated hide.

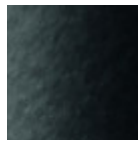


## Colors and Materials

### Structure



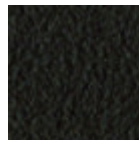
White Steel



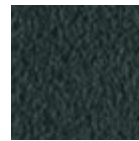
Black Steel



Sand Steel



Brown Steel



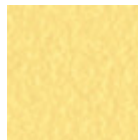
Grafite Steel



Fango Steel



Bronze Steel



Pastel Yellow Steel



Ocher Steel



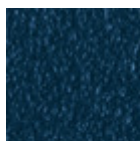
Red steel



Sage Green Steel



Light blue steel



Ocean Blue Steel



Light Grey Steel



Facepowder Pink  
Steel



Chrome

### Coating



Hide

20 Colors



Rigenerated Hide

10 Colors

## Dimensions

---

## Volumetric Details

**Weight** 6.5 Kg

**Volume** 0.25 mc

**Package** 1

Image not found or type unknown

	cm	inch
<b>A</b>	81	31.9
<b>B</b>	45	17.7
<b>C</b>	54	21.3
<b>D</b>	46	18.1

---

## Downloads

[3D Passepartout Q \(zip\)](https://www.midj.com/images/uploads/resources/passepartout-q-3d.zip) - <https://www.midj.com/images/uploads/resources/passepartout-q-3d.zip>

## Materials Certifications

### Hide

#### FIRE RESISTANCE:

Technical Bulletin 117/00 sez E part. 1

EN 1021 parte 1/94, parte 2/94

BS 5852/90

#### PROPRIETIES AND ADVANTAGES

The hide is a hygienic and very practical product: it resists to wear, it's impermeable to water but, at the same time, the hide wicks air and sweat. The hide is obtained from the skin of bovines breeds and slaughtered for food purposes and subsequently treated with chromium salts.

#### CLEANING INSTRUCTIONS

Use only a damp, non abrasive cloth; do not use products containing solvents or alcohol that may damage the surface. It is advisable to test an invisible area of the product before cleaning it all. For good preservation of the product purchased, it is inadvisable to expose it to direct sunlight that may alter its features and colours. Any surface imperfections are natural features of hide and guarantee that it is an original product.