



# Passepartout S M CU\_T Chair

design Midj R&D, 2013

Stakable chair with four square leg frame in chrome or lacquered steel.  
Shell upholstered in hide or regenerated hide.

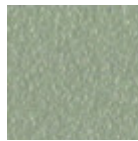


## Colors and Materials

### Structure



White Steel



Sand Steel



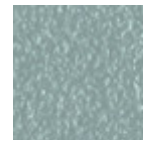
Pastel Yellow Steel



Grafite Steel



Black Steel



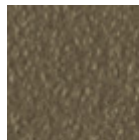
Light blue steel



Ocean Blue Steel



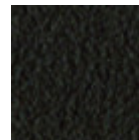
Bronze Steel



Fango Steel



Light Grey Steel



Brown Steel



Ocher Steel



Facepowder Pink  
Steel



Red steel



Sage Green Steel



Chrome

### Coating



Hide  
20 Colors



Rigenerated Hide  
10 Colors

## Dimensions

## Volumetric Details

**Weight** 6.5 Kg

**Volume** 0.25 mc

**Package** 1

Image not found or type unknown

	cm	inch
<b>A</b>	81	31.9
<b>B</b>	45	17.7
<b>C</b>	54	21.3
<b>D</b>	46	18.1

## Materials Certifications

### Hide

#### FIRE RESISTANCE:

Technical Bulletin 117/00 sez E part. 1

EN 1021 parte 1/94, parte 2/94

BS 5852/90

#### PROPRIETIES AND ADVANTAGES

The hide is a hygienic and very practical product: it resists to wear, it's impermeable to water but, at the same time, the hide wicks air and sweat. The hide is obtained from the skin of bovines breeds and slaughtered for food purposes and subsequently treated with chromium salts.

#### CLEANING INSTRUCTIONS

Use only a damp, non abrasive cloth; do not use products containing solvents or alcohol that may damage the surface. It is advisable to test an invisible area of the product before cleaning it all. For good preservation of the product purchased, it is inadvisable to expose it to direct sunlight that may alter its features and colours. Any surface imperfections are natural features of hide and guarantee that it is an original product.