



Passepartout S M LG_M Chair

design Midj R&D, 2013

Stakable chair with four leg frame in chrome or lacquered steel. Shell in wood finish dark oak or light oak.



Colors and Materials

Structure



White Steel



Black Steel



Sand Steel



Brown Steel



Grafite Steel



Fango Steel



Bronze Steel



Pastel Yellow Steel



Ocher Steel



Red steel



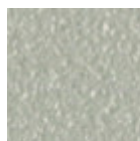
Sage Green Steel



Light blue steel



Ocean Blue Steel



Light Grey Steel

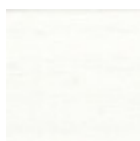


Facepowder Pink
Steel

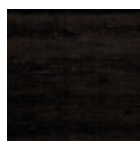


Chrome

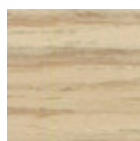
Coating



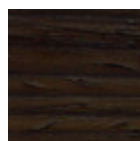
White lacquered
veneered wood



Black lacquered
veneered wood



Veneered wood
natural finish



Veneered wood dark
oak

Dimensions

Volumetric Details

Weight 6.5 Kg

Volume 0.25 mc

Package 1

Image not found or type unknown

	cm	inch
A	81	31.9
B	45	17.7
C	54	21.3
D	46	18.1

Downloads

3D Passepartout S (zip) - <https://www.midj.com/images/uploads/resources/passepartout-s-3d.zip>