



Raff S M BD_M Chair

design Area 44, 2012

Stackable chair with four leg frame in chrome. Shell available in Baydur®.

This versione is suitable for outdoor use.



Colors and Materials

Structure



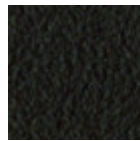
White Steel



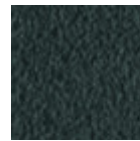
Black Steel



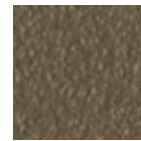
Sand Steel



Brown Steel



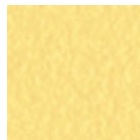
Grafite Steel



Fango Steel



Bronze Steel



Pastel Yellow Steel



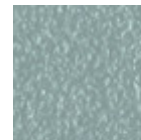
Ocher Steel



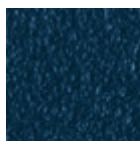
Red steel



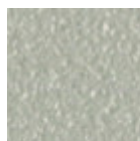
Sage Green Steel



Light blue steel



Ocean Blue Steel



Light Grey Steel



Facepowder Pink Steel



Chrome

Coating



Baydur

3 Colors

Dimensions

Volumetric Details

Weight 7 Kg

Volume 0.34 mc

Package 1

Image not found or type unknown

	cm	inch
A	86	33.9
B	60	23.6
C	56	22.1
D	47	18.5

Downloads

3D Raff S (zip) - <https://www.midj.com/images/uploads/resources/raff-s-3d.zip>