



Silvy SB M CU Chair

design Midj R&D, 2015

Chair with four legs base in lacquered or chrome steel. Seat upholstered in hide.

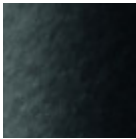


Colors and Materials

Structure



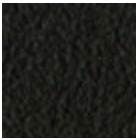
White Steel



Black Steel



Sand Steel



Brown Steel



Grafite Steel



Chrome

Coating



Hide
20 Colors



Rigenerated Hide
10 Colors

Dimensions

Dimensions

	cm	inch
A	88	34.7
B	43	16.9
C	52	20.5
D	46	18.1

Volumetric Details

Weight 4.5 Kg
Volume 0.31 mc
Package 1

Materials Certifications

Hide

FIRE RESISTANCE:
Technical Bulletin 117/00 sez E part. 1
EN 1021 parte 1/94, parte 2/94
BS 5852/90

PROPRIETIES AND ADVANTAGES

The hide is a hygienic and very practical product: it resists to wear, it's impermeable to water but, at the same time, the hide wicks air and sweat. The hide is obtained from the skin of bovines breeds and slaughtered for food purposes and subsequently treated with chromium salts.

CLEANING INSTRUCTIONS

Use only a damp, non abrasive cloth; do not use products containing solvents or alcohol that may damage the surface. It is advisable to test an invisible area of the product before cleaning it all. For good preservation of the product purchased, it is unadvisable to expose it to direct sunlight that may alter its features and colours. Any surface imperfections are natural features of hide and guarantee that it is an original product.