

Slim H75 M Stool

design Paolo Vernier, 2017

Bar stool with sled base in lacquered steel or industrial effect. The versions in lacquered steel steel is suitable for the outdoors use.



Colors and Materials

Structure



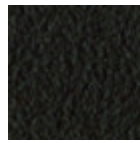
White Steel



Black Steel



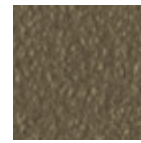
Sand Steel



Brown Steel



Grafite Steel



Fango Steel



Bronze Steel



Pastel Yellow Steel



Ocher Steel



Red steel



Sage Green Steel



Light blue steel



Ocean Blue Steel

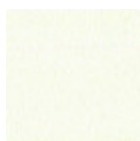


Facepowder Pink Steel

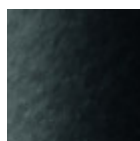


Light Grey Steel

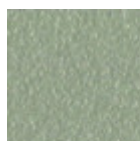
Coating



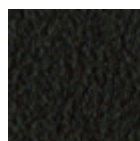
White Steel



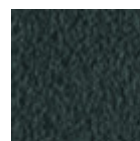
Black Steel



Sand Steel



Brown Steel



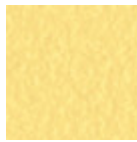
Grafite Steel



Fango Steel



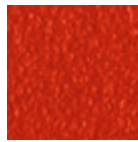
Bronze Steel



Pastel Yellow Steel



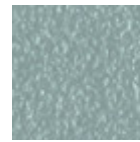
Ocher Steel



Red steel



Sage Green Steel



Light blue steel



Ocean Blue Steel



Facepowder Pink Steel



Light Grey Steel

Dimensions

Dimensions

Volumetric Details

Weight 10 Kg

Volume 0.28 mc

Package 1

Image not found or type unknown

	cm	inch
A	106	41.7
B	54	21.3
C	52	20.5
D	76	29.9