

Strike H65 L-S Stool

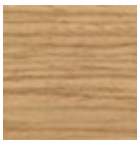
design AtelierNanni, 2017

Fixed stool with wooden frame. Backrest in lacquered steel.



Colors and Materials

Structure



Lacquered ash

9 Colors

Coating



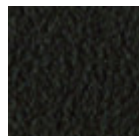
White Steel



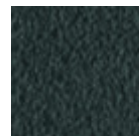
Black Steel



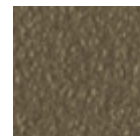
Sand Steel



Brown Steel



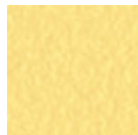
Grafite Steel



Fango Steel



Bronze Steel



Pastel Yellow Steel



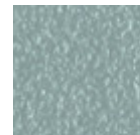
Ocher Steel



Red steel



Sage Green Steel



Light blue steel



Ocean Blue Steel



Light Grey Steel



Facepowder Pink Steel

Dimensions

Volumetric Details

Weight 8 Kg

Volume 0.30 mc

Package 1

Image not found or type unknown

	cm	inch
A	98	38.6
B	48	18.9
C	51	20.1
D	66	26