

Trampoliere OUT P M Armchair

design Roberto Paoli, 2013

Trampoliere stackable armchair with four leg base in lacquered steel.
Suitable for outdoor use.

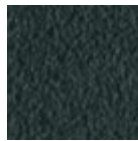


Colors and Materials

Structure



White Steel



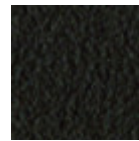
Grafite Steel



Black Steel



Sand Steel



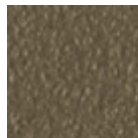
Brown Steel



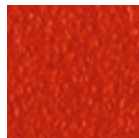
Pastel Yellow Steel



Light blue steel



Fango Steel



Red steel



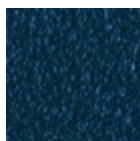
Bronze Steel



Ocher Steel



Sage Green Steel



Ocean Blue Steel

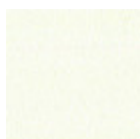


Light Grey Steel

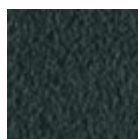


Facepowder Pink
Steel

Coating



White Steel



Grafite Steel



Black Steel



Pastel Yellow Steel



Light blue steel



Red steel

Dimensions

Volumetric Details

Weight 8 Kg

Volume 0.28 mc

Package 1

Image not found or type unknown

	cm	inch
A	77	30.3
B	57	22.4
C	52	20.5
D	46	18.1
E	65	25.6

Downloads

[3D Trampoliere P OUT \(zip\)](https://www.midj.com/images/uploads/resources/trampoliere-p-out.zip) - <https://www.midj.com/images/uploads/resources/trampoliere-p-out.zip>