

# Zeus MT Table

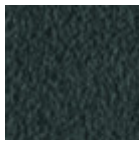
Fixed table with structure in laquered steel.

Top available in cristalceramic with size 200x100 cm (78,7x39,4 in) and 250x100 cm (98,4x39,4 in), in wood with size 200x106 cm (78,7x41,7 in) and 250x106 cm (98,4x41,7 in), in glass with size 200x106 cm (78,7x41,7 in), 250x106 cm (98,4x41,7 in) and 300x106 cm (118,1x41,7 in).



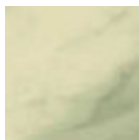
## Colors and Materials

### Structure

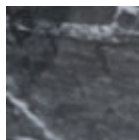


Grafite Steel

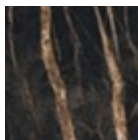
### Coating



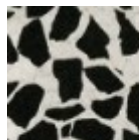
Crystalceramic with effect calacatta marble



Crystalceramic Glossy Black Greek Marble



Crystalceramic with effect noir desir marble



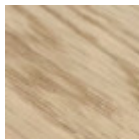
Venetian crystalceramic



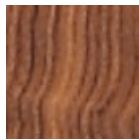
Extraclear Transparent Glass



Veneered flamed walnut



Solid Oak straight edge



Solid Walnut bark edge

## Dimensions

Dimensions not found or type unknown

Dimensions

	A (cm)	B (cm)	C (cm)
	(inch)	(inch)	(inch)
<b>200x100</b>	76	200	100
<b>(cm)</b>	29.9	78.7	39.4
<b>(inch)</b>			

	A (cm)	B (cm)	C (cm)
	(inch)	(inch)	(inch)
<b>200x106</b>			
<b>(cm)</b>	76	200	106
(inch)	29.9	78.7	41.7
<b>250x100</b>			
<b>(cm)</b>	76	250	100
(inch)	29.9	98.4	39.4
<b>250x106</b>			
<b>(cm)</b>	76	250	106
(inch)	29.9	98.4	41.7

---

## Volumetric Details

**Weight** 153 Kg

**Volume** 0.44 mc

**Package** 5

---

## Downloads

**Zeus 3D (zip)** - <https://www.midj.com/images/uploads/resources/ZEUS.zip>

## Materials Certifications

### Solid Oak straight edge

#### FEATURES AND PLUS

Solid wood tops are obtained from the trunk of the tree, in particular from the heartwood, or the inner part (the less young one). Each top has unique characteristics in terms of veins and knots due to the natural origin of the material. To reach the widths necessary for the realization of a top for domestic use, several floorboards/strips are joined together in an effort to maintain the greater possible uniformity.

#### MAINTENANCE

For the regular cleaning schedule of Solid woos tops, use a wet sponge with mild soap diluted in water or specific products. Dry after each application with a cloth or absorbent paper. Do not use abrasive products. In case of accidental release of liquid substances, dab immediately the surface with absorbent paper or a dry, clean cloth. Avoid proximity to heat sources. Expose the solid wood surfaces to light, for example by opening periodically the extensions of the tables that are placed inside the structures, or by moving any objects such as vases and accessories generally resting on the top.