

# MIDJ INITALY

## Apelle Chic Coffee Table

design Beatriz Sempere, 2013

Apelle Chic coffee table with structure in lacquered steel, pink gold or black nickel. Top in ceramic or upholstered in hide.

Coffee table available in three different heights: h73 cm (28.7 in), h62 cm (24.4 in), h43 cm (16.9 in).

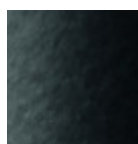


### Colors and Materials

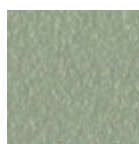
#### Structure



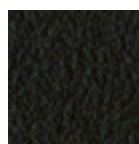
White Steel



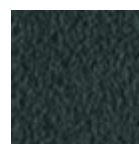
Black Steel



Sand Steel



Brown Steel



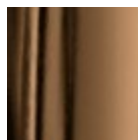
Grafite Steel



Pink Gold



Black Nickel



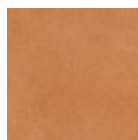
Golden Bronze

#### Coating



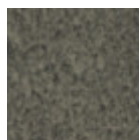
Hide

20 Colors

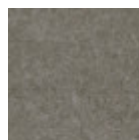


Tuscan Hide

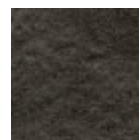
3 Colors



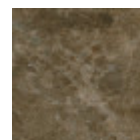
Lead Ceramic



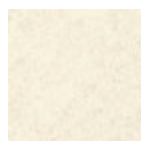
Cement Savoia  
Ceramic



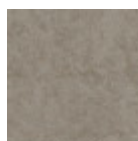
Charcoal Savoia  
Ceramic



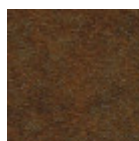
Emperador Marble  
Ceramic



Oxide White Ceramic



Oxide Sand Ceramic

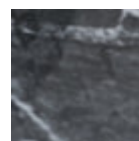


Corten Ceramic

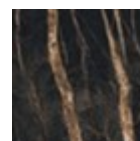


Ceramic with effect  
calacatta marble

1 color



Black greek glossy  
marble ceramic



Noir desir glossy  
ceramic marble



Venetian glossy ceramic

### Dimensions

Dimensions

### Volumetric Details

**Weight** 7,5 Kg  
**Volume** 0,15 mc  
**Package** 1

Image not found or type unknown

	A (cm) (inch)	B (cm) (inch)	C (cm) (inch)
<b>H43 (cm)</b> (inch)	43 16.9	42 16.5	40 15.7
<b>H63 (cm)</b> (inch)	63 24.8	45 17.7	40 15.7
<b>H73 (cm)</b> (inch)	73 28.7	47 18.5	42 16.5

## Downloads

- 3D Autocad Apelle Chic H43 (zip) - <https://www.midj.com/images/uploads/resources/3d-midj-apelle-chic-h43-autocad.zip>
- 3ds Apelle Chic H43 (zip) - <https://www.midj.com/images/uploads/resources/3ds-midj-apelle-chic-h43.zip>
- 3D pCon Planner Apelle Chic H43 (zip) - <https://www.midj.com/images/uploads/resources/3d-midj-apelle-chic-h43-pcon.zip>
- 3D SketchUp Apelle Chic H43 (zip) - <https://www.midj.com/images/uploads/resources/3d-midj-apelle-chic-h43-sketchup.zip>
- 3D obj Apelle Chic H43 (zip) - <https://www.midj.com/images/uploads/resources/3d-midj-apelle-chic-h43-obj.zip>
- 3D Autocad Apelle Chic H63 (zip) - <https://www.midj.com/images/uploads/resources/3d-midj-apelle-chic-h63-autocad.zip>
- 3ds Apelle Chic H63 (zip) - <https://www.midj.com/images/uploads/resources/3ds-midj-apelle-chic-h63.zip>
- 3D pCon Planner Apelle Chic H63 (zip) - <https://www.midj.com/images/uploads/resources/3d-midj-apelle-chic-h63-pcon.zip>
- 3D SketchUp Apelle Chic H63 (zip) - <https://www.midj.com/images/uploads/resources/3d-midj-apelle-chic-h63-sketchup.zip>
- 3D obj Apelle Chic H63 (zip) - <https://www.midj.com/images/uploads/resources/3d-midj-apelle-chic-h63-obj.zip>
- 3D Autocad Apelle Chic H73 (zip) - <https://www.midj.com/images/uploads/resources/3d-midj-apelle-chic-h73-autocad.zip>
- 3ds Apelle Chic H73 (zip) - <https://www.midj.com/images/uploads/resources/3ds-midj-apelle-chic-h73.zip>
- 3D pCon Planner Apelle Chic H73 (zip) - <https://www.midj.com/images/uploads/resources/3d-midj-apelle-chic-h73-pcon.zip>
- 3D SketchUp Apelle Chic H73 (zip) - <https://www.midj.com/images/uploads/resources/3d-midj-apelle-chic-h73-sketchup.zip>
- 3D obj Apelle Chic H73 (zip) - <https://www.midj.com/images/uploads/resources/3d-midj-apelle-chic-h73-obj.zip>

## Materials Certifications

**Hide**

**FIRE RESISTANCE:**  
Technical Bulletin 117/00 sez E part. 1  
EN 1021 parte 1/94, parte 2/94  
BS 5852/90

**PROPRIETIES AND ADVANTAGES**  
The hide is a hygienic and very practical product: it resists to wear, it's impermeable to water but, at the same time, the hide wicks air and sweat. The hide is obtained from the skin of bovines breeds and slaughtered for food purposes and subsequently treated with chromium salts.

**CLEANING INSTRUCTIONS**  
Use only a damp, non abrasive cloth; do not use products containing solvents or alcohol that may damage the surface. It is advisable to test an invisible area of the product before cleaning it all. For good

preservation of the product purchased, it is unadvisable to expose it to direct sunlight that may alter its features and colours. Any surface imperfections are natural features of hide and guarantee that it is an original product.

## Materials Certifications

### Tuscan Hide

Tuscan Hide does not fear to get aged since the oldest it gets the more unique it becomes.

It is a material deriving from animal's leather which suffer a process called "vegetable tanning" with natural tannins and with the help of some products biologically compatible whether for the dyeing or for the finishing.

Any possible imperfection, sign, scar, stain of the Tuscan hide surface are a natural characteristics which guarantees its originality.