

Sintesy Bistrot Table

Sintesy bistro base available in lacquered steel.

Top sizes: ø70, ø80, ø90, 60x60, 70x70, 75x75, 80x80.



Colors and Materials

Structure



White Steel



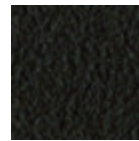
Black Steel



Sand Steel

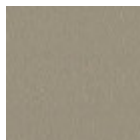


Grafite Steel

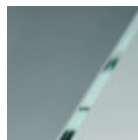


Brown Steel

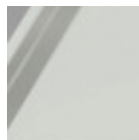
Coating



Melamine
8 Colors



Transparent Glass



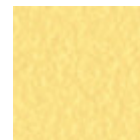
Extraclear Glossy
White Glass



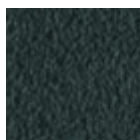
White Steel



Sand Steel



Pastel Yellow Steel



Grafite Steel



Black Steel



Light blue steel



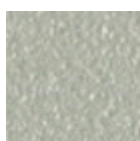
Ocean Blue Steel



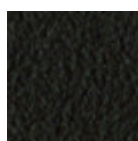
Bronze Steel



Fango Steel



Light Grey Steel



Brown Steel



Ocher Steel



Facepowder Pink
Steel



Red steel



Sage Green Steel



White hpl black core



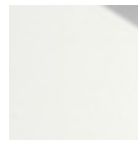
Black hpl



Hpl Cemento



Hpl Corten



White hpl white core

Dimensions

Dimensions

Volumetric Details

Weight 14.5 Kg

Volume 0.23 mc

Package 2

Image not found or type unknown

	A (cm) <small>(inch)</small>	B (cm) <small>(inch)</small>	C (cm) <small>(inch)</small>
Sintesy (cm) <small>(inch)</small>	75 29.5	51 20.1	51 20.1