

Trampoliere H107 Bistrot Table

design Roberto Paoli, 2013

Table with 3-pointed base in lacquered or chromed steel. The lacquered version can be used outdoors.

Maximum tray size 80x80 cm (31.5x31.5 in) or ø90 cm (35.4 in).



Colors and Materials

Structure



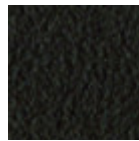
Chrome



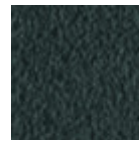
White Steel



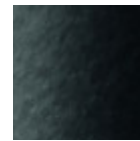
Sand Steel



Brown Steel



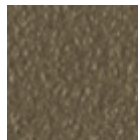
Grafite Steel



Black Steel



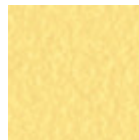
Facepowder Pink Steel



Fango Steel



Bronze Steel



Pastel Yellow Steel



Ocher Steel



Red steel



Sage Green Steel

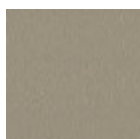


Light blue steel

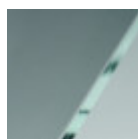


Ocean Blue Steel

Coating



Melamine
8 Colors



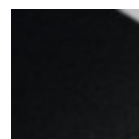
Transparent Glass



Extra clear glossy
white glass



White hpl black core



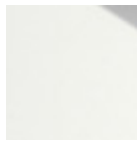
Black hpl



Hpl Cemento



Hpl Corten



White hpl white core

Dimensions

Dimensions

Volumetric Details

Weight 11.5 Kg

Volume 0.27 mc

Package 2

Image not found or type unknown

| | A | B | C |
|--------------------|-------------|-------------|-------------|
| | (cm) | (cm) | (cm) |
| | (inch) | (inch) | (inch) |
| Trampoliere | 107 | 50 | 50 |
| (cm) | 42.1 | 19.7 | 19.7 |
| (inch) | | | |