

Trampoliere H34 ø70 Coffee Table

design Roberto Paoli, 2013

Coffee table with three-spoke base in painted steel. Top in melamine or HPL.



Colors and Materials

Structure



White Steel



Black Steel



Sand Steel



Brown Steel



Grafite Steel



Pastel Yellow Steel



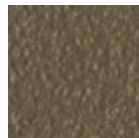
Light blue steel



Ocean Blue Steel



Bronze Steel



Fango Steel



Light Grey Steel



Ocher Steel



Facepowder Pink
Steel

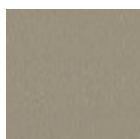


Red steel



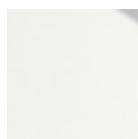
Sage Green Steel

Coating

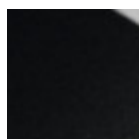


Melamine

8 Colors



White hpl black core



Black hpl



Hpl Cemento



Hpl Corten



White hpl white core

Dimensions

Volumetric Details

Weight 15.5 Kg

Volume 0.2 mc

Package 2

Image not found or type unknown

	A	B	C
	(cm)	(cm)	(cm)
	(inch)	(inch)	(inch)
Trampoliere			
H34 (cm)	34	70	70
(inch)	13.4	27.6	27.6